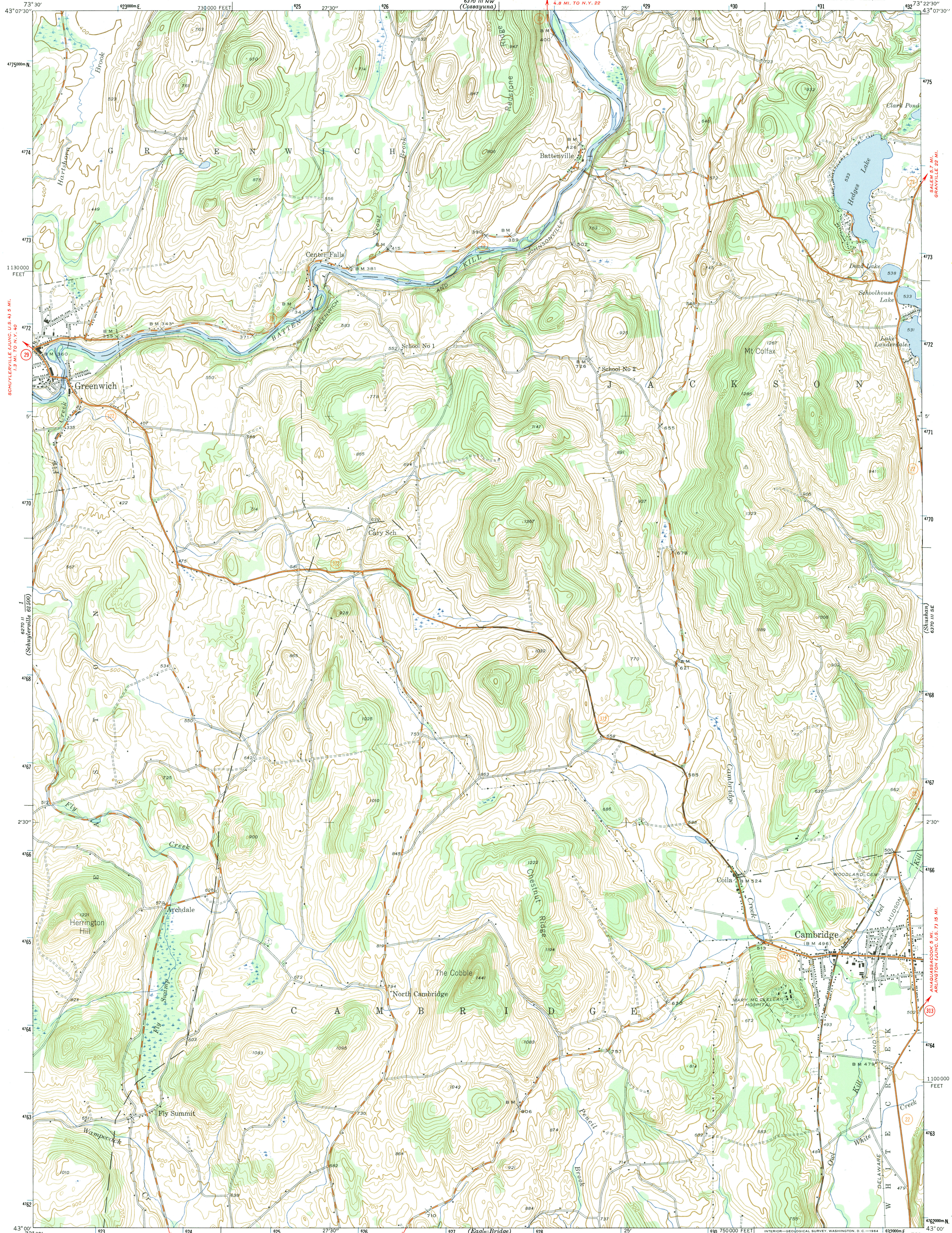


6270 II
(Schuylerville)
62500

6370 III NE
(Salem)



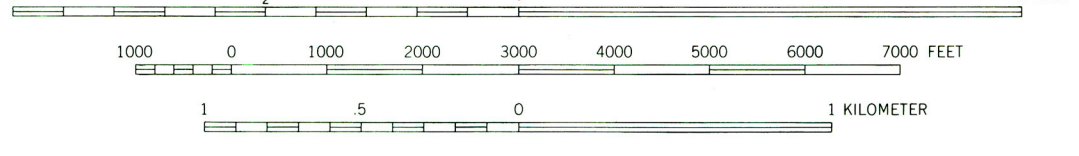
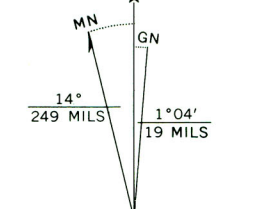
Mapped by the Geological Survey
1944

SCALE 1:24000
CENTER CAMBRIDGE 0.6 MI.
SOUTH CAMBRIDGE 3.7 MI.
(Eagle Bridge)
6369 IV NW

Polyconic projection. 1927 North American datum

10000 foot grid based on New York (East)
rectangular coordinate system
1000-meter Universal Transverse Mercator grid ticks,
zone 18, shown in blue

ROAD CLASSIFICATION
Heavy-duty 4 LANE 6 LANE Light-duty
Medium-duty 4 LANE 6 LANE Unimproved dirt
U.S. Route State Route



Contour interval 20 feet
Datum is mean sea level

FOR SALE BY U. S. GEOLOGICAL SURVEY, WASHINGTON 25, D. C.
A FOLDER DESCRIBING TOPOGRAPHIC MAPS AND SYMBOLS IS AVAILABLE ON REQUEST

CAMBRIDGE, N. Y.

N4300-W7322.5/7.5

1944

AMS 6370 III SW-SERIES V821

