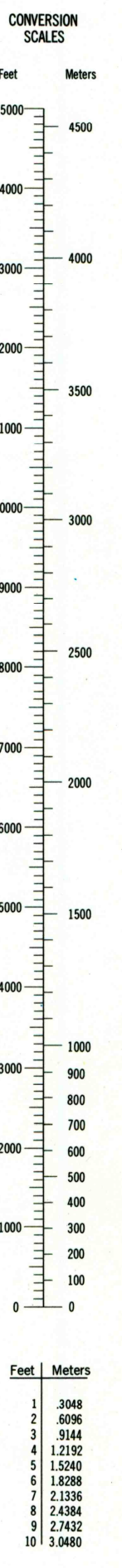
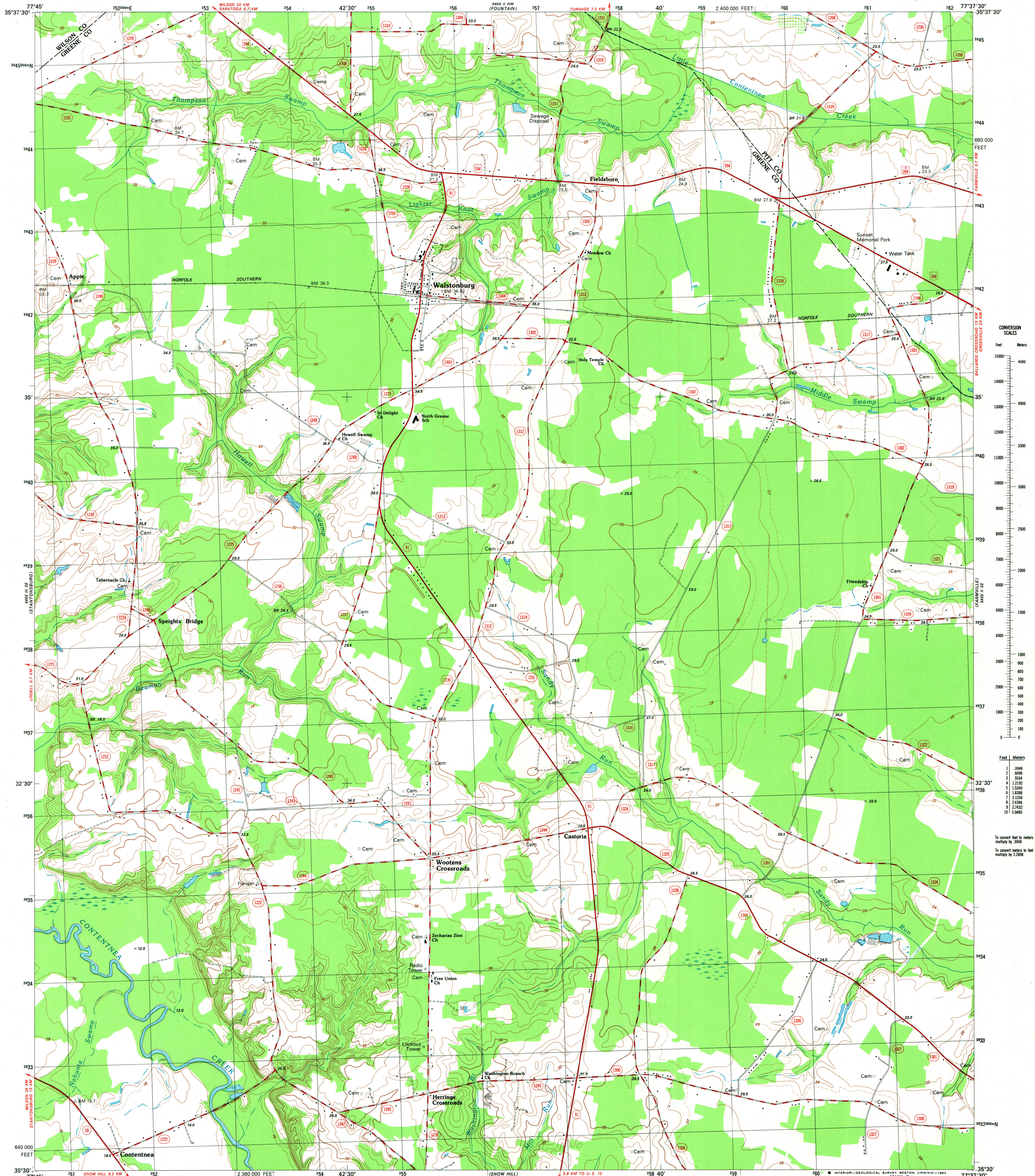
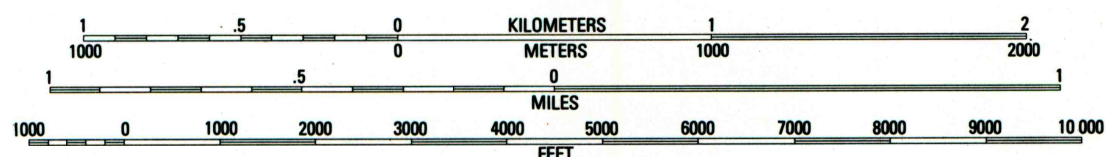
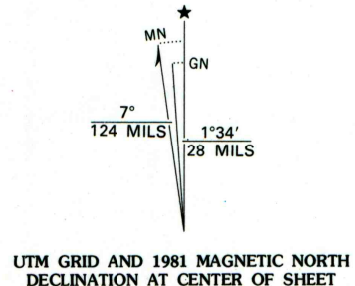


UNITED STATES
DEPARTMENT OF THE INTERIOR
GEOLOGICAL SURVEY

WALSTONBURG QUADRANGLE
NORTH CAROLINA
7.5 MINUTE SERIES (TOPOGRAPHIC)
SW/4 FALKLAND 15' QUADRANGLE

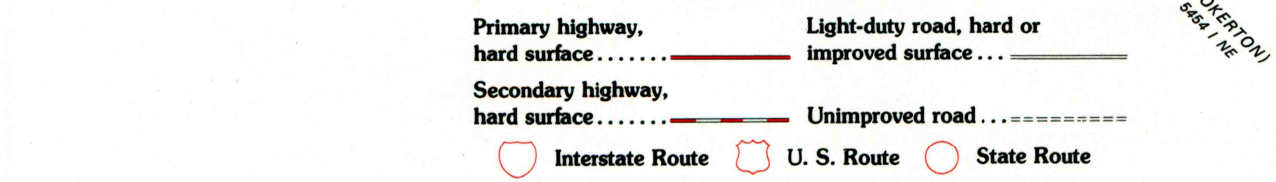


Mapped, edited, and published by the Geological Survey
Control by USGS, NOS/NOAA, and North Carolina Geodetic Survey
Topography by photogrammetric methods from aerial photographs
taken 1977. Field checked 1978. Map edited 1981
Projection and 10,000-foot grid ticks: North Carolina coordinate
system (Lambert conformal conic)
1000-meter Universal Transverse Mercator grid, zone 18
1927 North American Datum
To place on the predicted North American Datum 1983
move the projection lines 12 meters south and
26 meters west as shown by dashed corner ticks
Fine red dashed lines indicate selected fence and field lines where
generally visible on aerial photographs. This information is unchecked



CONTOUR INTERVAL 2 METERS
SUPPLEMENTARY CONTOUR INTERVAL 1 METER
DASHED SUPPLEMENTARY CONTOURS ARE APPROXIMATE
NATIONAL GEODETIC DATUM OF 1929
CONTROL ELEVATIONS SHOWN TO THE NEAREST 0.1 METER
OTHER ELEVATIONS SHOWN TO THE NEAREST 0.5 METER

THIS MAP COMPLIES WITH NATIONAL MAP ACCURACY STANDARDS
FOR SALE BY U. S. GEOLOGICAL SURVEY, RESTON, VIRGINIA 22092
A FOLDER DESCRIBING TOPOGRAPHIC MAPS AND SYMBOLS IS AVAILABLE ON REQUEST



WALSTONBURG, N. C.
SW/4 FALKLAND 15' QUADRANGLE
N3530-W7737.5/7.5
1981
DMA 5455 II SW-SERIES 9842