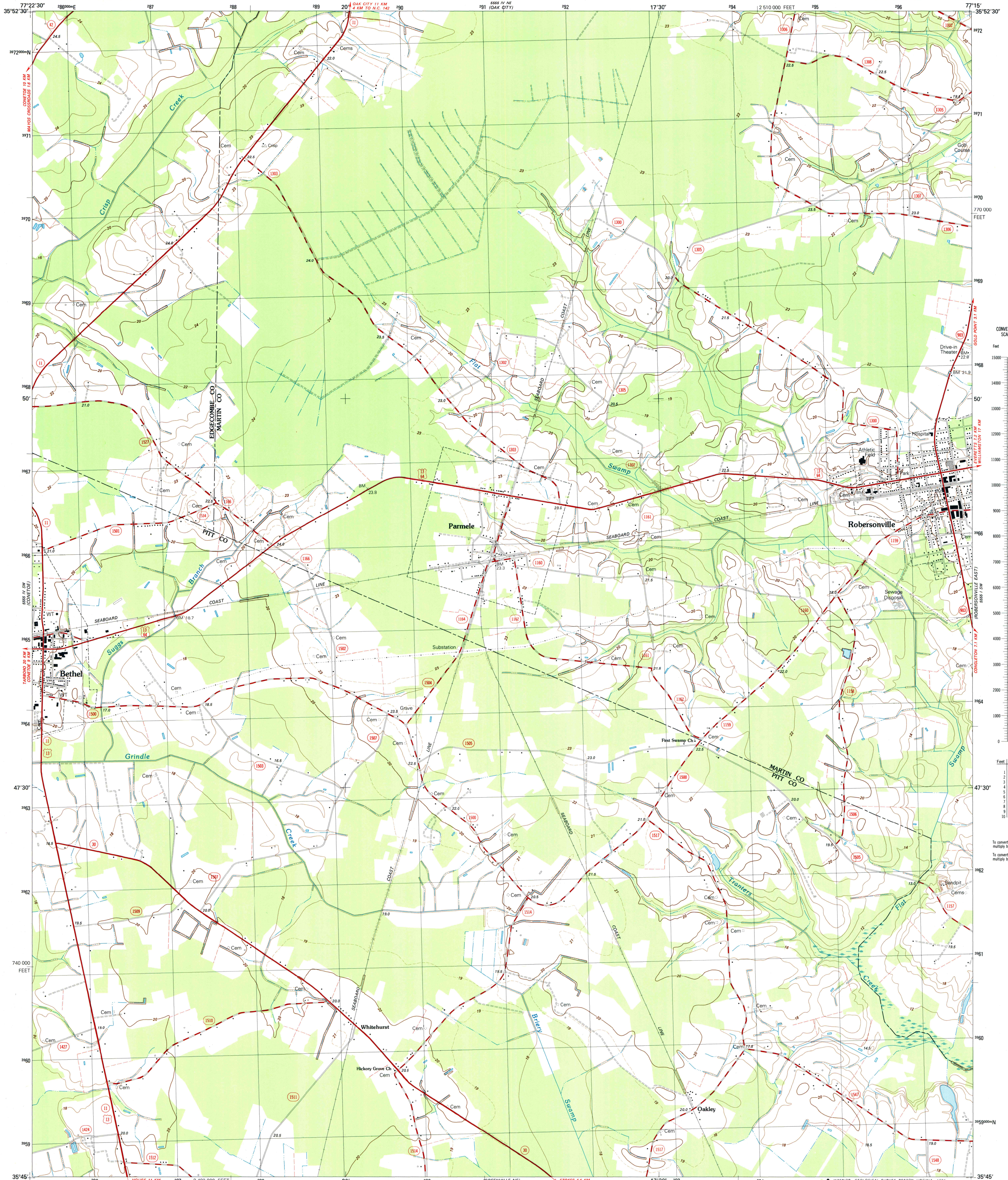


**ROBERSONVILLE WEST QUADRANGLE
NORTH CAROLINA
7.5 MINUTE SERIES (TOPOGRAPHIC)**
SE4 PARMELE 15' QUADRANGLE

UNITED STATES
DEPARTMENT OF THE INTERIOR
GEOLOGICAL SURVEY

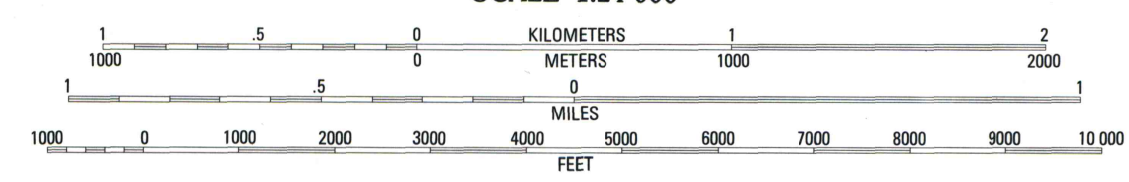
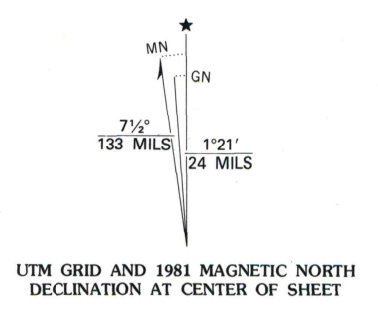


CONVERSION SCALES

Feet	Meters
15000	4500
14000	4200
13000	3900
12000	3600
11000	3300
10000	3000
9000	2700
8000	2400
7000	2100
6000	1800
5000	1500
4000	1200
3000	900
2000	600
1000	300
0	0

To convert feet to meters multiply by 0.3048
To convert meters to feet multiply by 3.2808

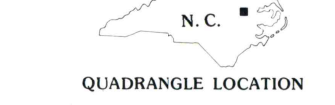
Mapped, edited, and published by the Geological Survey
Control by USGS, NOS/NOAA, and USCE
Topography by photogrammetric methods from aerial photographs taken 1977. Field checked 1978. Map edited 1981
Projection and 10,000-foot grid ticks: North Carolina coordinate system (Lambert conformal conic)
1000-meter Universal Transverse Mercator grid, zone 18 1927 North American Datum
To place on the predicted North American Datum 1983 move the projection lines 12 meters south and 27 meters west as shown by dashed corner ticks
Fine red dashed lines indicate selected fence and field lines where generally visible on aerial photographs. This information is unchecked



CONTOUR INTERVAL 2 METERS
SUPPLEMENTARY CONTOUR INTERVAL 1 METER
DASHED SUPPLEMENTARY CONTOURS ARE APPROXIMATE
NATIONAL GEODETIC VERTICAL DATUM OF 1929
CONTROL ELEVATIONS SHOWN TO THE NEAREST 0.1 METER
OTHER ELEVATIONS SHOWN TO THE NEAREST 0.5 METER

ROAD CLASSIFICATION

Primary highway, hard surface	Light-duty road, hard or improved surface
Secondary highway, hard surface	Unimproved road
Interstate Route	U. S. Route
	State Route



ROBERSONVILLE WEST, N. C.
SE4 PARMELE 15' QUADRANGLE
N3545-W7715/7.5
1981
DMA 5555 IV SE-SERIES V842

THIS MAP COMPLIES WITH NATIONAL MAP ACCURACY STANDARDS
FOR SALE BY U. S. GEOLOGICAL SURVEY
DENVER, COLORADO 80225, OR RESTON, VIRGINIA 22092
A FOLDER DESCRIBING TOPOGRAPHIC MAPS AND SYMBOLS IS AVAILABLE ON REQUEST