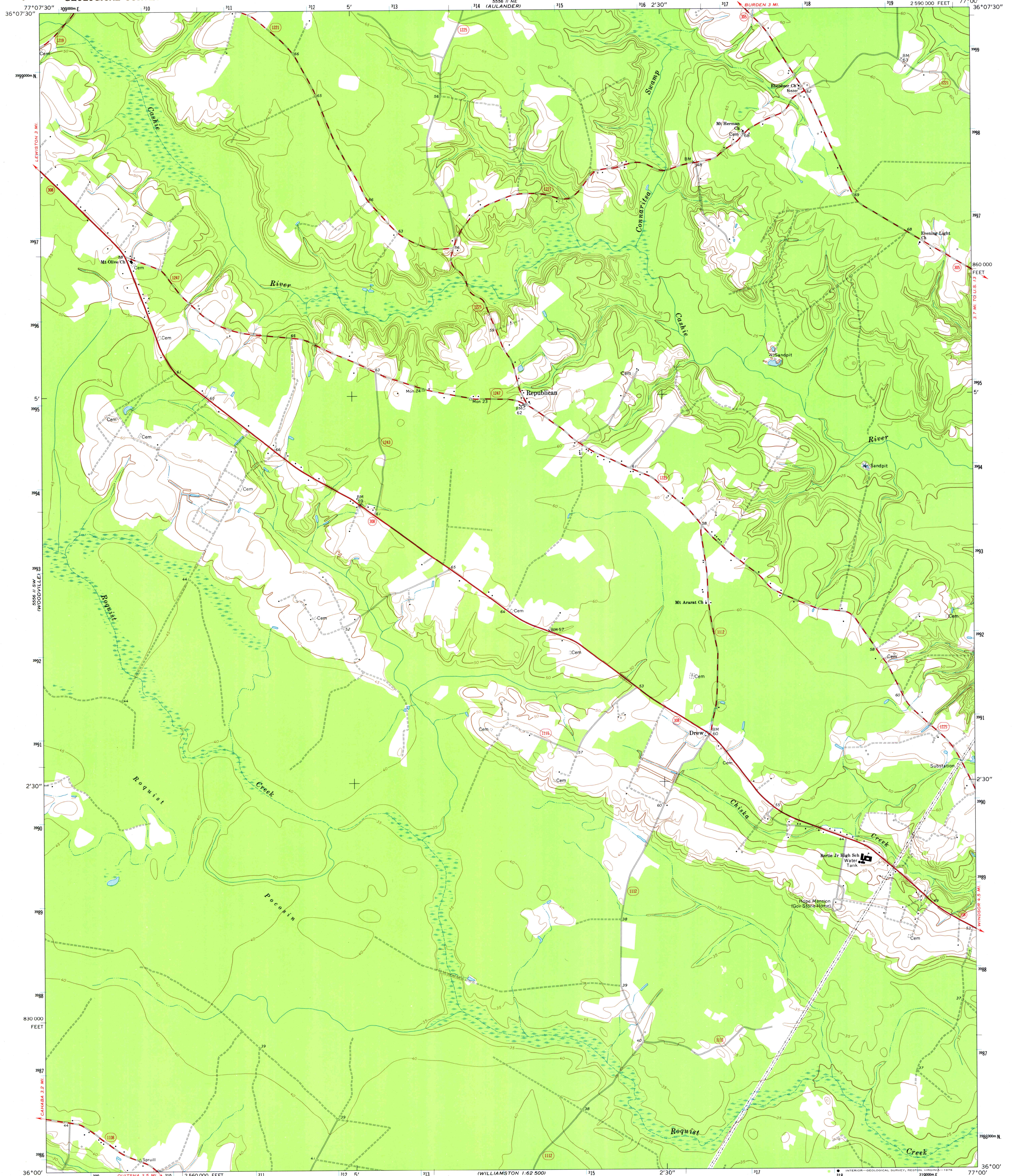


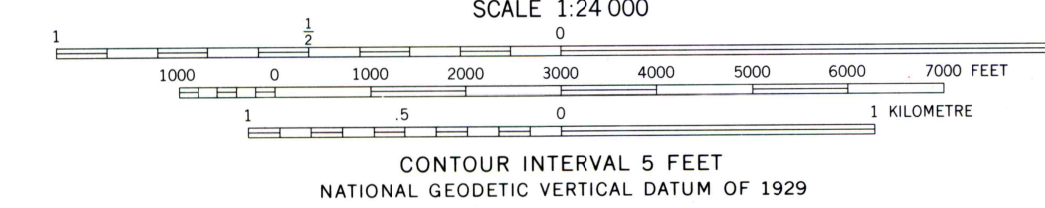
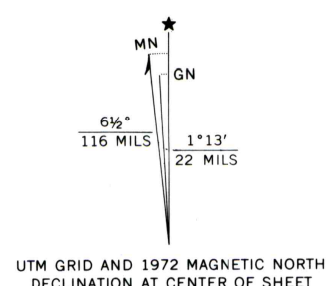
5556 II NE (AULANDER)

UNITED STATES  
DEPARTMENT OF THE INTERIOR  
GEOLOGICAL SURVEY

REPUBLICAN QUADRANGLE  
NORTH CAROLINA—BERTIE CO.  
7.5 MINUTE SERIES (TOPOGRAPHIC)



Mapped, edited, and published by the Geological Survey  
Control by USGS, NOS/NOAA, and USCE  
Topography by photogrammetric methods from aerial photographs taken 1972. Field checked 1972  
Projection and 10,000-foot grid ticks: North Carolina coordinate system (Lambert conformal conic)  
1000-metre Universal Transverse Mercator grid ticks, zone 18, shown in blue. 1927 North American datum



ROAD CLASSIFICATION

Primary highway, hard surface	Light-duty road, hard or improved surface
Secondary highway, hard surface	Unimproved road
Interstate Route	U. S. Route
	State Route

THIS MAP COMPLIES WITH NATIONAL MAP ACCURACY STANDARDS  
FOR SALE BY U. S. GEOLOGICAL SURVEY, RESTON, VIRGINIA 22092  
A FOLDER DESCRIBING TOPOGRAPHIC MAPS AND SYMBOLS IS AVAILABLE ON REQUEST

REPUBLICAN, N. C.  
N3600—W7700/7.5

1972  
AMS 5556 II SE—SERIES V842