

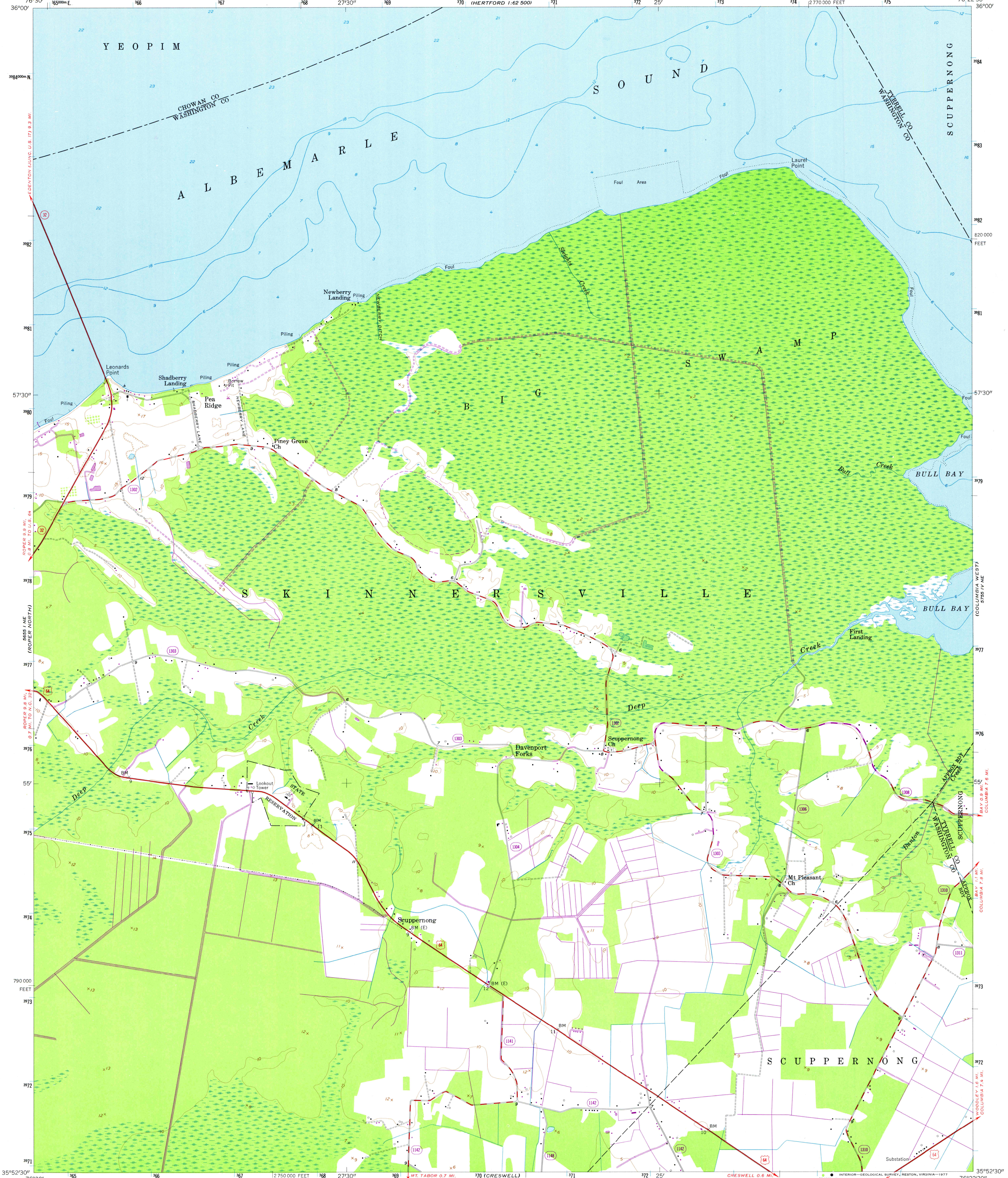
Sheet II
EDWARDS
1:62,500

UNITED STATES
DEPARTMENT OF THE INTERIOR
GEOLOGICAL SURVEY

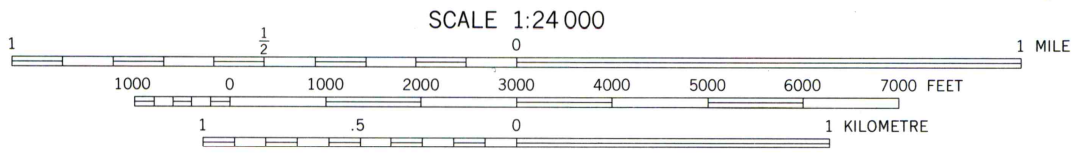
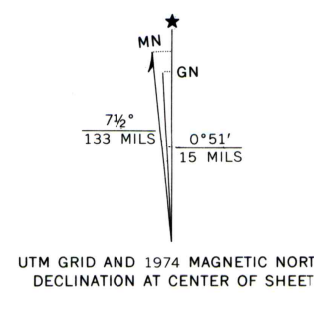
UNITED STATES
DEPARTMENT OF COMMERCE
COAST AND GEODETIC SURVEY

LEONARDS POINT QUADRANGLE
NORTH CAROLINA
7.5 MINUTE SERIES (TOPOGRAPHIC)

Sheet III
EDWARDS
1:62,500



Mapped by U. S. Coast and Geodetic Survey
Edited and published by the Geological Survey
Control by USC&GS (C) and USCE (E)
Culture and drainage in part compiled from aerial
photographs taken 1951. Topography by planetable
surveys 1951. Field check 1954
Hydrography from surveys dated 1954 and
supplementary surveys
Polyconic projection. 1927 North American datum
10,000-foot grid based on North Carolina
coordinate system
Unchecked elevations are shown in brown
1000-metre Universal Transverse Mercator grid ticks,
zone 16, shown in blue



CONTOUR INTERVAL 5 FEET
NATIONAL GEODETIC VERTICAL DATUM OF 1929

DEPTH CURVES AND SOUNDINGS IN FEET—DATUM IS MEAN LOW WATER
SHORELINE SHOWN REPRESENTS THE APPROXIMATE LINE OF MEAN HIGH WATER
THE MEAN RANGE OF TIDE IS LESS THAN 0.5 FOOT

THIS MAP COMPLIES WITH NATIONAL MAP ACCURACY STANDARDS
FOR SALE BY U. S. GEOLOGICAL SURVEY, RESTON, VIRGINIA 22092
A FOLDER DESCRIBING TOPOGRAPHIC MAPS AND SYMBOLS IS AVAILABLE ON REQUEST



ROAD CLASSIFICATION

Heavy-duty	Light-duty
Medium-duty	Unimproved dirt
U. S. Route	State Route

LEONARDS POINT, N. C.
N 3552.5—W 7622.5/7.5

1954
PHOTOREVISED 1974
AMS 5755 IV NW—SERIES V842

Revisions shown in purple compiled by the Geological Survey
from aerial photographs taken 1974. This information not field checked
Short dashed blue lines indicate elliptical bay outlines
visible on aerial photographs