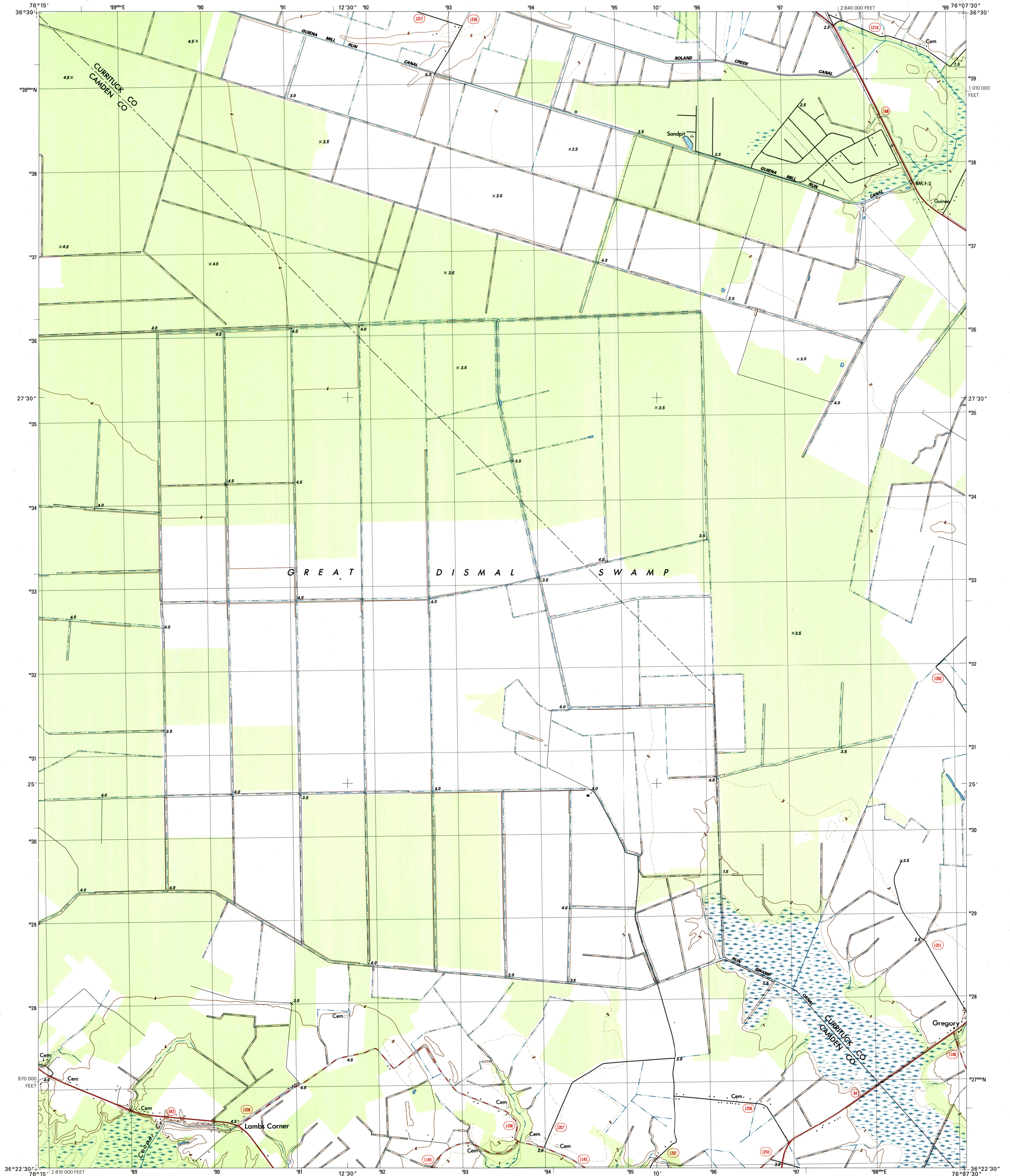




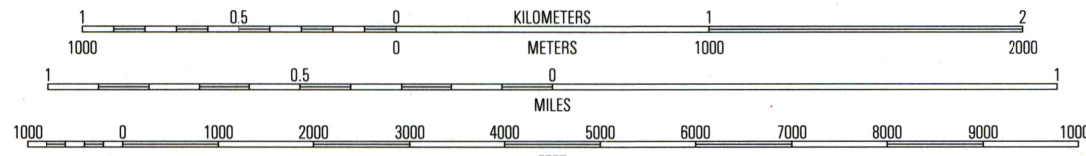
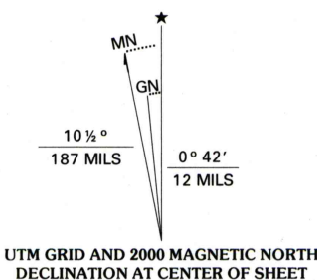
U.S. DEPARTMENT OF THE INTERIOR
U.S. GEOLOGICAL SURVEY

STATE OF NORTH CAROLINA
DEPARTMENT OF ENVIRONMENT AND NATURAL RESOURCES
DIVISION OF LAND RESOURCES
NORTH CAROLINA GEOLOGICAL SURVEY

LAMBS CORNER QUADRANGLE
NORTH CAROLINA
7.5-MINUTE SERIES (TOPOGRAPHIC)



Produced by the United States Geological Survey
Derived from imagery taken 1975 and other sources. Photoinspected using imagery taken 1997; no major culture or drainage changes observed. Survey control current as of 1977. Boundaries verified 2000.
North American Datum of 1927 (NAD 27). Projection and 10 000-foot ticks: North Carolina coordinate system (Lambert conformal conic).
1000-meter Universal Transverse Mercator grid, zone 18
North American Datum of 1983 (NAD 83) is shown by dashed corner ticks. The values of the shift between NAD 27 and NAD 83 for 7.5-minute intersections are obtainable from National Geodetic Survey NADCON software



CONTOUR INTERVAL 2 METERS
SUPPLEMENTARY CONTOUR INTERVAL 1 METER
DASHED SUPPLEMENTARY CONTOURS ARE APPROXIMATE
NATIONAL GEODETTIC VERTICAL DATUM OF 1929
TO CONVERT FROM METERS TO FEET, MULTIPLY BY 3.2808
CONTROL ELEVATIONS SHOWN TO THE NEAREST 0.1 METER
OTHER ELEVATIONS SHOWN TO THE NEAREST 0.5 METER

THIS MAP COMPLIES WITH NATIONAL MAP ACCURACY STANDARDS
FOR SALE BY U.S. GEOLOGICAL SURVEY, P.O. BOX 25286, DENVER, COLORADO 80225
A FOLDER DESCRIBING TOPOGRAPHIC MAPS AND SYMBOLS IS AVAILABLE ON REQUEST



QUADRANGLE LOCATION

ROAD CLASSIFICATION
Primary highway
hard surface
Secondary highway
hard surface
Light-duty road, hard or
improved surface
Unimproved road
Interstate Route U.S. Route State Route

1	2	3	1 Lake Drummond Se
4	5	6	2 Moyock
6	7	8	3 Creeds
			4 South Mills
			5 Currituck
			6 Pasquotank
			7 Elizabeth City
			8 Shiloh

ADJOINING 7.5' QUADRANGLE NAMES

LAMBS CORNER, NC
1997

NIMA 5756 1 NW-SERIES V8420

