

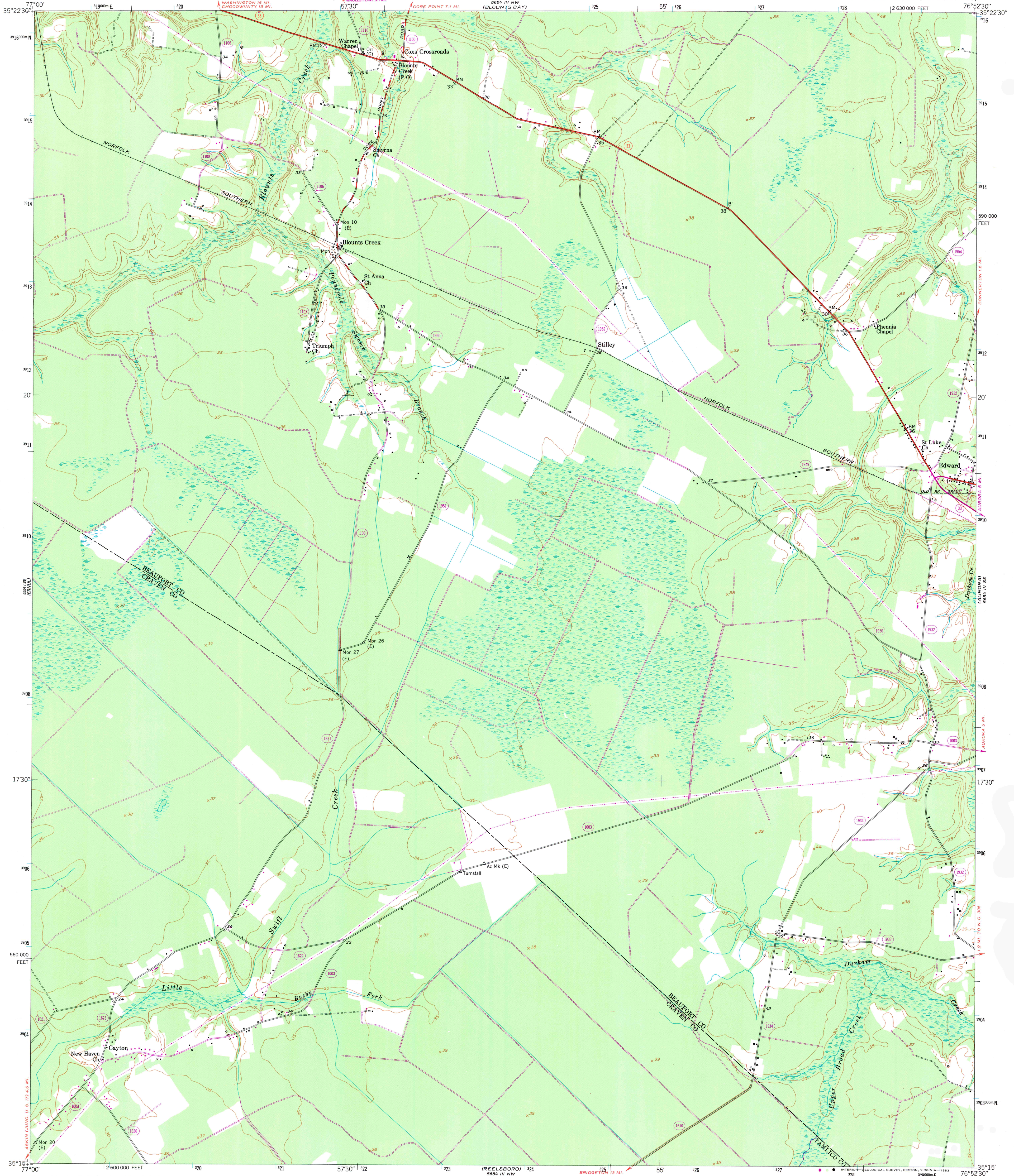
5654 IV NW  
(BLOUNTS BAY)

UNITED STATES  
DEPARTMENT OF THE INTERIOR  
GEOLOGICAL SURVEY

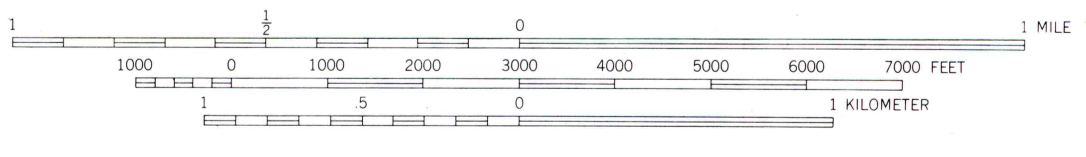
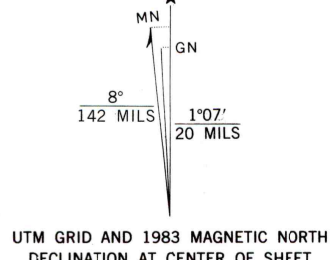
UNITED STATES  
DEPARTMENT OF COMMERCE  
COAST AND GEODETIC SURVEY

EDWARD QUADRANGLE  
NORTH CAROLINA  
7.5 MINUTE SERIES (TOPOGRAPHIC)

5654 IV NE  
(EARTH)



Maped by the U. S. Coast and Geodetic Survey  
Edited and published by the Geological Survey  
Control by NOS/NOAA (C) and USCE (E)  
Culture and drainage in part compiled from  
aerial photographs taken 1948  
Topography by planetable surveys 1948. Field checked 1950  
Polyconic projection. 10,000-foot grid ticks based on  
North Carolina coordinate system. 1000-meter  
Universal Transverse Mercator grid ticks, zone 18,  
shown in blue  
1927 North American Datum  
To place on the predicted North American Datum  
1983 move the projection lines 12 meters south  
and 28 meters west as shown by dashed corner ticks  
Revisions shown in purple and woodland compiled by  
the Geological Survey in cooperation with State of North  
Carolina agencies from aerial photographs taken  
1980 and other sources  
This information not field checked. Map edited 1983



CONTOUR INTERVAL 5 FEET  
NATIONAL GEODETIC VERTICAL DATUM OF 1929

THIS MAP COMPLIES WITH NATIONAL MAP ACCURACY STANDARDS  
FOR SALE BY U. S. GEOLOGICAL SURVEY, RESTON, VIRGINIA 22092  
A FOLDER DESCRIBING TOPOGRAPHIC MAPS AND SYMBOLS IS AVAILABLE ON REQUEST



ROAD CLASSIFICATION	
Heavy-duty	4 LANE 16 LANE
Medium-duty	4 LANE 16 LANE
Light-duty	Unimproved dirt
U. S. Route	State Route

EDWARD, N. C.  
35076-C8-TF-024

1950  
PHOTOREVISED 1983  
DMA 5654 IV SW - SERIES Y842