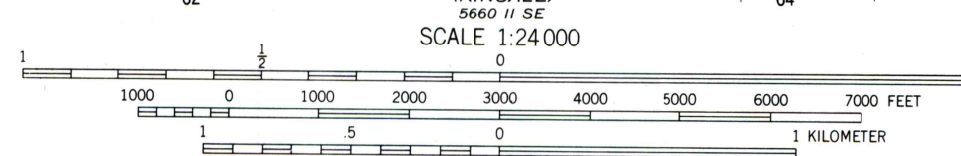
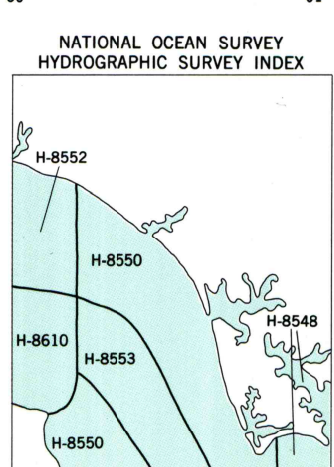


Mapped, edited, and published by the Geological Survey and the National Ocean Survey in cooperation with Commonwealth of Virginia agencies
Control by USGS and NOS/NOAA
Topography by photogrammetric methods from aerial photographs taken 1967. Field checked 1968
Bathymetry compiled by the National Ocean Survey from tide-coordinated hydrographic surveys. This information is not intended for navigational purposes
Mean low water (dotted) line and mean high water (heavy solid) line compiled by NOS from tide-coordinated photographs. Apparent shoreline (outer edge of vegetation) shown by light solid line
Polyconic projection. 10,000-foot grid ticks based on Maryland coordinate system and Virginia coordinate system, north zone
1000-meter Universal Transverse Mercator grid, zone 18
1927 North American Datum
To place on the predicted North American Datum 1983 move the projection lines 9 meters south and 28 meters west as shown by dashed corner ticks
Revisions shown in purple compiled in cooperation with Commonwealth of Virginia agencies from aerial photographs taken 1978 and other sources. This information not field checked. Map edited 1980



CONTOUR INTERVAL 10 FEET
DASHED LINES REPRESENT 5-FOOT CONTOURS
NATIONAL GEODETIC VERTICAL DATUM OF 1929
BATHYMETRIC CONTOUR INTERVAL 1 METER
WITH SUPPLEMENTARY 0.5 METER CONTOURS
DATUM IS MEAN LOW WATER
THE RELATIONSHIP BETWEEN THE TWO DATUMS IS VARIABLE
THE MEAN RANGE OF TIDE IS APPROXIMATELY 0.4 METER

ROAD CLASSIFICATION
Secondary highway, all weather, Light duty road, all weather, hard surface
improved surface
Unimproved road, fair or dry weather
State Route



PINEY POINT, MD. - VA.
38076-B5-TF-024

1968
PHOTOREVISED 1980
BATHYMETRY ADDED 1982
DMA 5660 II NE-SERIES V835

HYDROGRAPHIC SURVEY INFORMATION

Survey Number	Survey Date	Survey Scale	Survey Line Spacing (Naut. Miles)
H-8548	1960	1:10,000	02-07
H-8550	1960	1:10,000	01-08
H-8552	1960	1:10,000	02-07
H-8553	1960	1:20,000	03-20
H-8610	1960-61	1:10,000	02-07

BASE MAP COMPLIES WITH NATIONAL MAP ACCURACY STANDARDS
BATHYMETRIC SURVEY DATA COMPLIES WITH INTERNATIONAL HYDROGRAPHIC ORGANIZATION (IHO) SPECIAL PUBLICATION 44 ACCURACY STANDARDS
AND/OR STANDARDS USED AT THE DATE OF THE SURVEY
FOR SALE BY U. S. GEOLOGICAL SURVEY, DENVER, COLORADO 80225, OR RESTON, VIRGINIA 22092
NATIONAL OCEAN SERVICE, ROCKVILLE, MARYLAND 20882
AND VIRGINIA DIVISION OF MINERAL RESOURCES, CHARLOTTESVILLE, VIRGINIA 22903
A FOLDER DESCRIBING TOPOGRAPHIC MAPS AND SYMBOLS IS AVAILABLE ON REQUEST

