

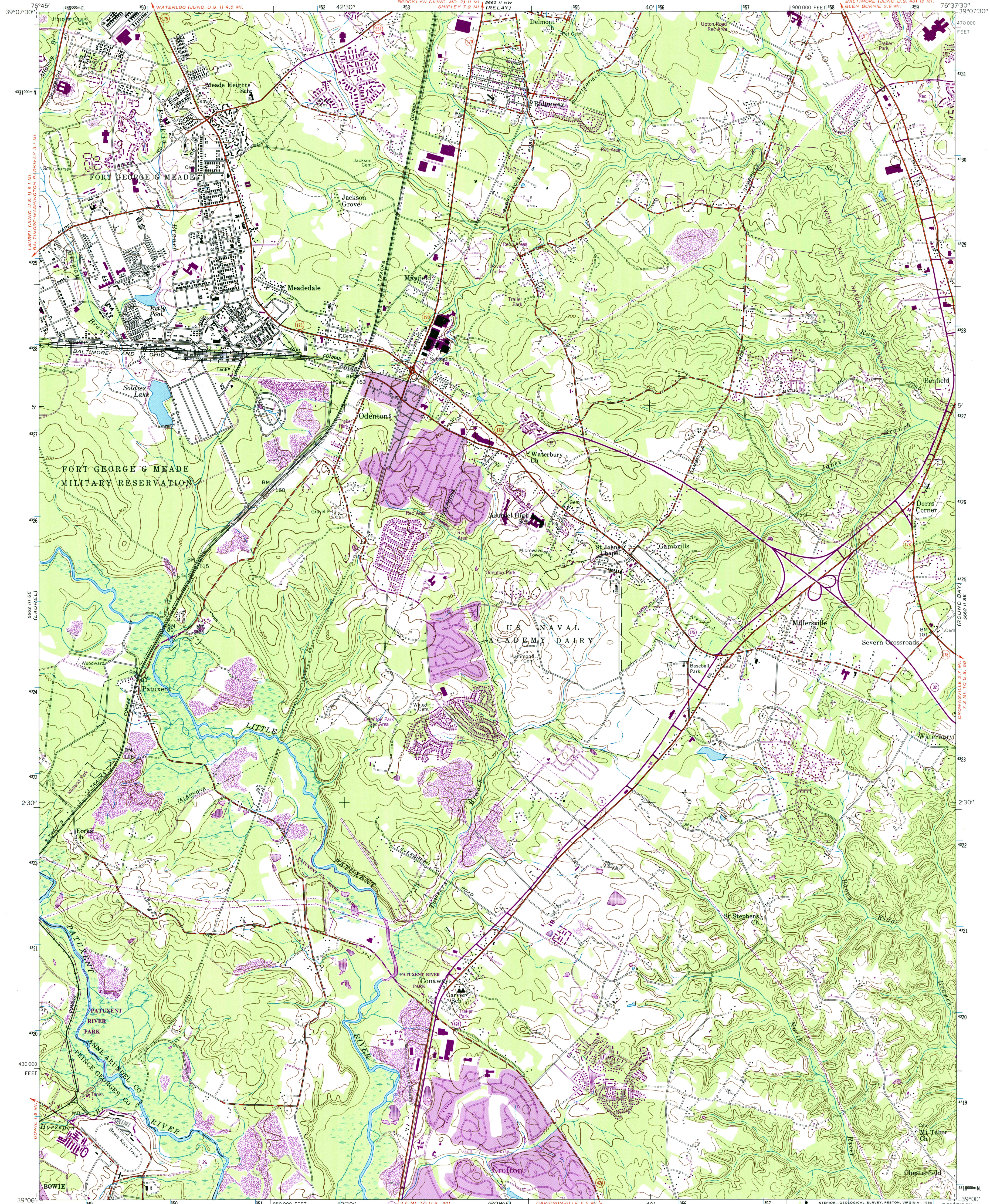
5662 II SW (S. 41/45E)

UNITED STATES  
DEPARTMENT OF THE INTERIOR  
GEOLOGICAL SURVEY

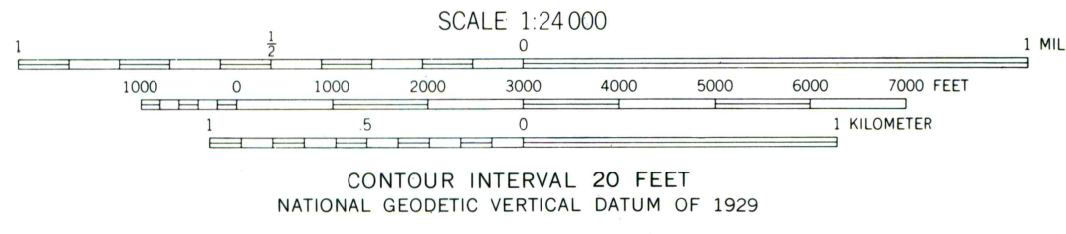
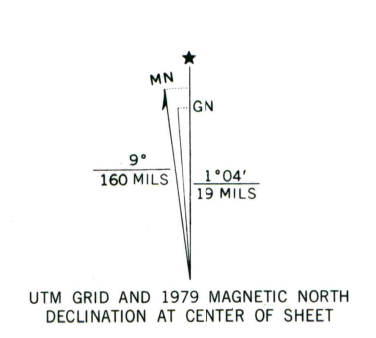
UNITED STATES  
DEPARTMENT OF THE ARMY  
CORPS OF ENGINEERS

ODENTON QUADRANGLE  
MARYLAND  
7.5 MINUTE SERIES (TOPOGRAPHIC)

5662 II SW (S. 41/45E)



Mapped by the Army Map Service  
Published for civil use by the Geological Survey  
Control by USGS, USC&GS, USCE, and SCS  
Topography from aerial photographs by photogrammetric methods and by planetable surveys 1943. Planimetric detail revised from aerial photographs taken 1955. Field check 1957  
Polyconic projection. 1927 North American datum  
10,000-foot grid based on Maryland coordinate system  
1000-meter Universal Transverse Mercator grid ticks, zone 18, shown in blue  
To place on the predicted North American Datum 1983  
move the projection lines 8 meters south and  
27 meters west as shown by dashed corner ticks  
There may be private inholdings within the boundaries of  
the National or State reservations shown on this map



ROAD CLASSIFICATION

Heavy-duty	Light-duty
Medium-duty	Unimproved dirt
State Route	



ODENTON, MD.  
N 3900—W 7637.5/7.5

1957  
PHOTOREVISED 1979  
AMS 5662 II SW—SERIES V833

FOR SALE BY U. S. GEOLOGICAL SURVEY, RESTON, VIRGINIA 22092  
A FOLDER DESCRIBING TOPOGRAPHIC MAPS AND SYMBOLS IS AVAILABLE ON REQUEST

Purple tint indicates extension of urban areas  
Revisions shown in purple compiled by the Geological Survey from aerial  
photographs taken 1977 and other source data. This information  
not field checked. Map edited 1979  
Boundary lines shown in purple compiled from latest  
information available from the controlling authority