

Mapped, edited, and published by the Geological Survey and the National Ocean Service in cooperation with the Commonwealth of Virginia agencies Control by USGS and NOS/NOAA

Topography by photogrammetric methods from aerial photographs taken 1967. Field checked 1968

Bathymetry compiled by the National Ocean Service from tide-coordinated hydrographic surveys. This information is not intended for navigational purposes

Mean low water (dotted) line and mean high water (heavy solid) line compiled by NOS tide-coordinated aerial photographs

Apparent shoreline (outer edge of vegetation) shown by light solid line

Polyconic projection. 1927 North American Datum

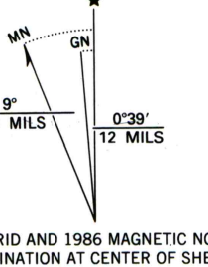
10,000-foot grids based on Virginia coordinate system, south zone, and Maryland coordinate system

1000-meter Universal Transverse Mercator grid ticks, zone 18, shown in blue

To place on the predicted North American Datum 1983, move the projection lines 9 meters south and 29 meters west as shown by dashed corner ticks

There may be private holdings within the boundaries of the National or State reservations shown on this map

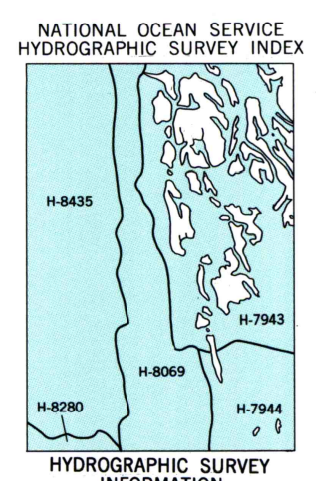
Revisions shown in purple compiled in cooperation with Commonwealth of Virginia agencies from aerial photographs taken 1981 and other source data. This information not field checked. Map edited 1986



SCALE 1:24,000

CONTOUR INTERVAL 5 FEET
NATIONAL GEODETIC VERTICAL DATUM OF 1929
BATHYMETRIC CONTOUR INTERVAL 1 METER WITH SUPPLEMENTARY 0.5 METER CONTOURS-DATUM IS MEAN LOW WATER
THE RELATIONSHIP BETWEEN THE TWO DATUMS IS VARIABLE

BASE MAP COMPLIES WITH NATIONAL MAP ACCURACY STANDARDS
BATHYMETRIC SURVEY DATA COMPLIES WITH INTERNATIONAL HYDROGRAPHIC ORGANIZATION (IHO) SPECIAL PUBLICATION 44 ACCURACY STANDARDS
AND/OR STANDARDS USED AT THE DATE OF THE SURVEY
FOR SALE BY U.S. GEOLOGICAL SURVEY
DENVER, COLORADO 80225, OR RESTON, VIRGINIA 22092
NATIONAL OCEAN SERVICE, ROCKVILLE, MARYLAND 20852
AND VIRGINIA DIVISION OF MINERAL RESOURCES, CHARLOTTESVILLE, VIRGINIA 22903
A FOLDER DESCRIBING TOPOGRAPHIC MAPS AND SYMBOLS IS AVAILABLE ON REQUEST



HYDROGRAPHIC SURVEY INFORMATION

SURVEY NUMBER	SURVEY DATE	SURVEY SCALE	SURVEY LINE SPACING (NAUT. MILES)
H-7943	1951	1:10,000	01-10
H-7944	1951	1:20,000	03-15
H-8069	1952	1:20,000	04-25
H-8435	1956	1:20,000	04-15

NOS CHART 1804 AUGUST 7, 1982 1:40,000

ROAD CLASSIFICATION
Light-duty road, all weather, improved surface

EWELL, MD.-VA.
37076-H1-TB-024

1968
PHOTOREVISED 1986
BATHYMETRY ADDED 1986
DMA 5759 1 NE-SERIES 9633