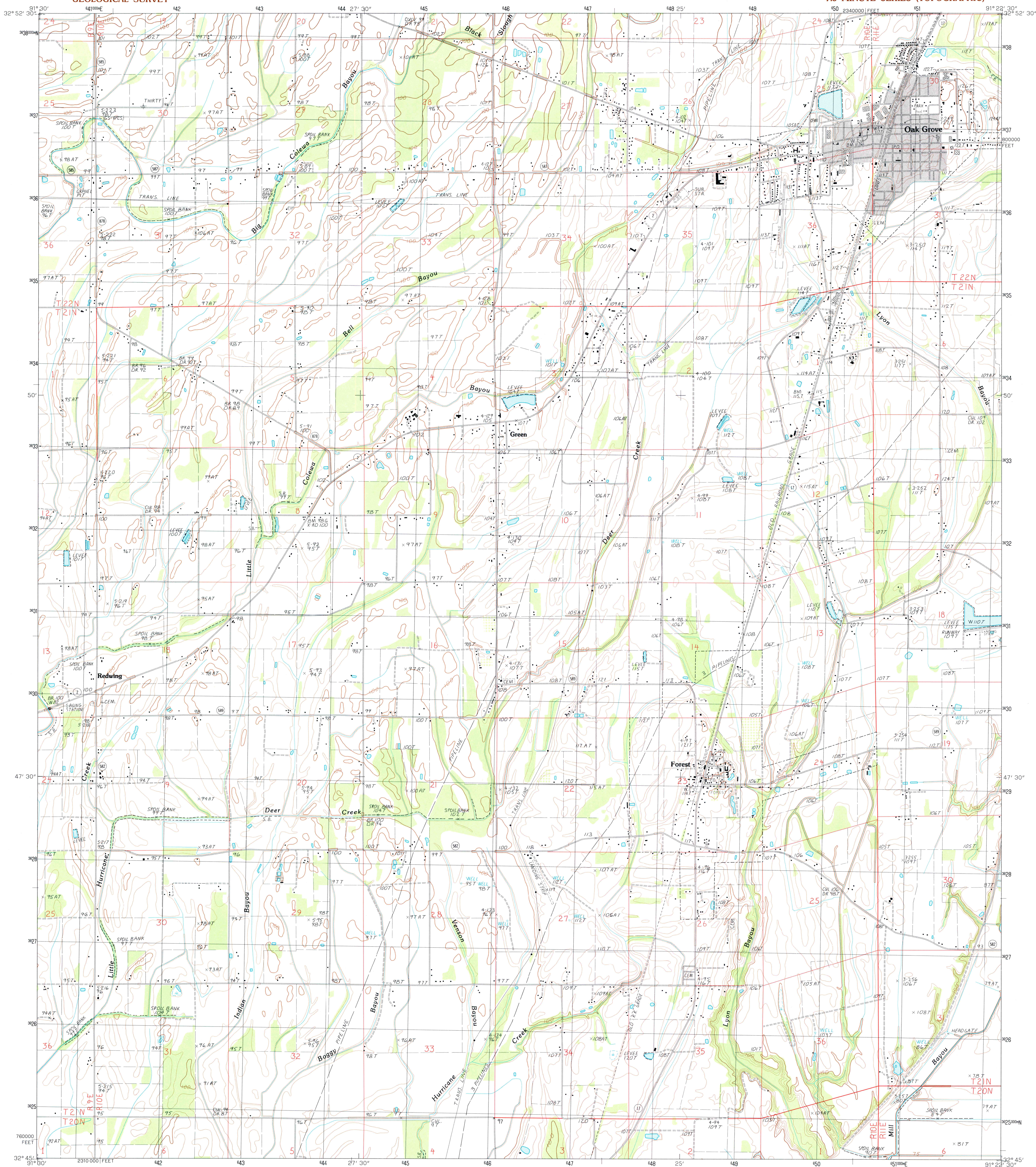


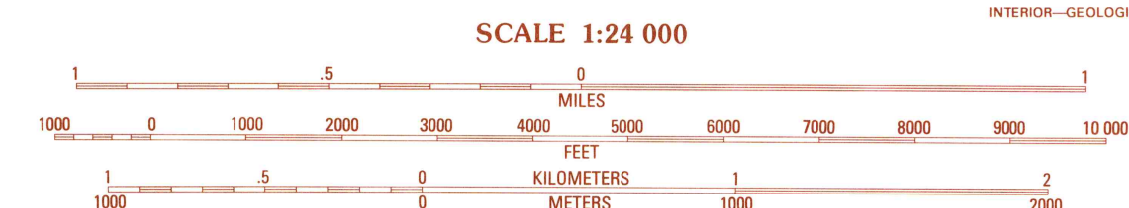
UNITED STATES
DEPARTMENT OF THE INTERIOR
GEOLOGICAL SURVEY

OAK GROVE QUADRANGLE
LOUISIANA—WEST CARROLL PARISH
7.5 MINUTE SERIES (TOPOGRAPHIC)



PRODUCED BY THE UNITED STATES GEOLOGICAL SURVEY CONTROL BY ... USGS AND NOS/NOAA COMPILED FROM AERIAL PHOTOGRAPHS TAKEN ... 1982 FIELD CHECKED ... 1988 MAP EDITED ... 1988 PROJECTION ... LAMBERT CONFORMAL CONIC GRID: 1000-METER UNIVERSAL TRANSVERSE MERCATOR ... ZONE 15 1000-FOOT STATE GRID TICKS ... LOUISIANA, NORTH ZONE UTM GRID DECLINATION ... 051° EAST 1988 MAGNETIC NORTH DECLINATION ... 300° EAST VERTICAL DATUM ... NATIONAL GEODETIC VERTICAL DATUM OF 1929 HORIZONTAL DATUM ... 1927 NORTH AMERICAN DATUM To place on the predicted North American Datum of 1983, move the projection lines as shown by dashed corner ticks (12 meters south and 11 meters east) There may be private inholdings within the boundaries of any Federal and State reservations shown on this map No distinction made between houses, barns, and other buildings Gray tint indicates area in which selected buildings are shown

PROVISIONAL MAP
Produced from original manuscript drawings. Information shown as of date of photography.



ROAD LEGEND

Improved Road
Unimproved Road
Trail

Interstate Route U.S. Route State Route

1	2	3	1 Laark
2	3	4	2 Fiske
3	4	5	3 Kibbenne
4	5	6	4 Goodwill
5	6	7	5 Baxter Bayou
6	7	8	6 Bearskin
7	8		7 Plover
8			8 Caraway Lake

ADJOINING 7.5 QUADRANGLE NAMES

THIS MAP COMPLIES WITH NATIONAL MAP ACCURACY STANDARDS
FOR SALE BY U.S. GEOLOGICAL SURVEY, DENVER, COLORADO 80225, OR RESTON, VIRGINIA 22092
AND LOUISIANA DEPARTMENT OF PUBLIC WORKS, BAYOU ROUGE, LOUISIANA 70804

OAK GROVE, LOUISIANA
SW4 OAK GROVE 15' QUADRANGLE
PROVISIONAL EDITION 1988

32091-G4-TF-024