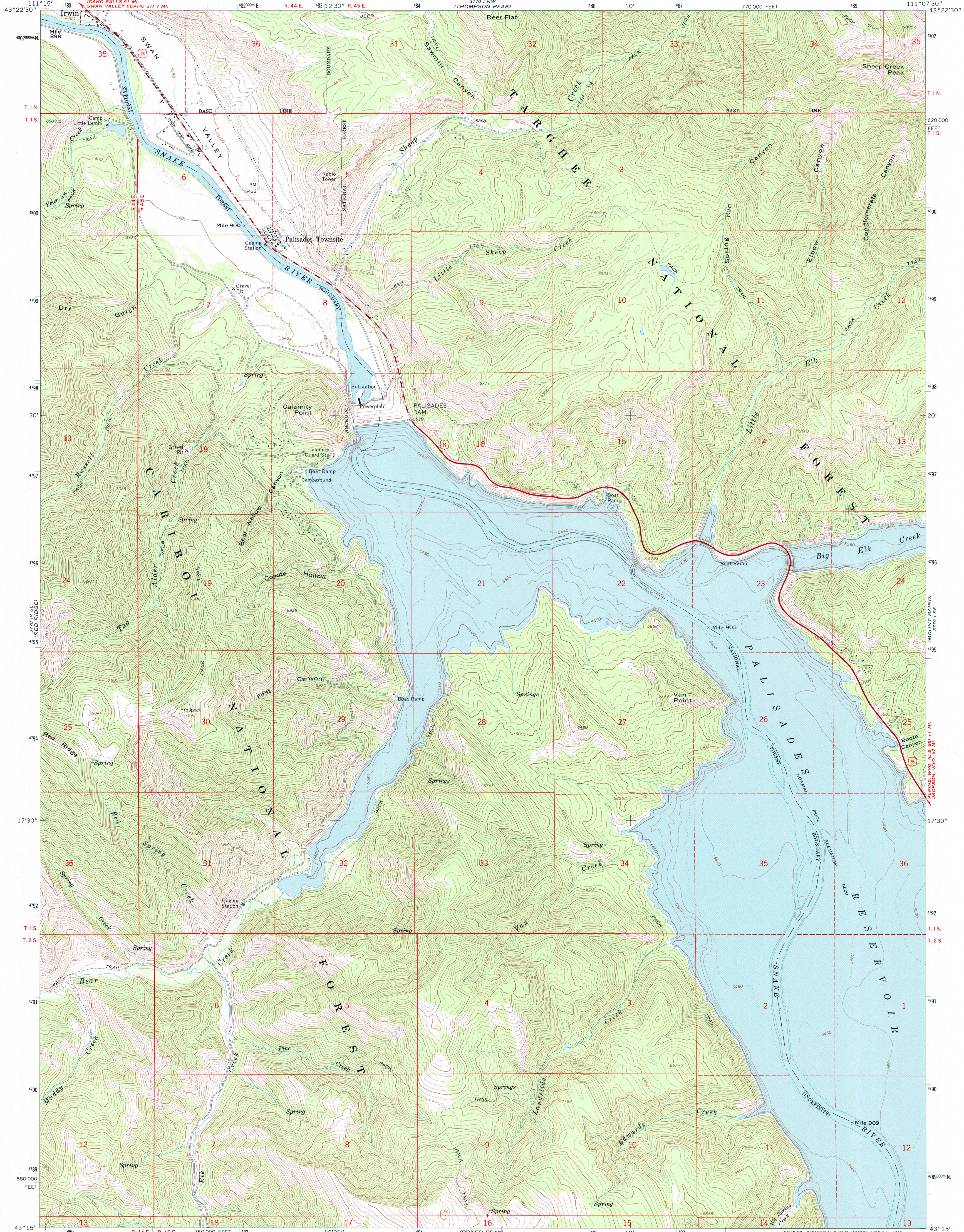


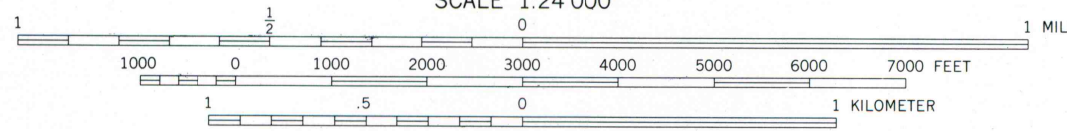
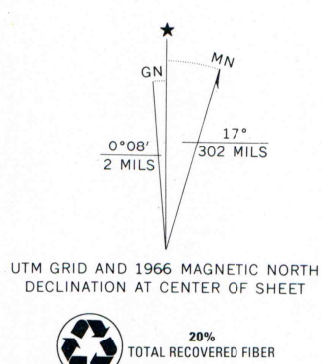


U.S. DEPARTMENT OF THE INTERIOR
U.S. GEOLOGICAL SURVEY

PALISADES DAM QUADRANGLE
IDAHO—BONNEVILLE CO.
7.5 MINUTE SERIES (TOPOGRAPHIC)



Mapped, edited, and published by the Geological Survey
Control by USGS and USC&GS
Topography by photogrammetric methods from aerial photographs taken 1965. Field checked 1966
Underwater contours by U.S. Bureau of Reclamation
Polyconic projection. 1927 North American datum
10,000-foot grid based on Idaho coordinate system, east zone
1000-meter Universal Transverse Mercator grid ticks, zone 12, shown in blue
To place on the predicted North American Datum 1983, move the projection lines 11 meters north and 63 meters east as shown by dashed corner ticks
Fine red dashed lines indicate selected fence lines
There may be private inholdings within the boundaries of the National or State reservations shown on this map



CONTOUR INTERVAL 40 FEET
DOTTED LINES REPRESENT 20-FOOT CONTOURS
NATIONAL GEODETIC VERTICAL DATUM OF 1929

THIS MAP COMPLIES WITH NATIONAL MAP ACCURACY STANDARDS
FOR SALE BY U.S. GEOLOGICAL SURVEY, P.O. BOX 25286, DENVER, COLORADO 80225
A FOLDER DESCRIBING TOPOGRAPHIC MAPS AND SYMBOLS IS AVAILABLE ON REQUEST



PALISADES DAM, IDAHO
N4315—W11107.5/7.5
1966
DMA 3770 I SW—SERIES V893

