

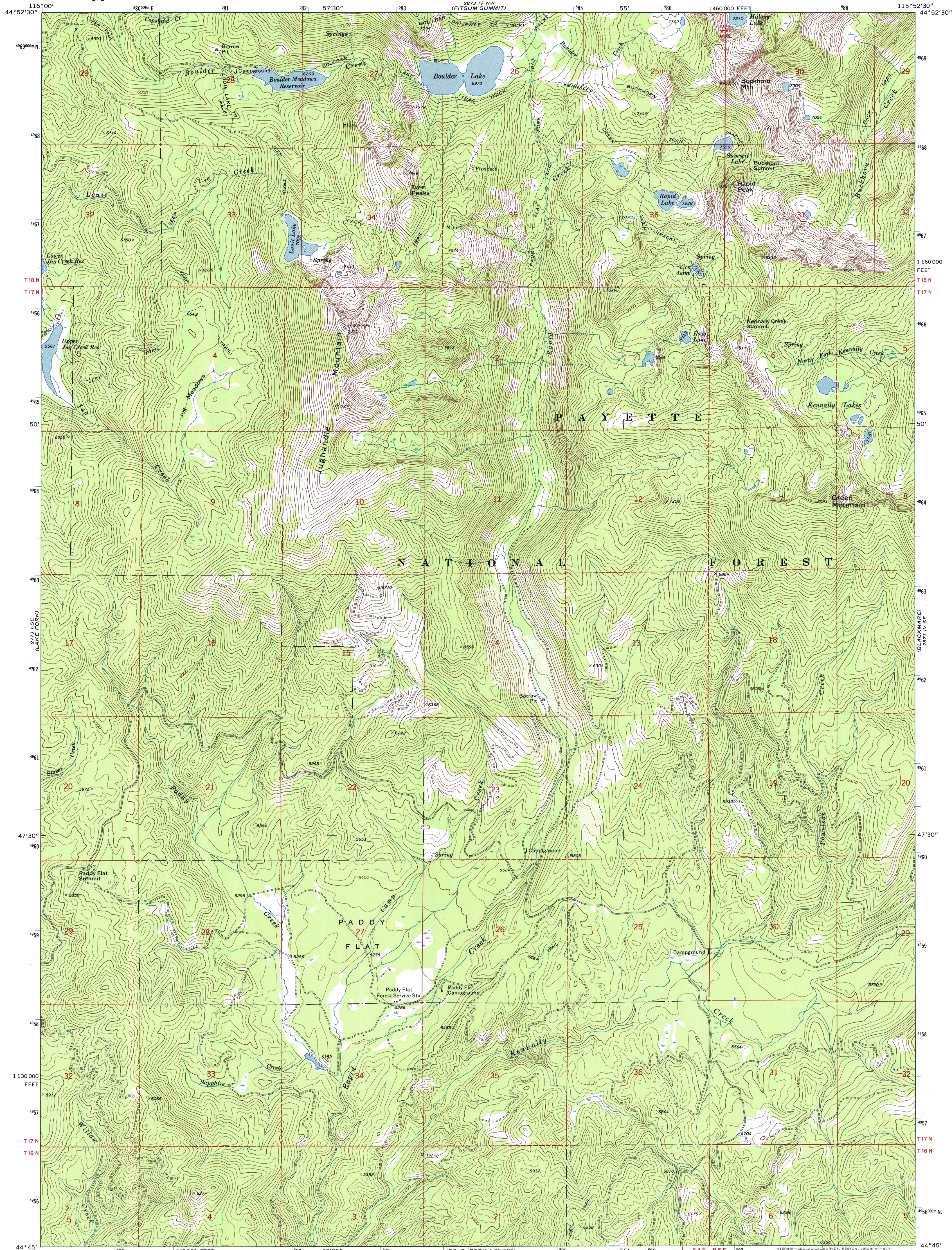


U.S. DEPARTMENT OF THE INTERIOR
U.S. GEOLOGICAL SURVEY

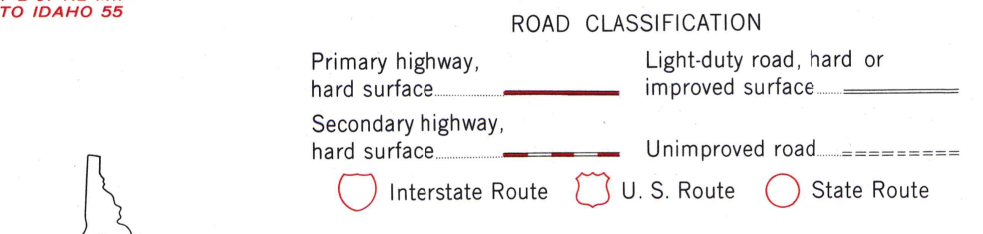
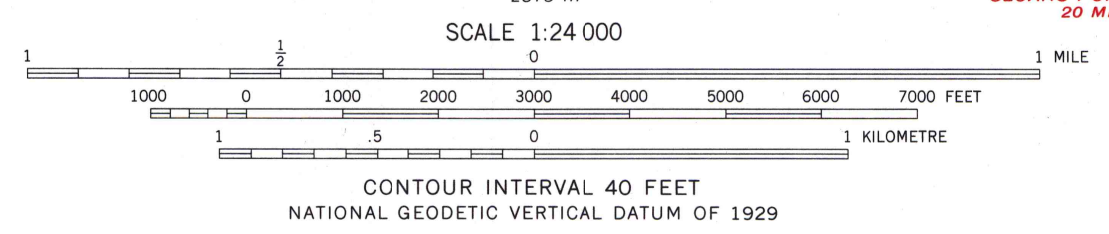
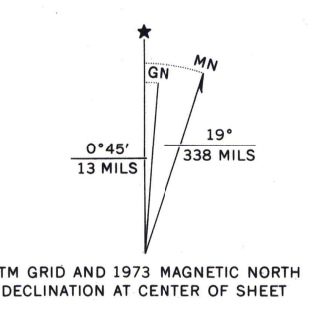
PADDY FLAT QUADRANGLE
IDAHO—VALLEY CO.
7.5 MINUTE SERIES (TOPOGRAPHIC)

2721 N.E. (CASCAD.)

2873 IV N.E. (FITSUM PEAK)



Mapped, edited, and published by the Geological Survey in cooperation with the U. S. Forest Service. Control by USGS, NOS/NOAA, and USFS. Topography by photogrammetric methods from aerial photographs taken 1965 and 1972. Field checked 1973. Projection and 10,000-foot grid ticks: Idaho coordinate system, west zone (transverse Mercator). 1000-metre Universal Transverse Mercator grid ticks, zone 11, shown in blue. 1927 North American datum.



THIS MAP COMPLIES WITH NATIONAL MAP ACCURACY STANDARDS FOR SALE BY U.S. GEOLOGICAL SURVEY, P.O. BOX 25286, DENVER, COLORADO 80225. A FOLDER DESCRIBING TOPOGRAPHIC MAPS AND SYMBOLS IS AVAILABLE ON REQUEST.

PADDY FLAT, IDAHO
N4445—W11552.5/7.5
1973

AMS 2873 IV SW—SERIES V895