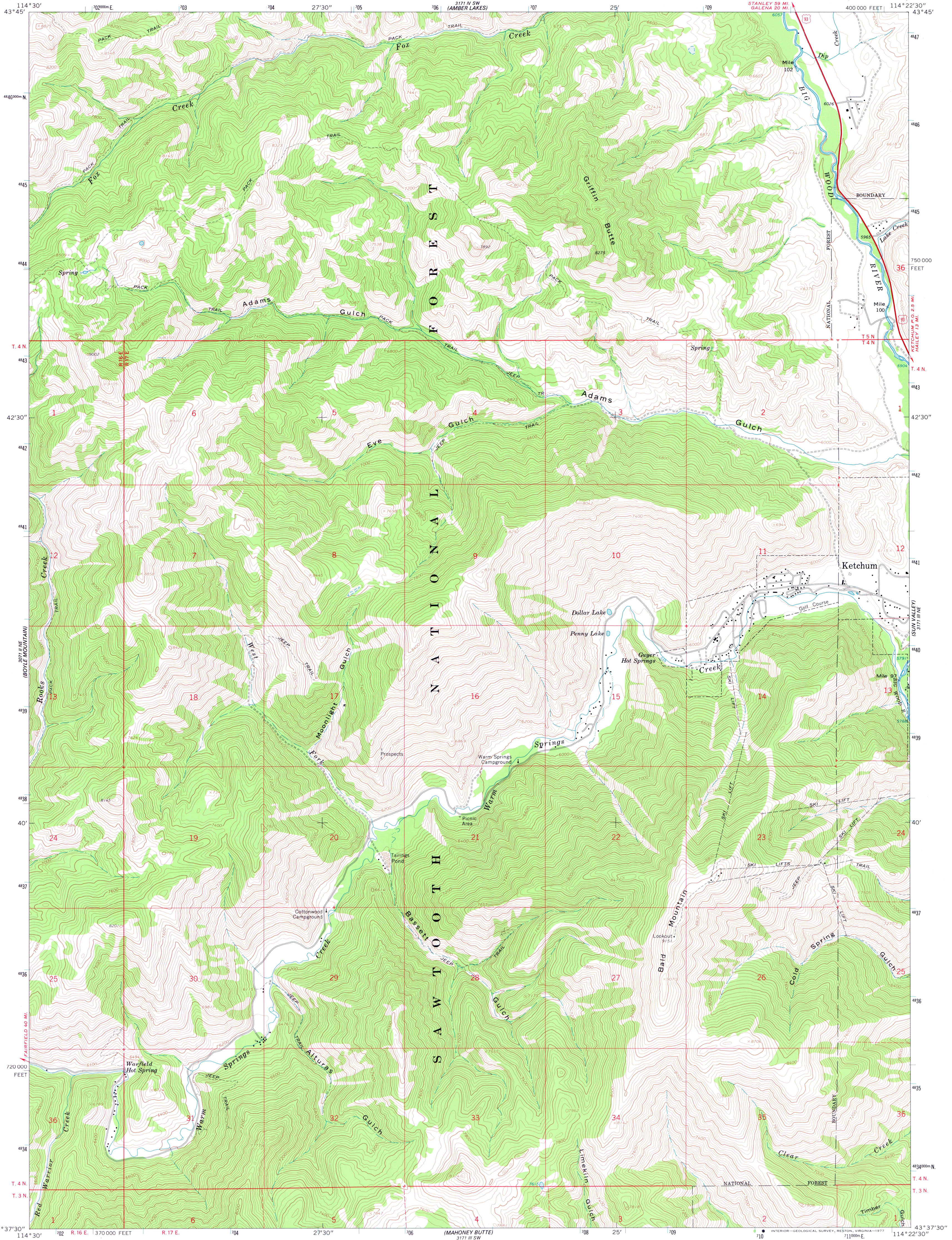


3771 N SW
HO/Springs

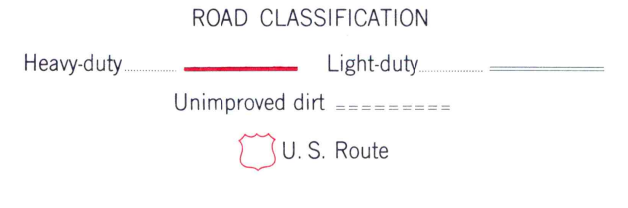
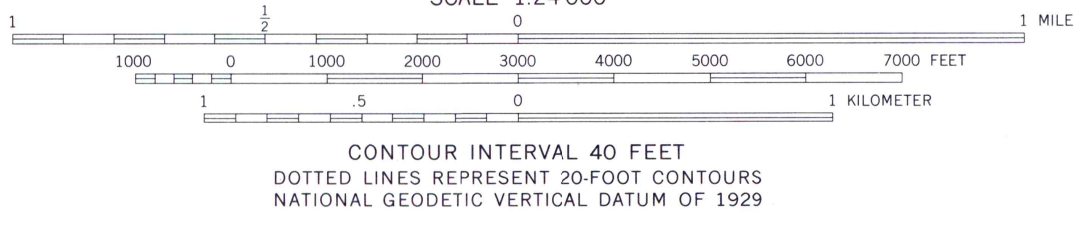
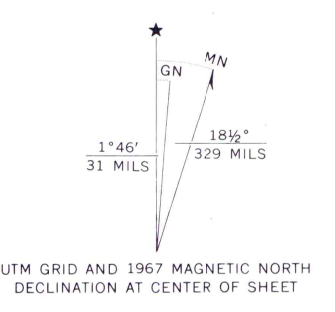
UNITED STATES
DEPARTMENT OF THE INTERIOR
GEOLOGICAL SURVEY

GRIFFIN BUTTE QUADRANGLE
BLAINE CO. - IDAHO
7.5 MINUTE SERIES (TOPOGRAPHIC)

3771 N SW
ROCKWALL CANYON



Mapped, edited, and published by the Geological Survey
Control by USGS and USC&GS
Topography by photogrammetric methods from aerial photographs taken 1966. Field checked 1967
Polyconic projection. 1927 North American datum
10,000-foot grid based on Idaho coordinate system, central zone
1000-meter Universal Transverse Mercator grid ticks, zone 11, shown in blue
Where omitted, land lines have not been established
National Forest shown by proclamation boundary
Private ownership not shown within National Forest



GRIFIN BUTTE, IDAHO
N4337.5—W11422.5/7.5

THIS MAP COMPLIES WITH NATIONAL MAP ACCURACY STANDARDS
FOR SALE BY U. S. GEOLOGICAL SURVEY, DENVER, COLORADO 80225, OR RESTON, VIRGINIA 22092
A FOLDER DESCRIBING TOPOGRAPHIC MAPS AND SYMBOLS IS AVAILABLE ON REQUEST

1967
AMS 3171 III NW—SERIES V893