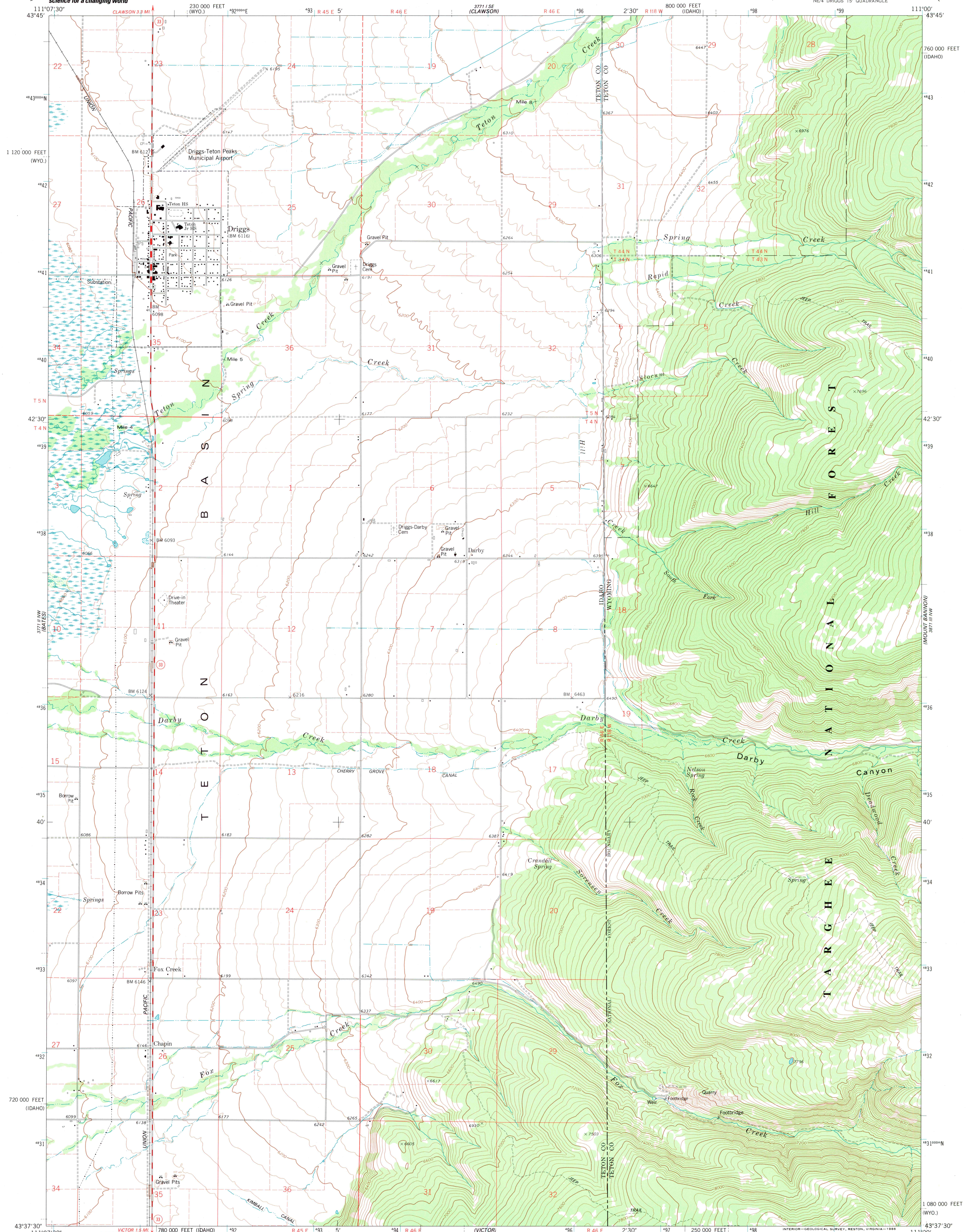


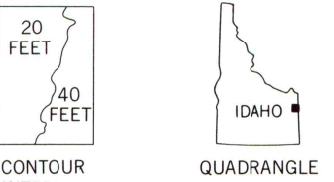
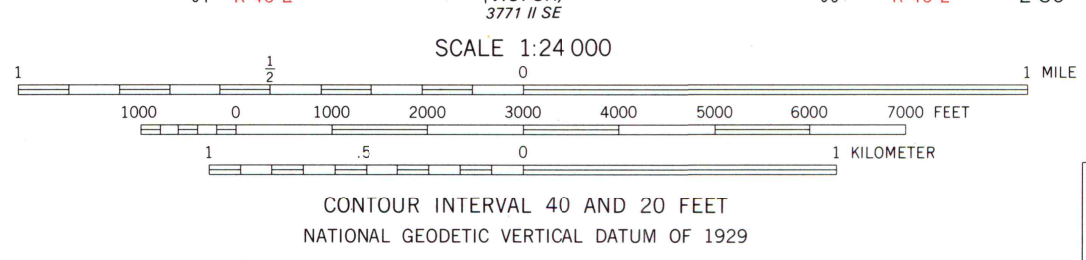
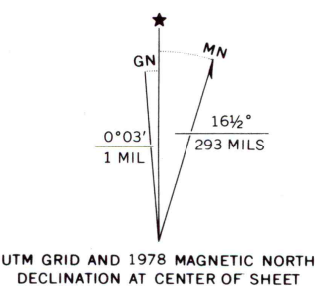


U.S. DEPARTMENT OF THE INTERIOR
U.S. GEOLOGICAL SURVEY

DRIGGS QUADRANGLE
IDAHO—WYOMING
7.5 MINUTE SERIES (TOPOGRAPHIC)
NE/4 DRIGGS 15' QUADRANGLE



Mapped, edited, and published by the Geological Survey
Control by USGS and NOS/NOAA
Topography by photogrammetric methods from aerial photographs taken 1973. Field checked 1974. Map edited 1978
Projection: Idaho coordinate system, east zone (transverse Mercator)
10,000-foot grid ticks based on Idaho coordinate system, east zone and Wyoming coordinate system, west zone
1000-meter Universal Transverse Mercator grid ticks, zone 12, shown in blue. 1927 North American datum
To place on the predicted North American Datum 1983 move the projection lines 11 meters north and 63 meters east as shown by dashed corner ticks
Where omitted land lines have not been established there may be private inholdings within the boundaries of the National or State reservations shown on this map



ROAD CLASSIFICATION

Primary highway, hard surface	Light-duty road, hard or improved surface
Secondary highway, hard surface	Unimproved road
Interstate Route	U. S. Route
	State Route

DRIGGS, IDAHO—WYO.
NE/4 DRIGGS 15' QUADRANGLE
43111-F1-TF-024
1978
DMA 3771 II NE—SERIES V893

THIS MAP COMPLIES WITH NATIONAL MAP ACCURACY STANDARDS
FOR SALE BY U.S. GEOLOGICAL SURVEY, P.O. BOX 25286, DENVER, COLORADO 80225
A FOLDER DESCRIBING TOPOGRAPHIC MAPS AND SYMBOLS IS AVAILABLE ON REQUEST

Fine red dashed lines indicate selected fence and field lines where generally visible on aerial photographs. This information is un-checked.

