

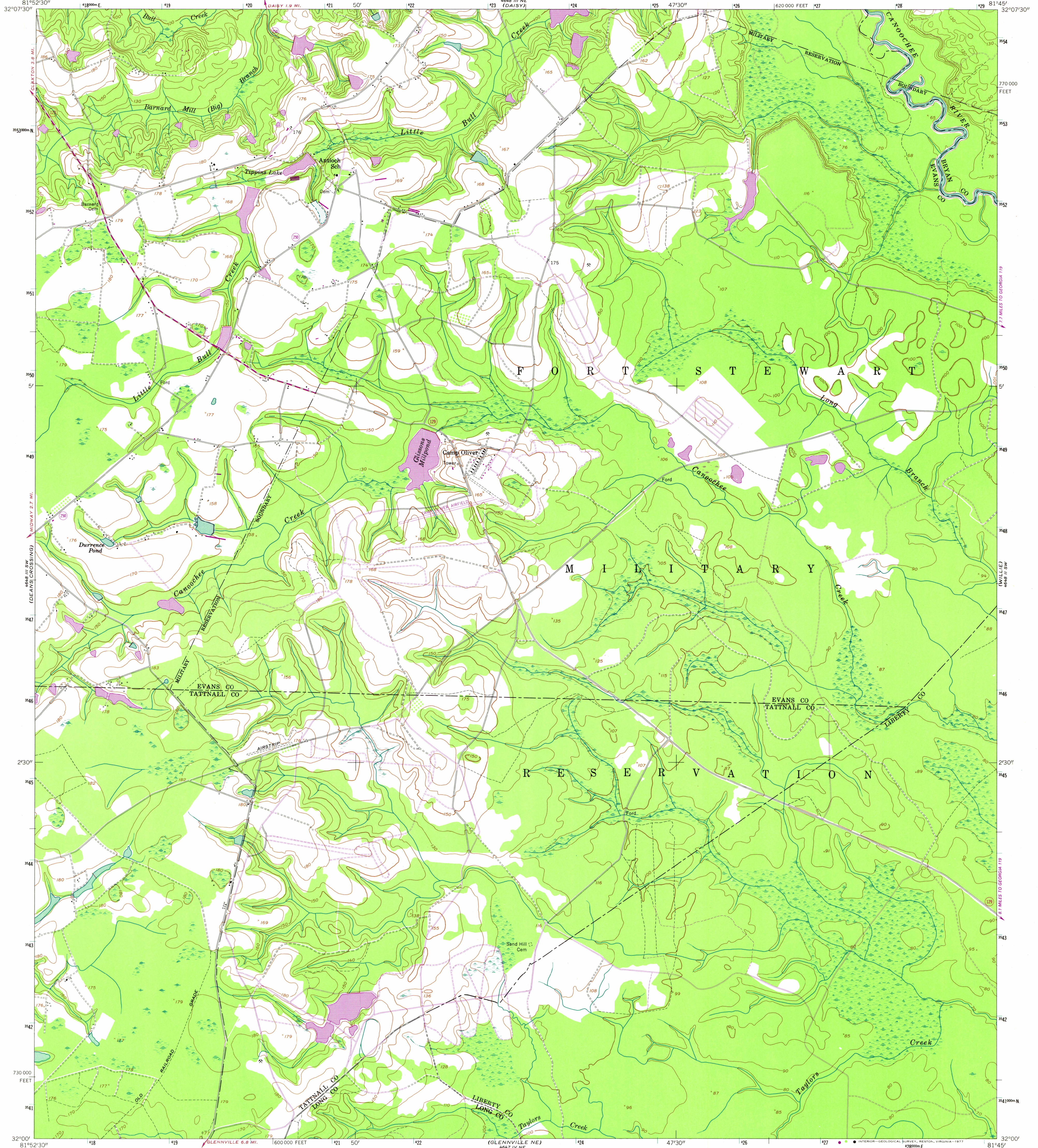
CLAXTON 15' QUADRANGLE
4648 III NE (DAISY)

UNITED STATES
DEPARTMENT OF THE INTERIOR
GEOLOGICAL SURVEY

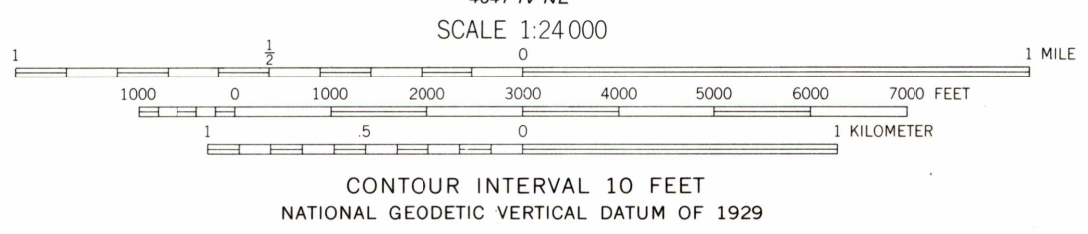
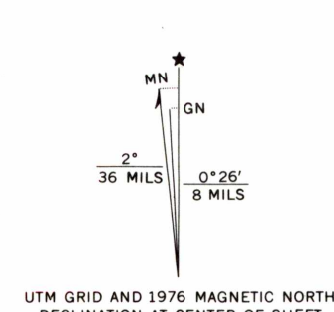
UNITED STATES
DEPARTMENT OF THE ARMY
CORPS OF ENGINEERS

GLISSONS MILLPOND QUADRANGLE
GEORGIA
7.5 MINUTE SERIES (TOPOGRAPHIC)
SE/4 CLAXTON 15' QUADRANGLE

4648 III NE (DAISY)
4648 III NE (DAISY)



Mapped by the Army Map Service
Published for civil use by the Geological Survey
Control by USC&GS, USCE, and Georgia Geodetic Survey
Topography from aerial photographs by photogrammetric methods
Aerial photographs taken 1947. Planimetric detail revised from
aerial photographs taken 1957. Field check 1958
Polyconic projection. 1927 North American datum
10,000-foot grid based on Georgia coordinate system,
east zone
1000-meter Universal Transverse Mercator grid ticks,
zone 17, shown in blue
Revisions shown in purple compiled by the Geological Survey from
aerial photographs taken 1976. This information not field checked



ROAD CLASSIFICATION
Medium-duty ——— Light-duty ———
Unimproved dirt - - - - -
State Route ○

THIS MAP COMPLIES WITH NATIONAL MAP ACCURACY STANDARDS
FOR SALE BY U. S. GEOLOGICAL SURVEY, RESTON, VIRGINIA 22092
A FOLDER DESCRIBING TOPOGRAPHIC MAPS AND SYMBOLS IS AVAILABLE ON REQUEST

GLISSONS MILLPOND, GA.
SE/4 CLAXTON 15' QUADRANGLE
N 3200—W 8145/7.5
1958
PHOTOREVISED 1976
AMS 4648 III SE—SERIES V845