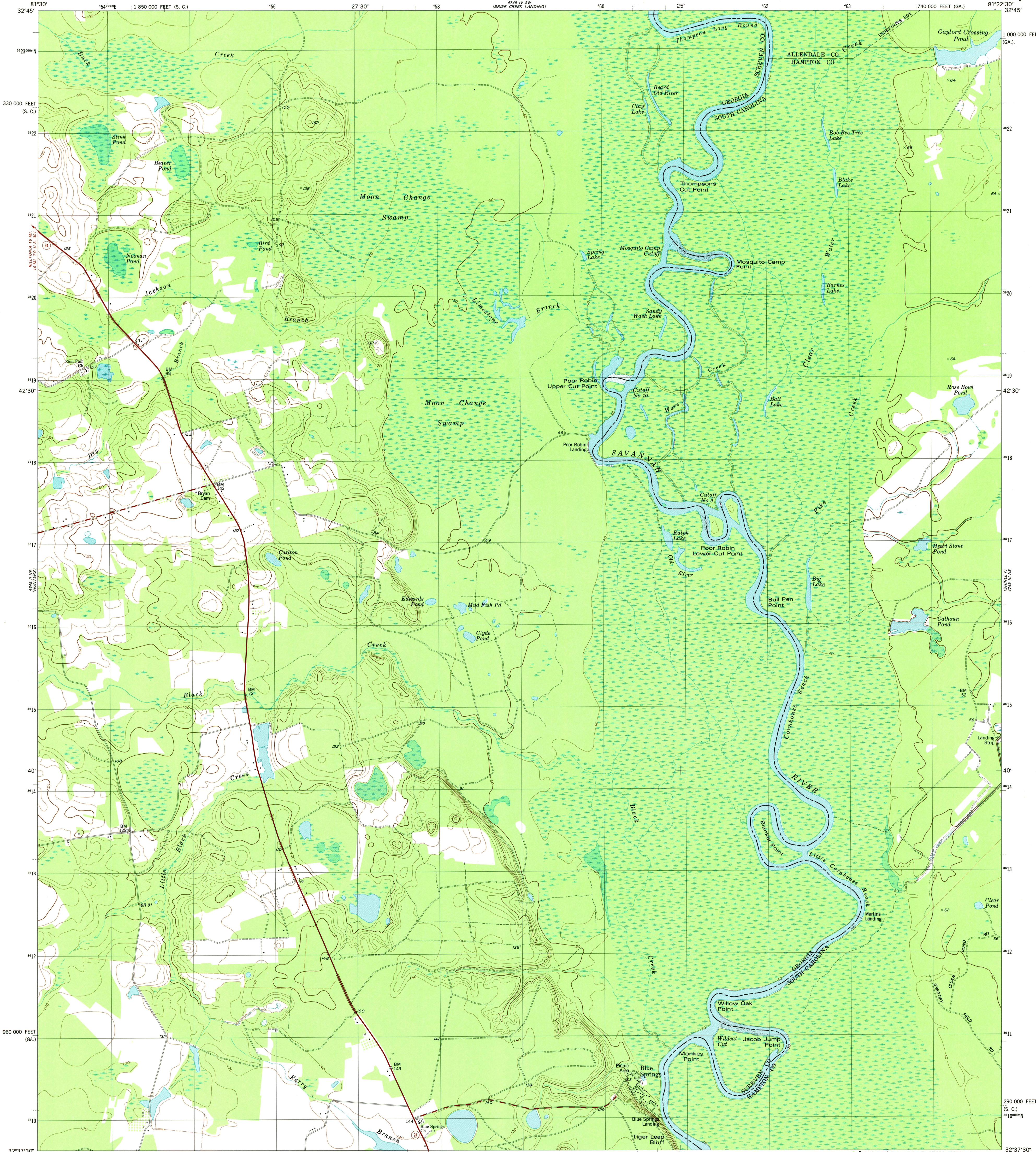
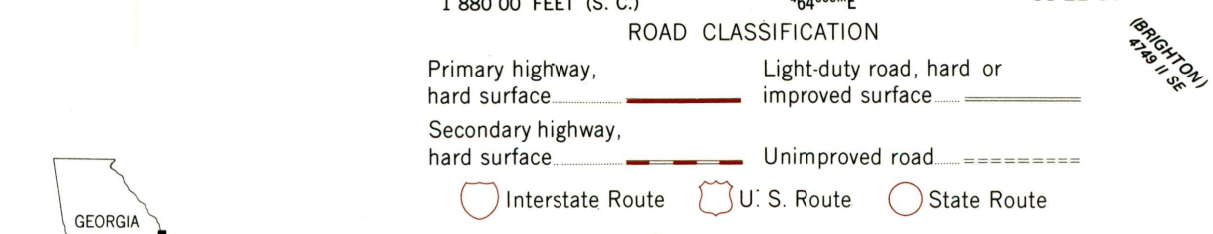
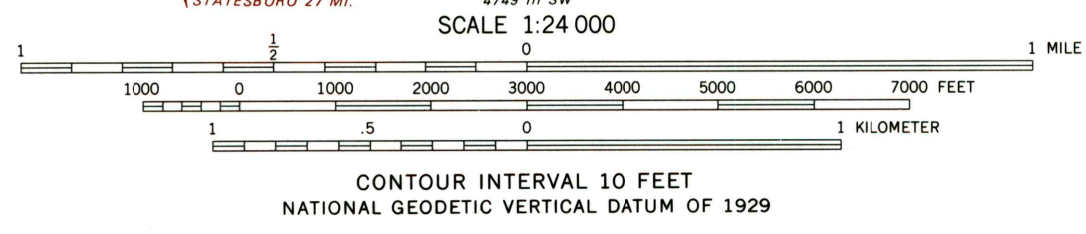
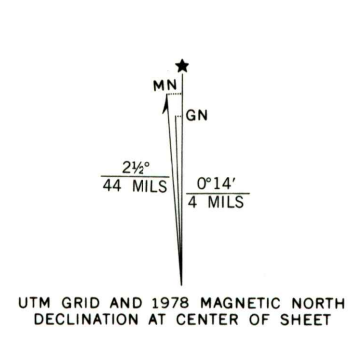


UNITED STATES
DEPARTMENT OF THE INTERIOR
GEOLOGICAL SURVEY

BLUE SPRINGS LANDING QUADRANGLE
GEORGIA—SOUTH CAROLINA
7.5 MINUTE SERIES (TOPOGRAPHIC)
NW/4 SHIRLEY 15' QUADRANGLE



Mapped, edited, and published by the Geological Survey
Control by USGS and NOS/NOAA
Topography by photogrammetric methods from aerial photographs
taken 1972. Field checked 1976. Map edited 1978
Projection: Georgia coordinate system, east zone
(transverse Mercator)
10,000-foot grid ticks based on Georgia coordinate
system, east zone, and South Carolina coordinate
system, south zone
1000-meter Universal Transverse Mercator grid, zone 17
1927 North American datum
Fine red dashed lines indicate selected fence and field lines where
generally visible on aerial photographs. This information is unchecked



THIS MAP COMPLIES WITH NATIONAL MAP ACCURACY STANDARDS
FOR SALE BY U. S. GEOLOGICAL SURVEY
DENVER, COLORADO 80225, OR RESTON, VIRGINIA 22092
A FOLDER DESCRIBING TOPOGRAPHIC MAPS AND SYMBOLS IS AVAILABLE ON REQUEST

BLUE SPRINGS LANDING, GA.—S. C.
NW/4 SHIRLEY 15' QUADRANGLE
N3237.5—W8122.5/7.5
1978
AMS 4749 III NW—SERIES V845