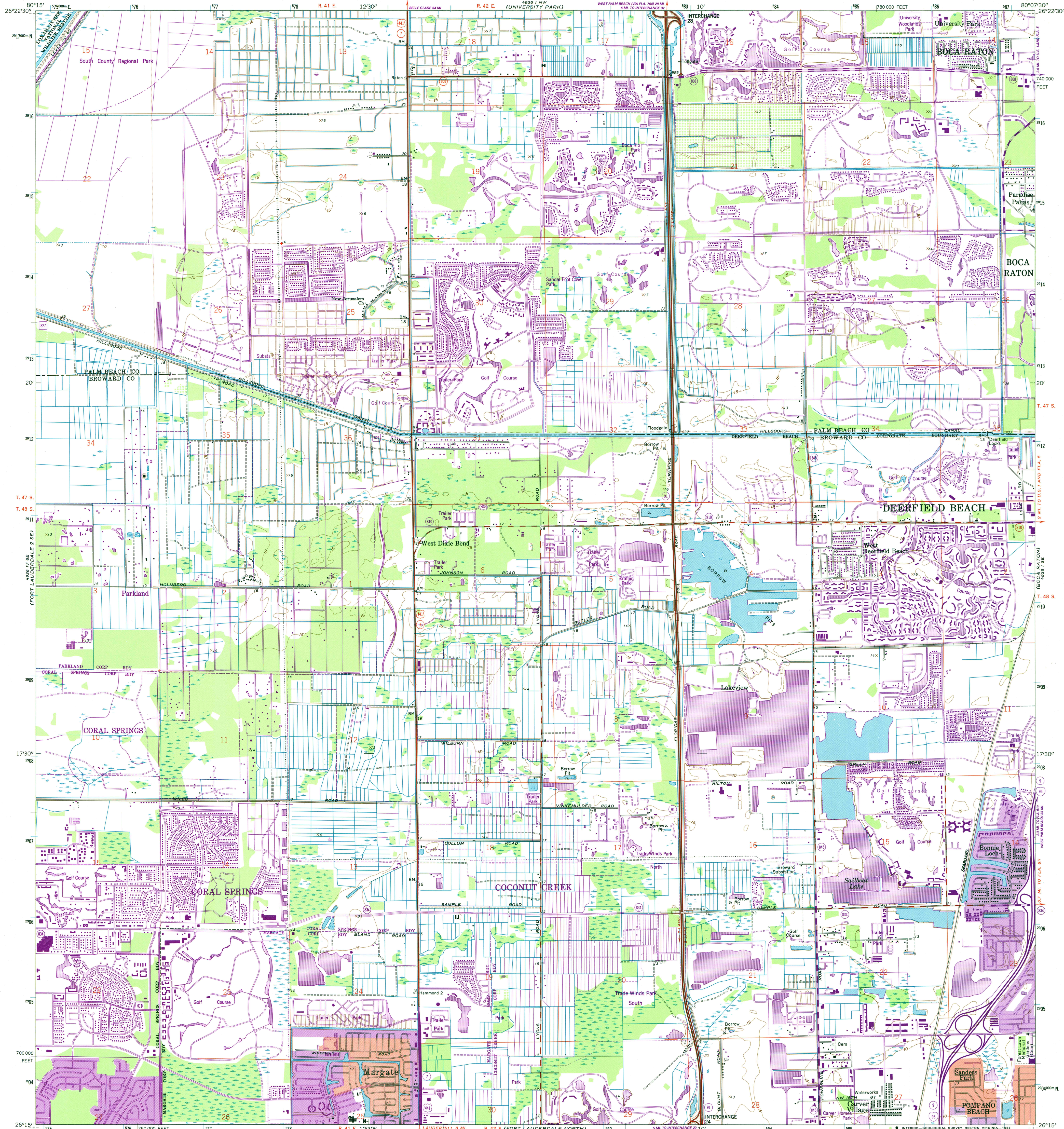


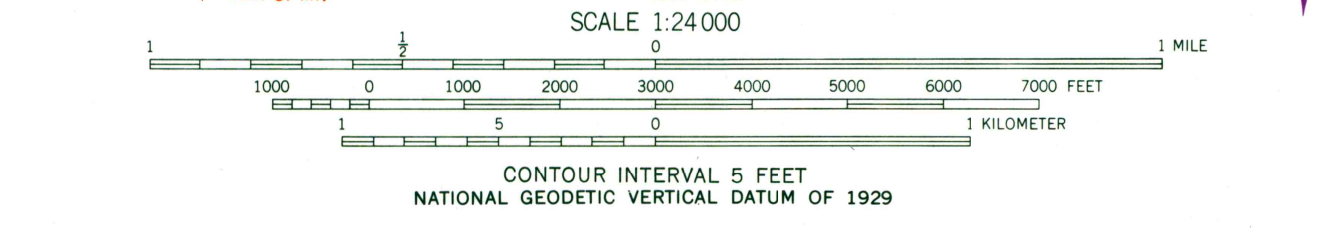
UNITED STATES  
DEPARTMENT OF THE INTERIOR  
GEOLOGICAL SURVEY

WEST DIXIE BEND QUADRANGLE  
FLORIDA  
7.5 MINUTE SERIES (TOPOGRAPHIC)



Mapped by U. S. Coast & Geodetic Survey  
Edited and published by the Geological Survey  
Control by NOS/NOAA and USCE  
Planimetry by photogrammetric methods from aerial photographs taken 1942. Topography by planetable surveys 1946  
Revised by the Geological Survey from aerial photographs taken 1961  
Field checked 1962  
Polyconic projection. 10,000-foot grid ticks based on Florida coordinate system, east zone. 1000-meter Universal Transverse Mercator grid ticks, zone 17, shown in blue  
1927 North American Datum  
To place on the predicted North American Datum 1983  
move the projection lines 38 meters south and  
23 meters west as shown by dashed corner ticks  
Red tint indicates areas in which only landmark buildings are shown  
Dotted land lines established by State of Florida  
There may be private inholdings within the boundaries of the National or State reservations shown on this map

UTM GRID AND 1983 MAGNETIC NORTH  
DECLINATION AT CENTER OF SHEET  
3" 53 MILLS  
0.22" 7 MILLS  
Revisions shown in purple and woodland compiled by the Geological Survey in cooperation with State of Florida agencies from aerial photographs taken 1980 and other sources  
This information not field checked. Map edited 1983  
Purple tint indicates extension of urban areas



THIS MAP COMPLIES WITH NATIONAL MAP ACCURACY STANDARDS  
FOR SALE BY U. S. GEOLOGICAL SURVEY  
DENVER, COLORADO 80225, OR RESTON, VIRGINIA 22092  
A FOLDER DESCRIBING TOPOGRAPHIC MAPS AND SYMBOLS IS AVAILABLE ON REQUEST

ROAD CLASSIFICATION  
Primary highway, hard surface  
Secondary highway, hard surface  
Light-duty road, hard or improved surface  
Unimproved road  
Interstate Route  
U. S. Route  
State Route  
County Route

WEST DIXIE BEND, FLA.  
26080-C2-TF-024  
1962  
PHOTOREVISED 1983  
DMA 4936 I SW - SERIES V847