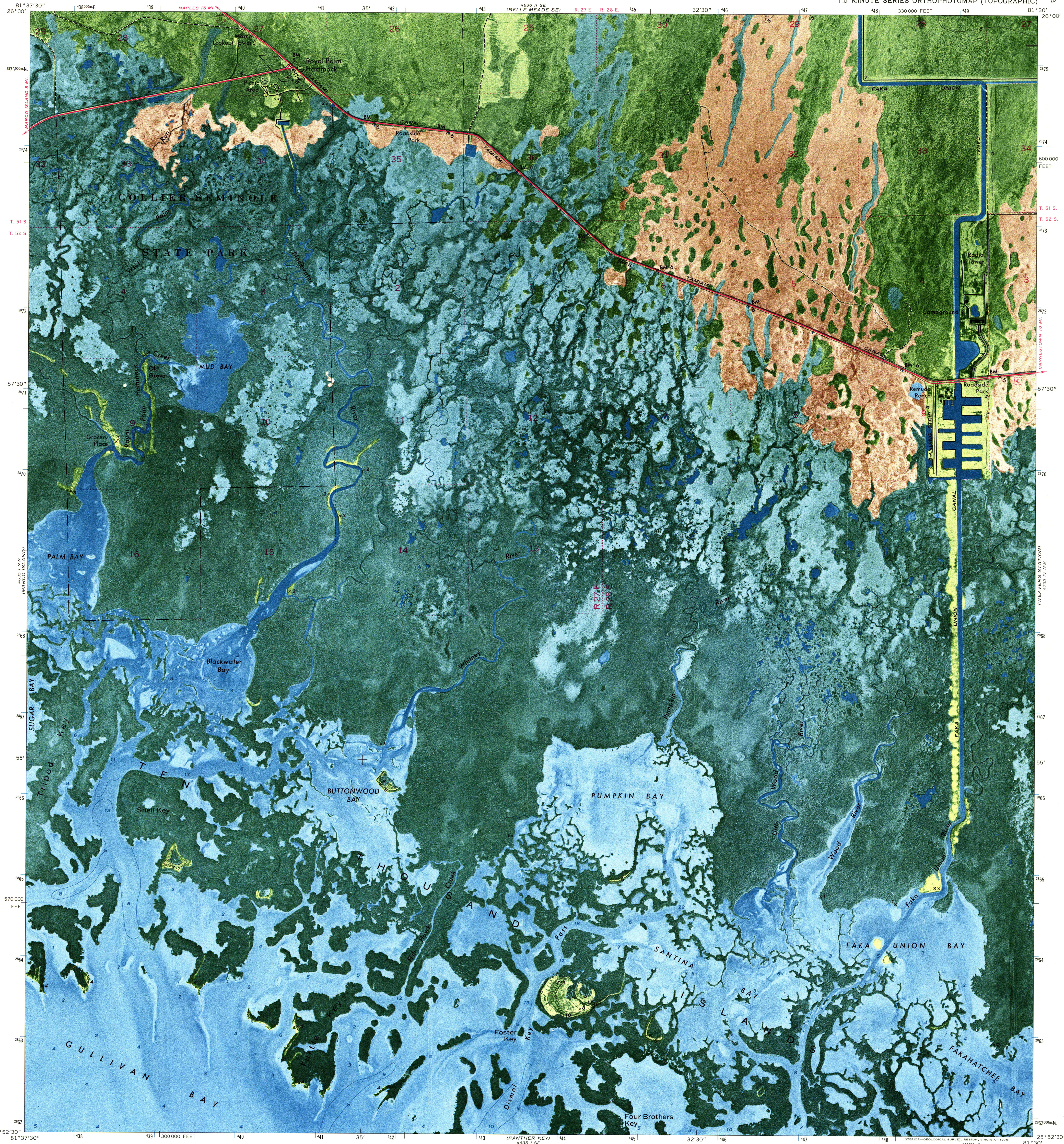
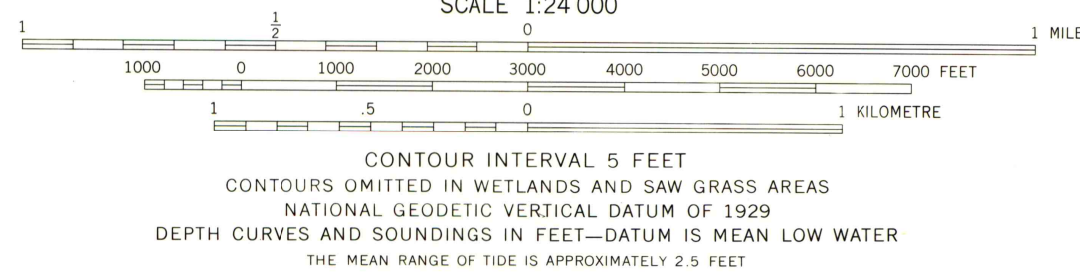
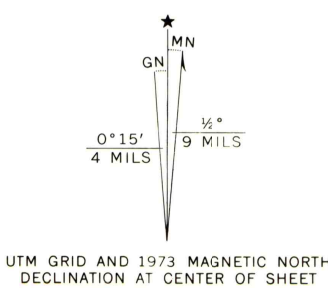


UNITED STATES
DEPARTMENT OF THE INTERIOR
GEOLOGICAL SURVEY

ROYAL PALM HAMMOCK QUADRANGLE
FLORIDA—COLLIER CO.
7.5 MINUTE SERIES ORTHOPHOTOMAP (TOPOGRAPHIC)



Mapped, edited, and published by the Geological Survey
Control by USGS and USC&GS
Orthophotomap prepared from aerial photograph taken January 27, 1971
Topography by planetable surveys 1973
Selected hydrographic data compiled from USC&GS Chart 642 SC (1973)
This information is not intended for navigational purposes
Projection and 10,000-foot grid ticks: Florida coordinate system, east zone (transverse Mercator)
1000-metre Universal Transverse Mercator grid ticks, zone 17, shown in blue. 1927 North American datum
Dotted land lines established by private survey
Where omitted, land lines have not been established or are not shown because of insufficient data



THIS MAP COMPLIES WITH NATIONAL MAP ACCURACY STANDARDS
FOR SALE BY U.S. GEOLOGICAL SURVEY, RESTON, VIRGINIA 22092
A FOLDER DESCRIBING TOPOGRAPHIC MAPS AND SYMBOLS IS AVAILABLE ON REQUEST



ROAD CLASSIFICATION
Primary highway, hard surface
Secondary highway, hard surface
Trails
Interstate Route
U. S. Route
State Route
Light-duty road, hard or improved surface
Unimproved road

ROYAL PALM HAMMOCK, FLA.
N2552.5—W8130/7.5

1973

AMS 4635 I NE—SERIES V8470