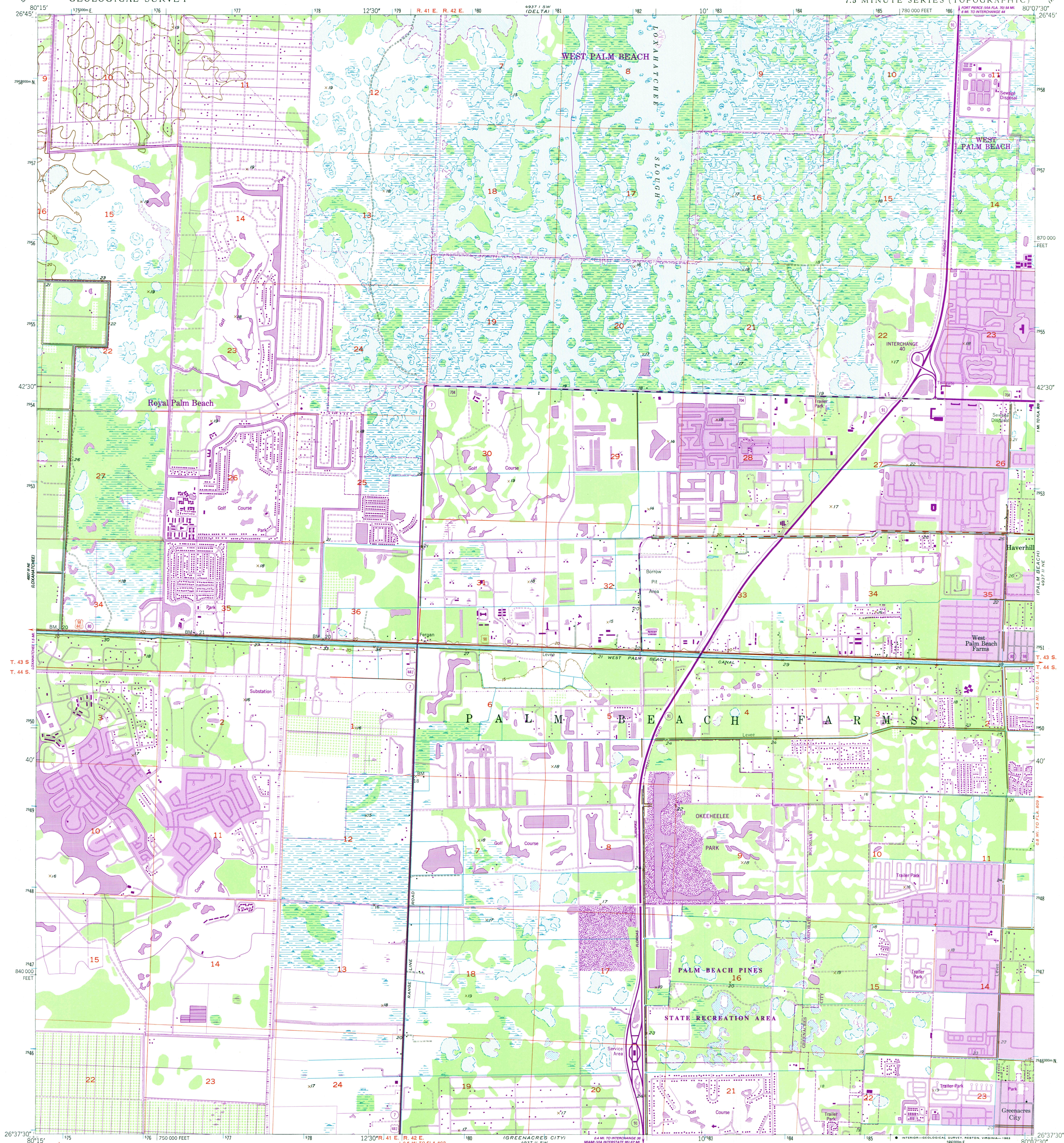


UNITED STATES
DEPARTMENT OF THE INTERIOR
GEOLOGICAL SURVEY

PALM BEACH FARMS QUADRANGLE
FLORIDA-PALM BEACH CO
7.5 MINUTE SERIES (TOPOGRAPHIC)



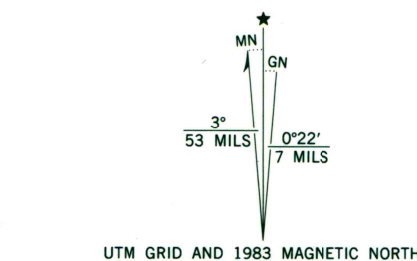
Map by the U. S. Coast & Geodetic Survey
Edited and published by the Geological Survey

Control by NOS/NOAA

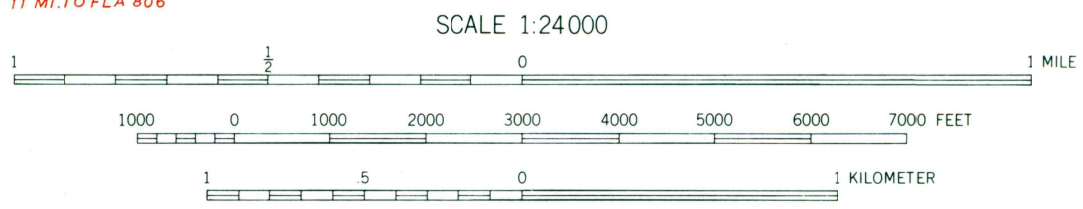
Planimetry in part by photogrammetric methods
from aerial photographs taken 1942
Topography by planimetric surveys 1946

Polyconic projection. 10,000-foot grid ticks based on Florida
coordinate system, east zone. 1000-meter Universal Transverse
Mercator grid ticks, zone 17, shown in blue
1927 North American Datum. To place on the predicted North
American Datum 1983 move the projection lines 36 meters south
and 22 meters west as shown by dashed corner ticks
No distinction is made between dwellings, barns,
commercial and industrial buildings

There may be private inholdings within the boundaries of
the National or State reservations shown on this map



Revisions shown in purple and woodland compiled by the
Geological Survey in cooperation with State of Florida agencies
from aerial photographs taken 1980 and other sources
This information not field checked. Map edited 1983
Purple tint indicates extension of urban areas



THIS MAP COMPLIES WITH NATIONAL MAP ACCURACY STANDARDS
FOR SALE BY U. S. GEOLOGICAL SURVEY
DENVER, COLORADO 80225, OR RESTON, VIRGINIA 22092
A FOLDER DESCRIBING TOPOGRAPHIC MAPS AND SYMBOLS IS AVAILABLE ON REQUEST

ROAD CLASSIFICATION
Primary highway, hard surface ——— Light-duty road, hard or improved surface
Secondary highway, hard surface ——— Unimproved road
Interstate Route ——— U. S. Route ——— State Route
County Route ———

PALM BEACH FARMS, FLA.

26080-F2-TF-024
1946

PHOTOREVISED 1983
DMA 4937 II NW-SERIES V847