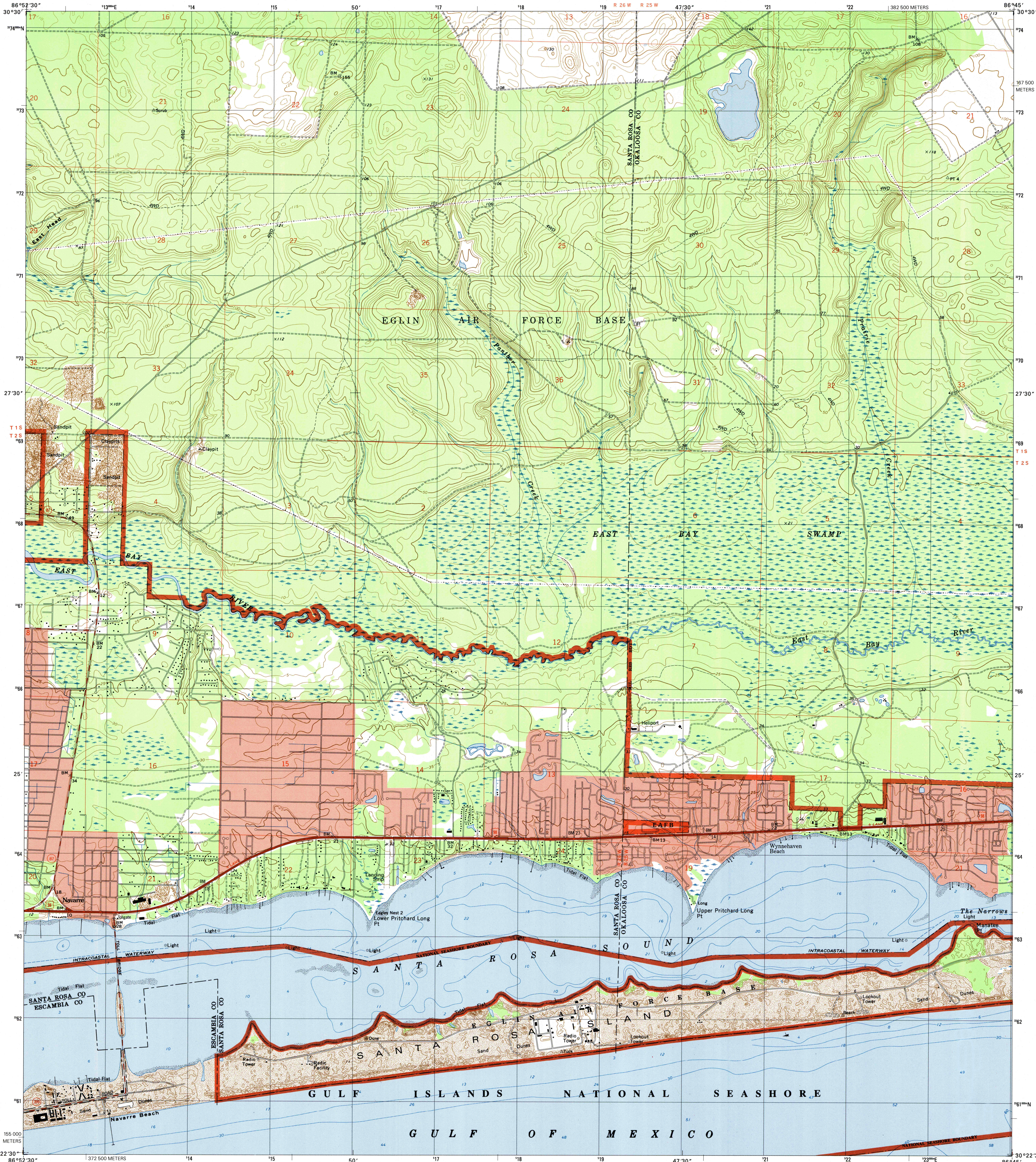




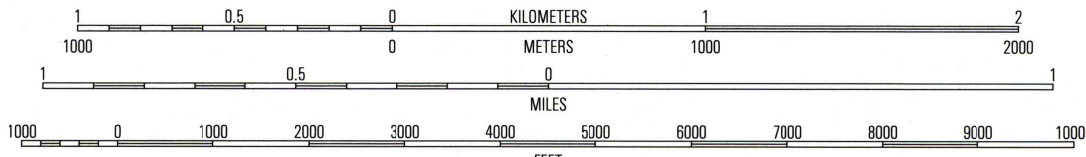
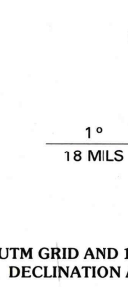
U.S. DEPARTMENT OF THE INTERIOR
U.S. GEOLOGICAL SURVEY



NAVARRE QUADRANGLE
FLORIDA
7.5-MINUTE SERIES (TOPOGRAPHIC)



Produced by the United States Geological Survey
Topography compiled 1969. Planimetry derived from imagery taken 1994 and other sources. Public Land Survey System and survey control current as of 1970.
Selected hydrographic data compiled from NOS Charts 870-SC and 1265 (1970), and 1264 (1969). This information is not intended for navigational purposes.
North American Datum of 1983 (NAD 83). Projection and 1 000-meter grid: Universal Transverse Mercator, zone 16 2 500-meter ticks: Florida Coordinate System of 1983 (north zone).
North American Datum of 1927 (NAD 27) is shown by dashed corner ticks. The values of the shift between NAD 83 and NAD 27 for 7.5-minute intersections are obtainable from National Geodetic Survey NADCON software.
There may be private inholdings within the boundaries of the National or State reservations shown on this map.
Landmark buildings verified 1970.
Where omitted, land lines have not been established.



CONTOUR INTERVAL 5 FEET
NATIONAL GEODETIC VERTICAL DATUM OF 1929
TO CONVERT FROM FEET TO METERS, MULTIPLY BY 0.3048
DEPTH CURVES AND SOUNDINGS IN FEET, DATUM IS MEAN LOWER LOW WATER
THE RELATIONSHIP BETWEEN THE TWO DATUMS IS VARIABLE
THE MEAN RANGE OF TIDE IS APPROXIMATELY 1.4 FEET

THIS MAP COMPLIES WITH NATIONAL MAP ACCURACY STANDARDS
FOR SALE BY U.S. GEOLOGICAL SURVEY, P.O. BOX 25286, DENVER, COLORADO 80225
A FOLDER DESCRIBING TOPOGRAPHIC MAPS AND SYMBOLS IS AVAILABLE ON REQUEST



ROAD CLASSIFICATION
Primary highway
hard surface
Secondary highway
hard surface
Light-duty road, hard or
improved surface
Unimproved road
Interstate Route
U.S. Route
State Route

1	2	3
4	5	6
7	8	9

1 Ward Basin
2 Harold SE
3 Holt SW
4 Holley
5 Mary Esther
6 South of Holley
7
8

NAVARRE, FL
1994

NIMA 3644 IV NE-SERIES V847

