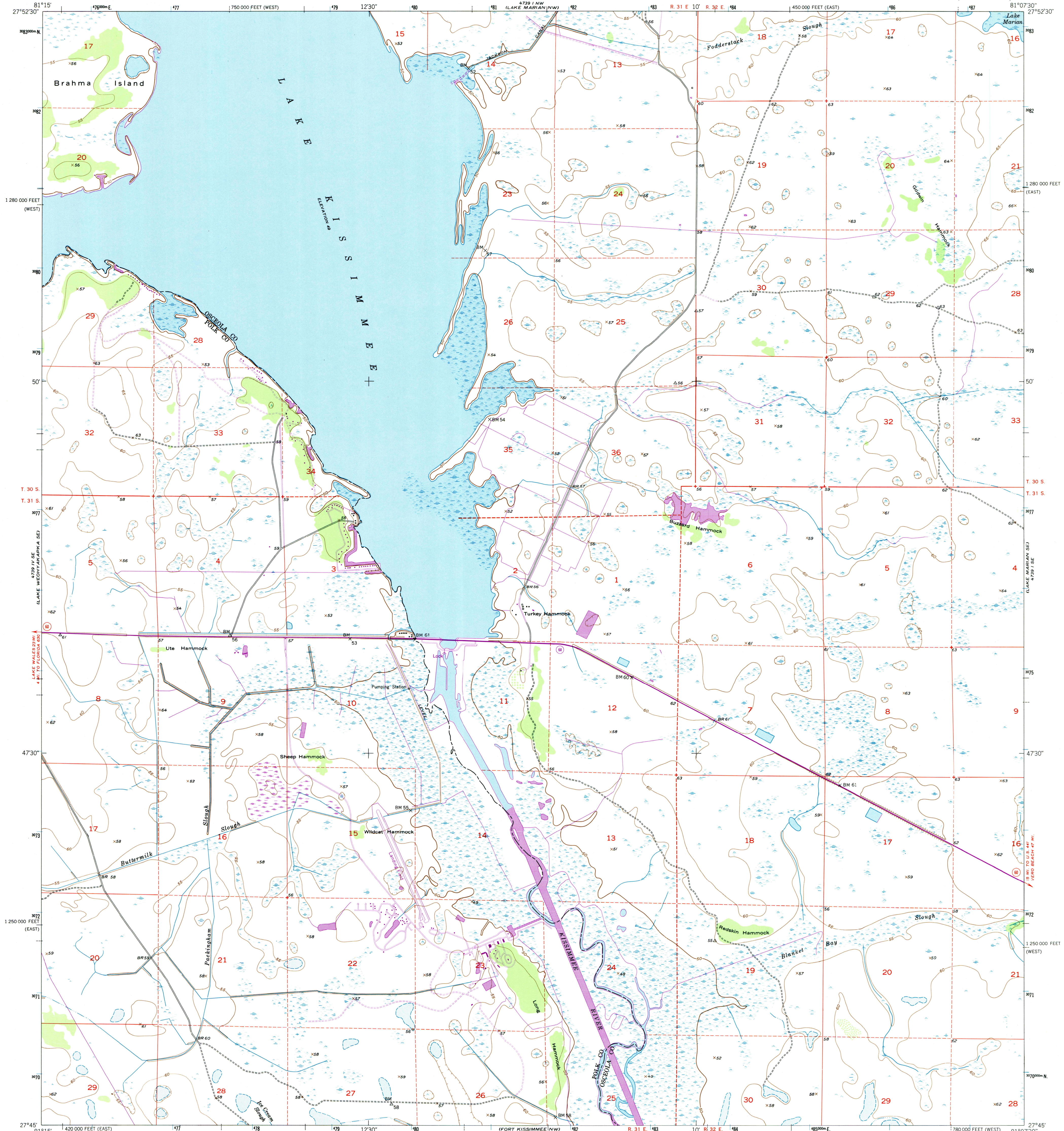


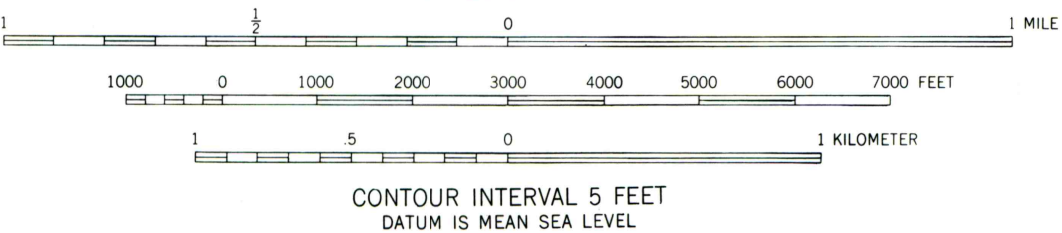
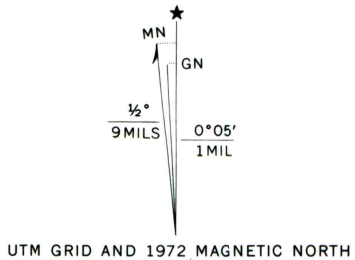
UNITED STATES  
DEPARTMENT OF THE INTERIOR  
GEOLOGICAL SURVEY

UNITED STATES  
DEPARTMENT OF THE ARMY  
CORPS OF ENGINEERS

LAKE MARIAN SW QUADRANGLE  
FLORIDA  
7.5 MINUTE SERIES (TOPOGRAPHIC)



Mapped by the U. S. Corps of Engineers  
Edited and published by the Geological Survey  
Control by USC&GS and USCE  
Culture and drainage in part compiled from aerial photographs  
taken 1950. Topography by plane-table surveys 1950-1951  
Field check by the Geological Survey 1953  
Polyconic projection. 1927 North American datum  
10,000-foot grids based on Florida coordinate system,  
east and west zones  
1000-meter Universal Transverse Mercator grid ticks,  
zone 17, shown in blue  
Dashed land lines indicate approximate locations  
Revisions shown in purple compiled by the Geological Survey from  
aerial photographs taken 1972. This information not field checked



THIS MAP COMPLIES WITH NATIONAL MAP ACCURACY STANDARDS  
FOR SALE BY U. S. GEOLOGICAL SURVEY  
DENVER, COLORADO 80225, OR RESTON, VIRGINIA 22092  
A FOLDER DESCRIBING TOPOGRAPHIC MAPS AND SYMBOLS IS AVAILABLE ON REQUEST



QUADRANGLE LOCATION

ROAD CLASSIFICATION			
Heavy-duty	4 LANE 16 LANE	Light-duty	
Medium-duty	4 LANE 16 LANE	Unimproved dirt	
	U. S. Route		Slate Route

LAKE MARIAN SW, FLA.  
N 2745-W 8107 5/7.5  
1953  
PHOTOREVISED 1972  
AMS 4739 I SW-SERIES V847