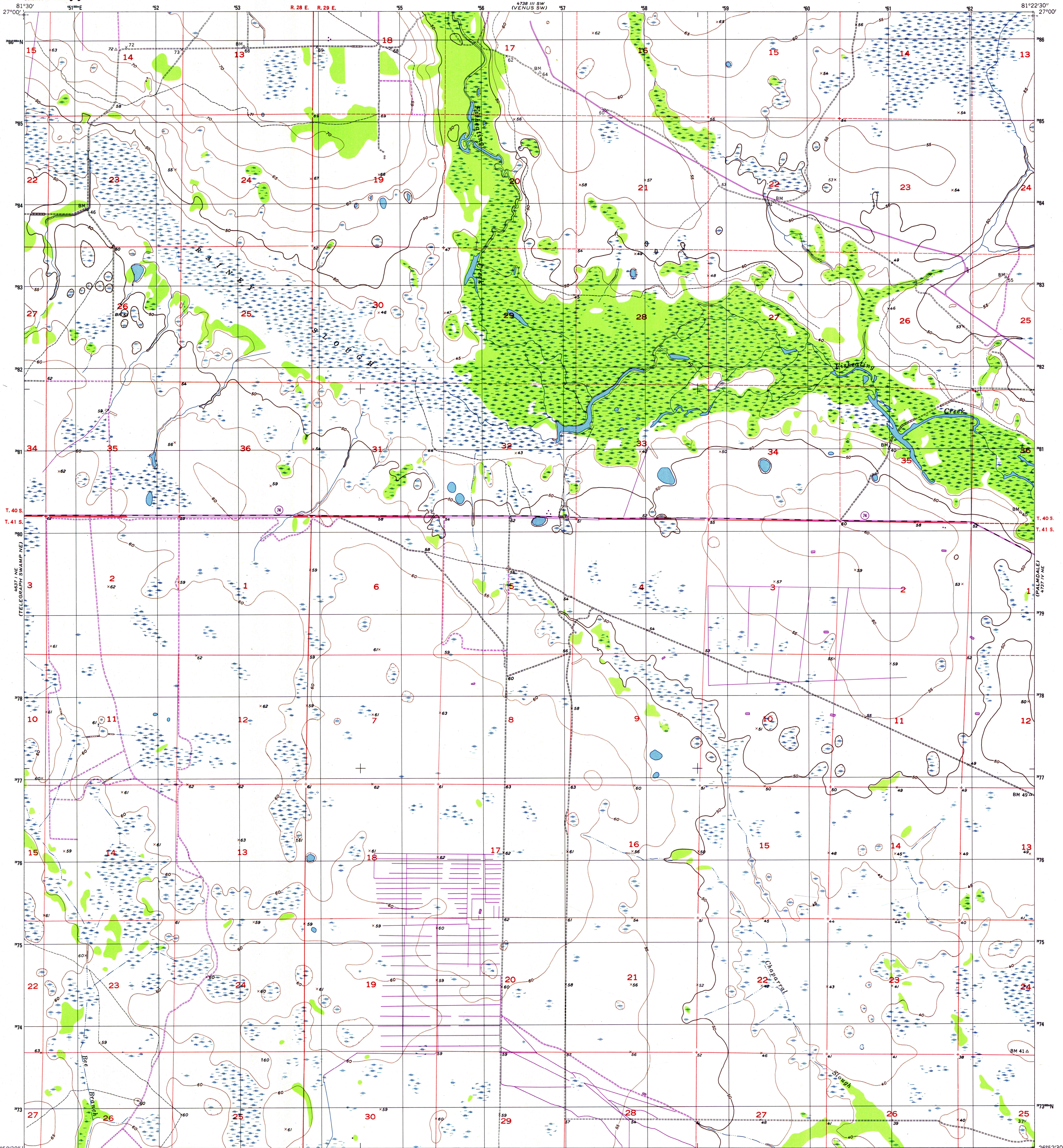


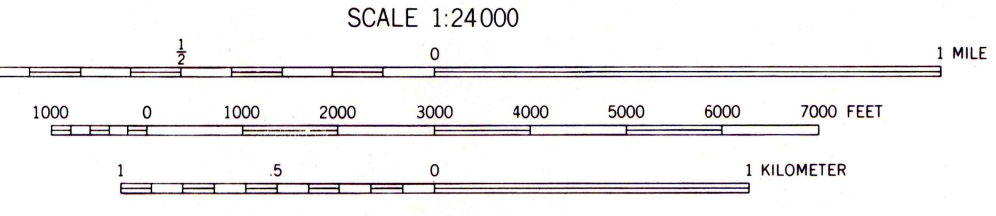
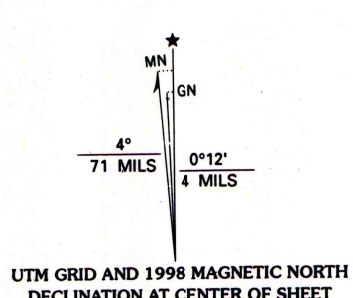


U.S. DEPARTMENT OF THE INTERIOR
U.S. GEOLOGICAL SURVEY

LA BELLE NW QUADRANGLE
FLORIDA—GLADES CO.
7.5 MINUTE SERIES (TOPOGRAPHIC)



Produced by the United States Geological Survey
Topography compiled 1951. Planimetry derived from imagery taken 1973 and other sources. Photospectroscopy using imagery dated 1994; no major culture or drainage changes observed. PLS and survey control current as of 1958. Boundaries verified 1998
North American Datum of 1927 (NAD 27). Projection and 10 000-foot ticks: Florida coordinate system, east zone (Lambert conformal conic)
1000-meter Universal Transverse Mercator grid, zone 17
North American Datum of 1983 (NAD 83) is shown by dashed corner ticks. The values of the shift between NAD 27 and NAD 83 for 7.5-minute intersections are obtainable from National Geodetic Survey NADCON software
Information shown in purple may not meet USGS content standards and may conflict with previously mapped contours



ROAD CLASSIFICATION

Primary highway, hard surface	Light-duty road, hard or improved surface
Secondary highway, hard surface	Unimproved road
Interstate Route	U.S. Route
	State Route



THIS MAP COMPLIES WITH NATIONAL MAP ACCURACY STANDARDS
FOR SALE BY U.S. GEOLOGICAL SURVEY, P.O. BOX 25286, DENVER, COLORADO 80225
A FOLDER DESCRIBING TOPOGRAPHIC MAPS AND SYMBOLS IS AVAILABLE ON REQUEST

LA BELLE NW, FLA.
1994
NIMA 4737 IV NW—SERIES V847

