

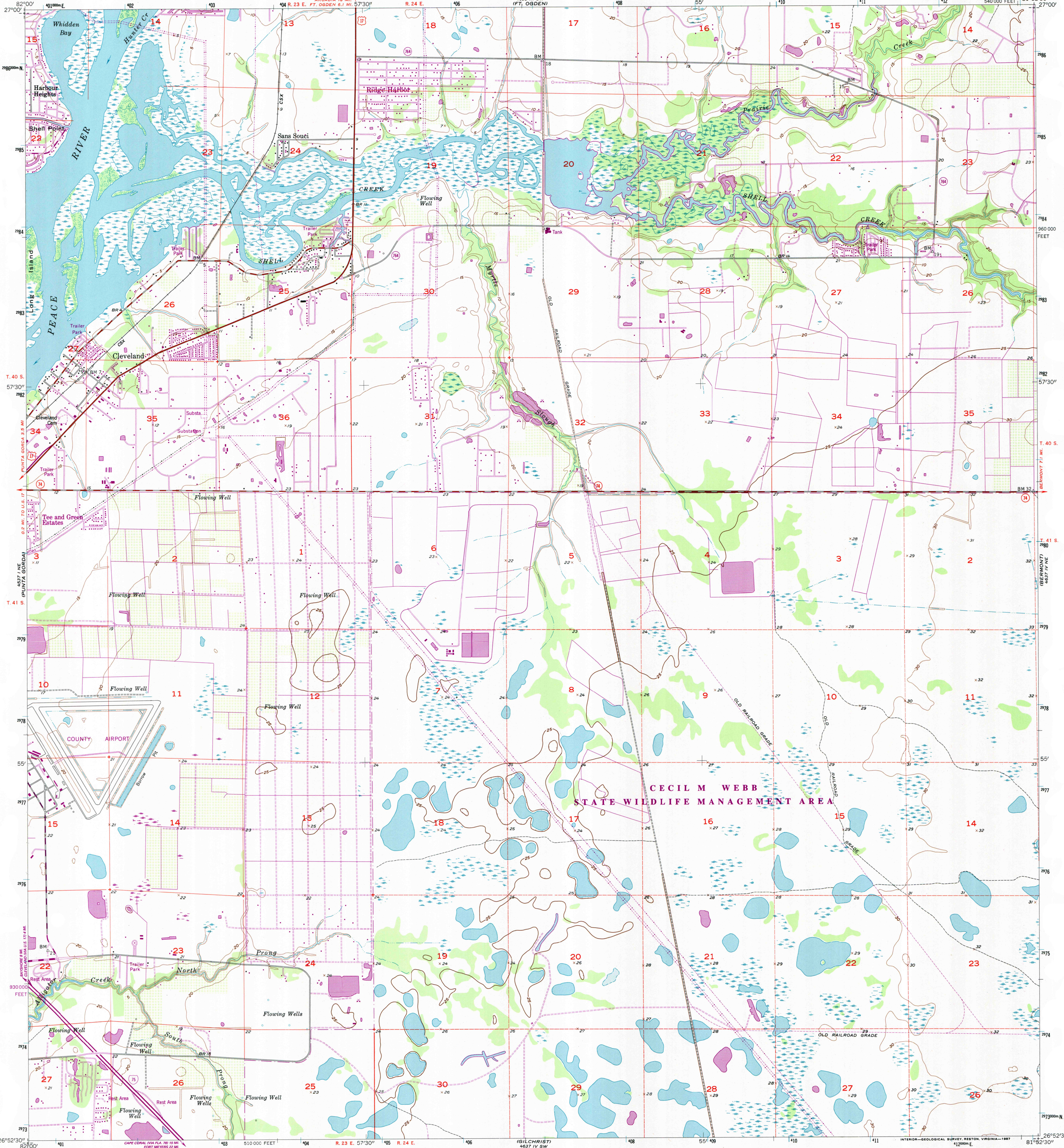
438 1/2 SE  
(MURDOCK SE)



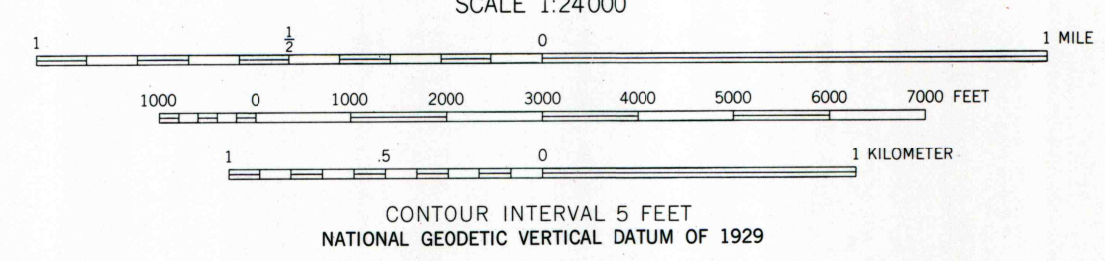
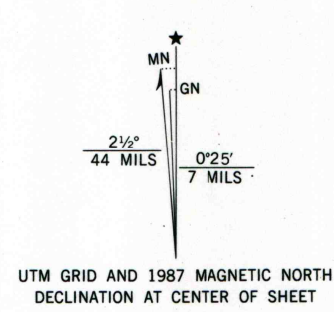
U.S. DEPARTMENT OF THE INTERIOR  
U.S. GEOLOGICAL SURVEY

CLEVELAND QUADRANGLE  
FLORIDA—CHARLOTTE CO.  
7.5 MINUTE SERIES (TOPOGRAPHIC)

438 1/2 SE  
(ARCADIA SE)



Mapped, edited, and published by the Geological Survey  
Control by USGS and USC&GS  
Culture and drainage in part compiled from aerial photographs taken 1951. Topography by planetable surveys 1956  
Polyconic projection. 1927 North American datum  
10,000-foot grid based on Florida coordinate system, east zone  
1000-meter Universal Transverse Mercator grid ticks,  
zone 17, shown in blue  
To place on the predicted North American Datum 1983  
move the projection lines 34 meters south and  
17 meters west as shown by dashed corner ticks  
Dashed land lines indicate approximate locations  
There may be private inholdings within the boundaries  
of the National or State reservations shown on this map



ROAD CLASSIFICATION

Heavy-duty	Light-duty
Medium-duty	Unimproved dirt
U.S. Route	State Route



THIS MAP COMPLIES WITH NATIONAL MAP ACCURACY STANDARDS  
FOR SALE BY U.S. GEOLOGICAL SURVEY  
DENVER, COLORADO 80225 OR RESTON, VIRGINIA 22092  
A FOLDER DESCRIBING TOPOGRAPHIC MAPS AND SYMBOLS IS AVAILABLE ON REQUEST

Revisions shown in purple and woodland compiled in cooperation  
with State of Florida agencies from aerial photographs taken 1984  
and other sources. This information not field checked  
Map edited 1987

CLEVELAND, FLA.  
26081-H8-TF-024  
1956  
PHOTOREVISED 1987  
DMA 4637 IV NW—SERIES V847

