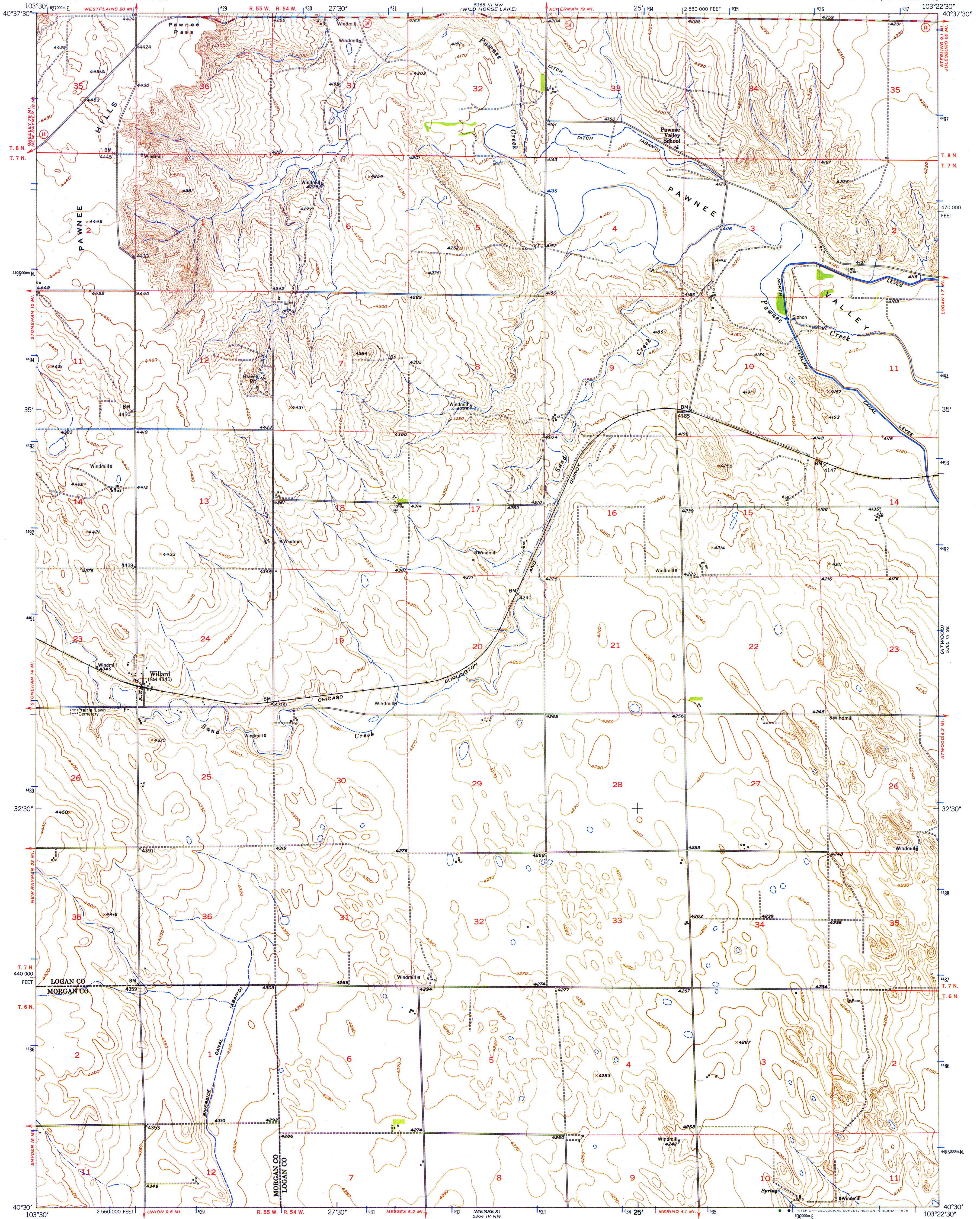
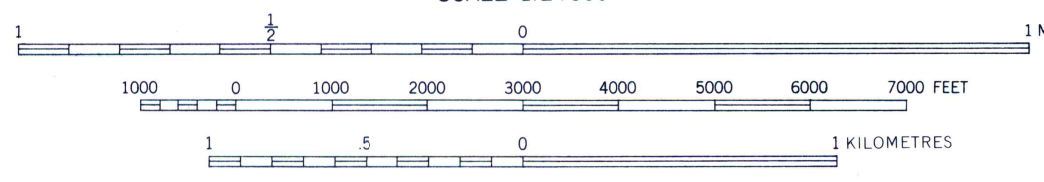
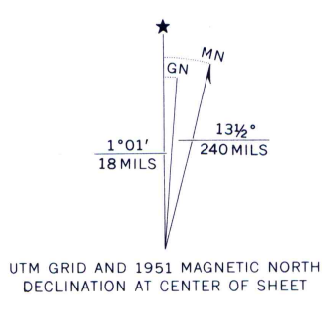


5365 III SW (ATWOOD NE)



Maped, edited, and published by the Geological Survey as part of the Department of the Interior program for the development of the Missouri River Basin Control by USGS and USC&GS
Culture and drainage in part compiled from aerial photographs taken September 1948
Topography by plane-table methods 1951
Polyconic projection. 1927 North American datum
10,000-foot grid based on Colorado coordinate system, north zone
Dashed land lines indicate approximate location
1000-metre Universal Transverse Mercator grid ticks, zone 13, shown in blue



CONTOUR INTERVAL 10 FEET
NATIONAL GEODETIC VERTICAL DATUM OF 1929

THIS MAP COMPLIES WITH NATIONAL MAP ACCURACY STANDARDS
FOR SALE BY U. S. GEOLOGICAL SURVEY, DENVER, COLORADO 80225, OR RESTON, VIRGINIA 22092
A FOLDER DESCRIBING TOPOGRAPHIC MAPS AND SYMBOLS IS AVAILABLE ON REQUEST



WILLARD, COLO.
N4030-W10322.5/7.5

1951

AMS 5365 III SW—SERIES V877