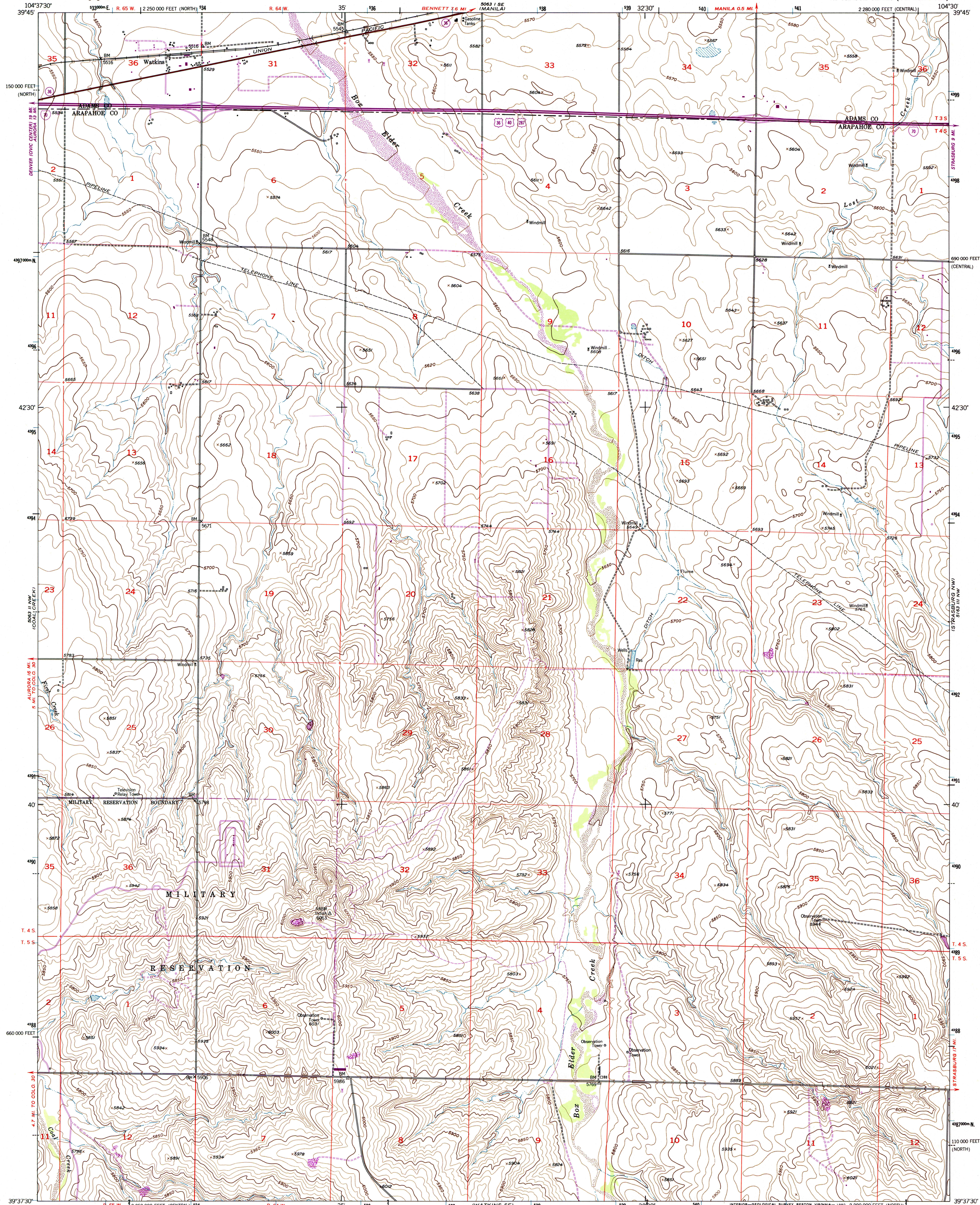


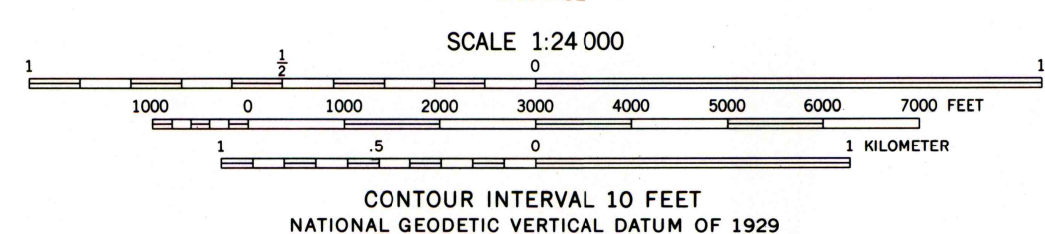
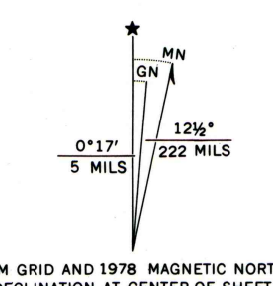


U.S. DEPARTMENT OF THE INTERIOR
U.S. GEOLOGICAL SURVEY

WATKINS QUADRANGLE
COLORADO
7.5 MINUTE SERIES (TOPOGRAPHIC)



Mapped, edited, and published by the Geological Survey as part of the Department of the Interior program for the development of the Missouri River Basin Control by USGS and NOS/NOAA Culture and drainage in part compiled from aerial photographs taken 1950. Topography by planetab surveys 1954 Polyconic projection. 1927 North American datum 10,000-foot grid based on Colorado coordinate system, central and north zones 1000-meter Universal Transverse Mercator grid ticks, zone 13, shown in blue Revisions shown in purple compiled from aerial photographs taken 1975 and other source data. This information not field checked. Map edited 1978



CONTOUR INTERVAL 10 FEET
NATIONAL GEODETIC VERTICAL DATUM OF 1929



ROAD CLASSIFICATION

Heavy-duty	Light-duty
Medium-duty	Unimproved dirt
U.S. Route	Slate Route
Interstate Route	

THIS MAP COMPLIES WITH NATIONAL MAP ACCURACY STANDARDS FOR SALE BY U.S. GEOLOGICAL SURVEY, P.O. BOX 25286, DENVER, COLORADO 80225 A FOLDER DESCRIBING TOPOGRAPHIC MAPS AND SYMBOLS IS AVAILABLE ON REQUEST

WATKINS, COLO.
N3937.5—W10430/7.5
1954
PHOTOREVISED 1978
DMA 5063 II NE—SERIES V877

