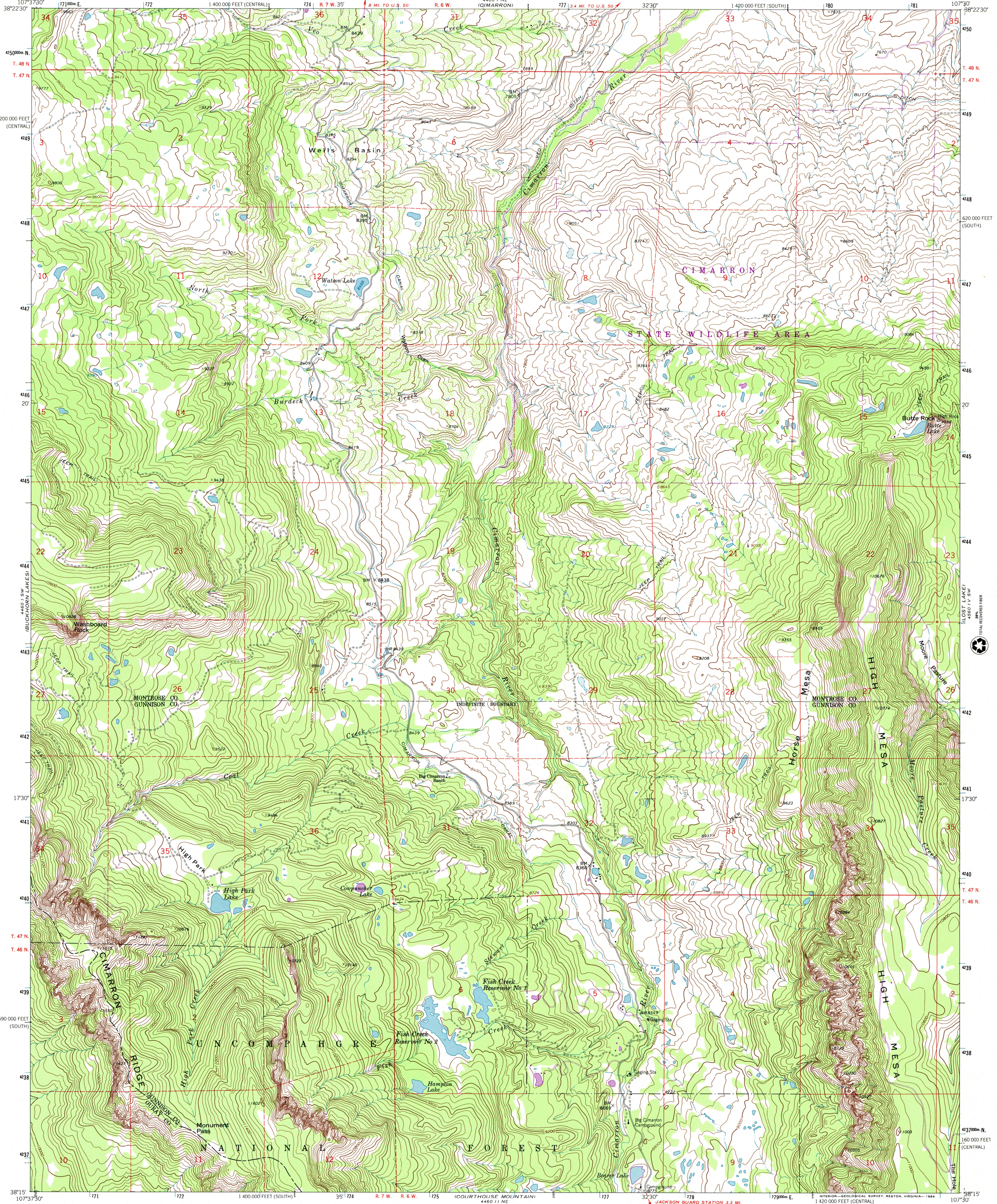




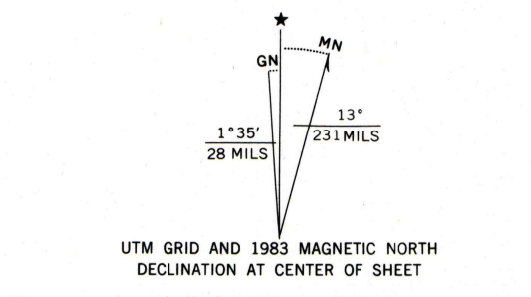
U.S. DEPARTMENT OF THE INTERIOR  
U.S. GEOLOGICAL SURVEY

WASHBOARD ROCK QUADRANGLE  
COLORADO  
7.5 MINUTE SERIES (TOPOGRAPHIC)

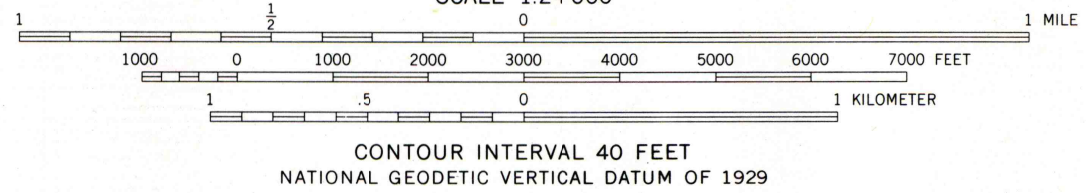


Mapped, edited, and published by the Geological Survey

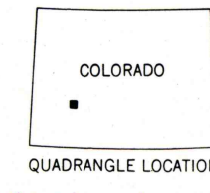
Control by USGS and NOS/NOAA  
Topography by photogrammetric methods from aerial photographs taken 1962. Field checked 1963  
Polyconic projection. 1927 North American Datum  
10,000-foot grids based on Colorado coordinate system, south and central zones  
1000-meter Universal Transverse Mercator grid ticks, zone 13, shown in blue  
Fine red dashed lines indicate selected fence lines  
Where omitted, land line has not been established  
To place on the predicted North American Datum 1983 move the projection lines 4 meters north and 55 meters east as shown by dashed corner ticks



There may be private inholdings within the boundaries of the National or State reservations shown on this map



CONTOUR INTERVAL 40 FEET  
NATIONAL GEODETIC VERTICAL DATUM OF 1929



Revisions shown in purple compiled from aerial photographs taken 1979 and other source data. This information not field checked. Map edited 1983

ROAD CLASSIFICATION  
Light-duty \_\_\_\_\_ Unimproved dirt -----

WASHBOARD ROCK, COLO.  
38107-C5-TF-024

1963  
PHOTOREVISED 1983  
DMA 4460 1 SE-SERIES V877

THIS MAP COMPLIES WITH NATIONAL MAP ACCURACY STANDARDS  
FOR SALE BY U.S. GEOLOGICAL SURVEY, P.O. BOX 25286, DENVER, COLORADO 80225  
A FOLDER DESCRIBING TOPOGRAPHIC MAPS AND SYMBOLS IS AVAILABLE ON REQUEST



(SHEEP MOUNTAIN)  
4460 1 SE