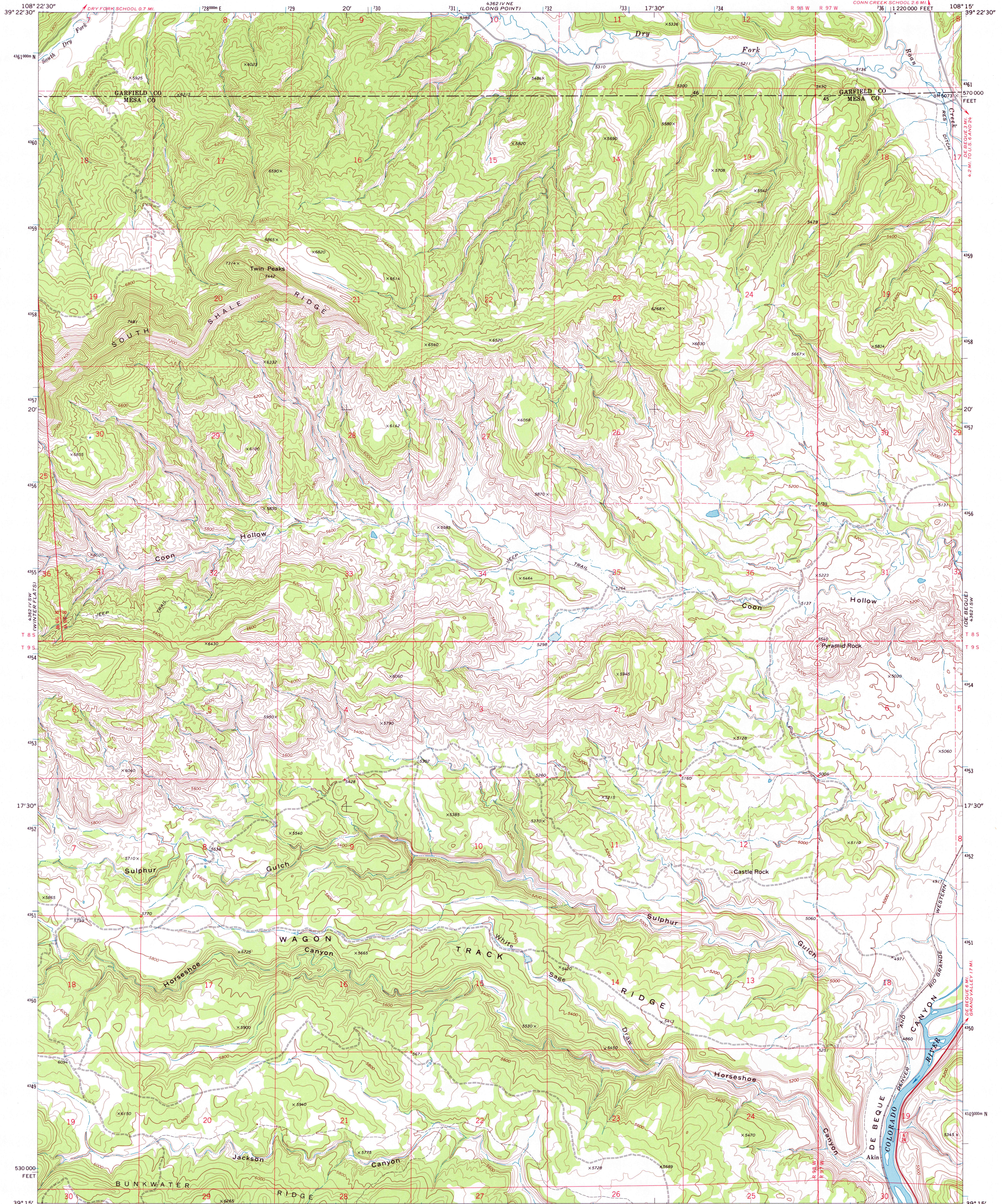
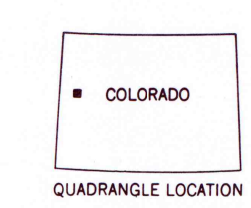
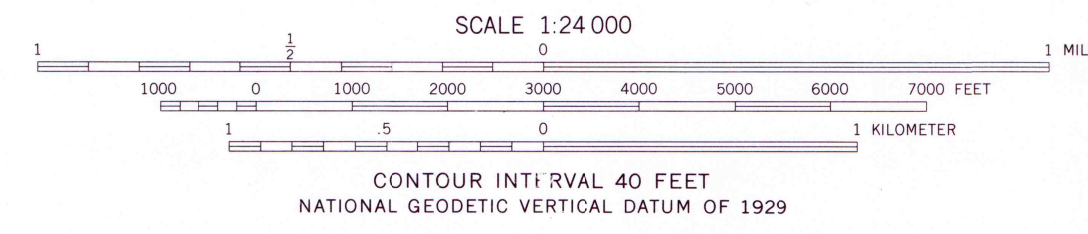
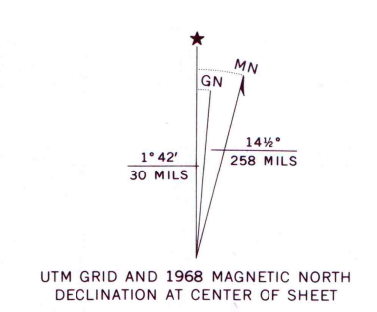




4362 IV NW
RED IN FACILE



Mapped, edited, and published by the Geological Survey
Control by USGS and USC&GS
Topography by photogrammetric methods from aerial
photographs taken 1967. Field checked 1968
Polyconic projection. 1927 North American datum
10,000-foot grid based on Colorado coordinate system,
central zone
1000-meter Universal Transverse Mercator grid ticks,
zone 12, shown in blue
Fine red dashed lines indicate selected fence lines
To place on the predicted North American Datum 1983
move the projection lines 6 meters north and
56 meters east as shown by dashed corner ticks
Map photoinspected 1973
No major culture or drainage changes observed



ROAD CLASSIFICATION
Primary highway, all weather, Light-duty road, all weather,
hard surface improved surface
Unimproved road, fair or dry
weather
U.S. Route

WAGON TRACK RIDGE, COLO.

N3915—W10815/7.5

1968
PHOTOINSPECTED 1973
DMA 4362 IV SE—SERIES V877

THIS MAP COMPLIES WITH NATIONAL MAP ACCURACY STANDARDS
FOR SALE BY U. S. GEOLOGICAL SURVEY, DENVER, COLORADO 80225, OR RESTON, VIRGINIA 22092
A FOLDER DESCRIBING TOPOGRAPHIC MAPS AND SYMBOLS IS AVAILABLE ON REQUEST