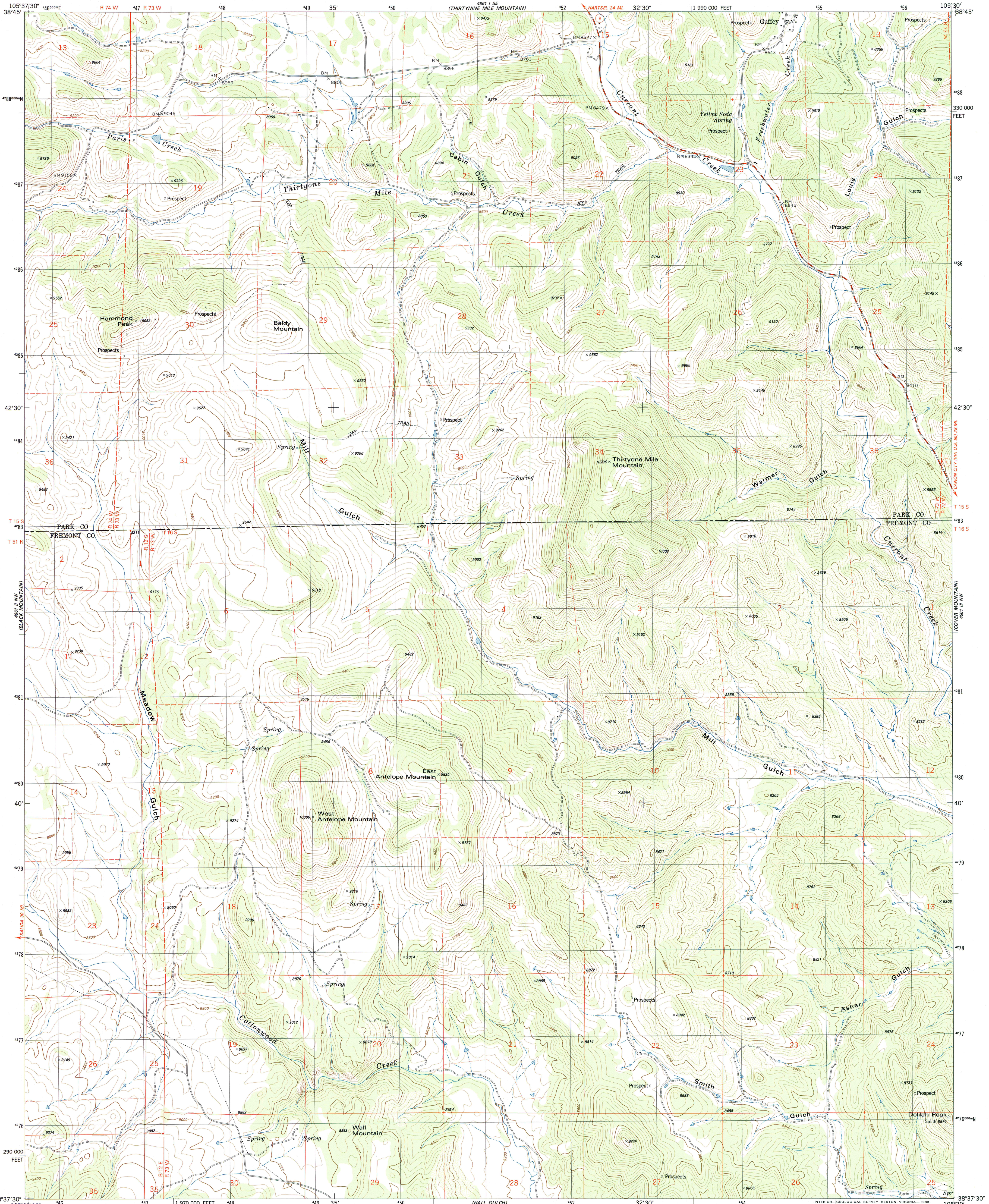




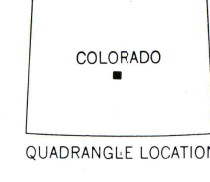
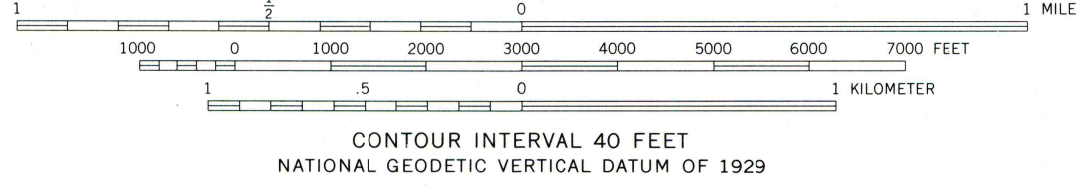
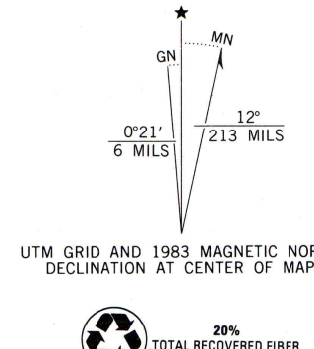
U.S. DEPARTMENT OF THE INTERIOR  
U.S. GEOLOGICAL SURVEY

THIRTYONE MILE MOUNTAIN QUADRANGLE  
COLORADO  
7.5 MINUTE SERIES (TOPOGRAPHIC)  
NE/4 BLACK MOUNTAIN 15' QUADRANGLE



Mapped, edited, and published by the Geological Survey

Control by USGS and NOS/NOAA  
Topography by photogrammetric methods from aerial photographs taken 1975. Field checked 1976. Map edited 1983  
Projection and 10,000-foot grid ticks: Colorado coordinate system, central zone (Lambert conformal conic) 1000-meter Universal Transverse Mercator grid, zone 13 1927 North American datum  
To place on the predicted North American Datum 1983 move the projection lines 4 meters north and 49 meters east as shown by dashed corner ticks  
Fine red dashed lines indicate selected fence lines



**ROAD CLASSIFICATION**  
 Primary highway, hard surface ——— Light-duty road, hard or improved surface ———  
 Secondary highway, hard surface ——— Unimproved road ———  
 Interstate Route U.S. Route State Route

**THIRTYONE MILE MOUNTAIN, COLO.**  
 NE/4 BLACK MOUNTAIN 15' QUADRANGLE  
 N3837.5-W105307.5  
 1983  
 DMA 4861 II NE-SERIES V877

THIS MAP COMPLIES WITH NATIONAL MAP ACCURACY STANDARDS  
 FOR SALE BY U.S. GEOLOGICAL SURVEY, P.O. BOX 25286, DENVER, COLORADO 80225  
 A FOLDER DESCRIBING TOPOGRAPHIC MAPS AND SYMBOLS IS AVAILABLE ON REQUEST

