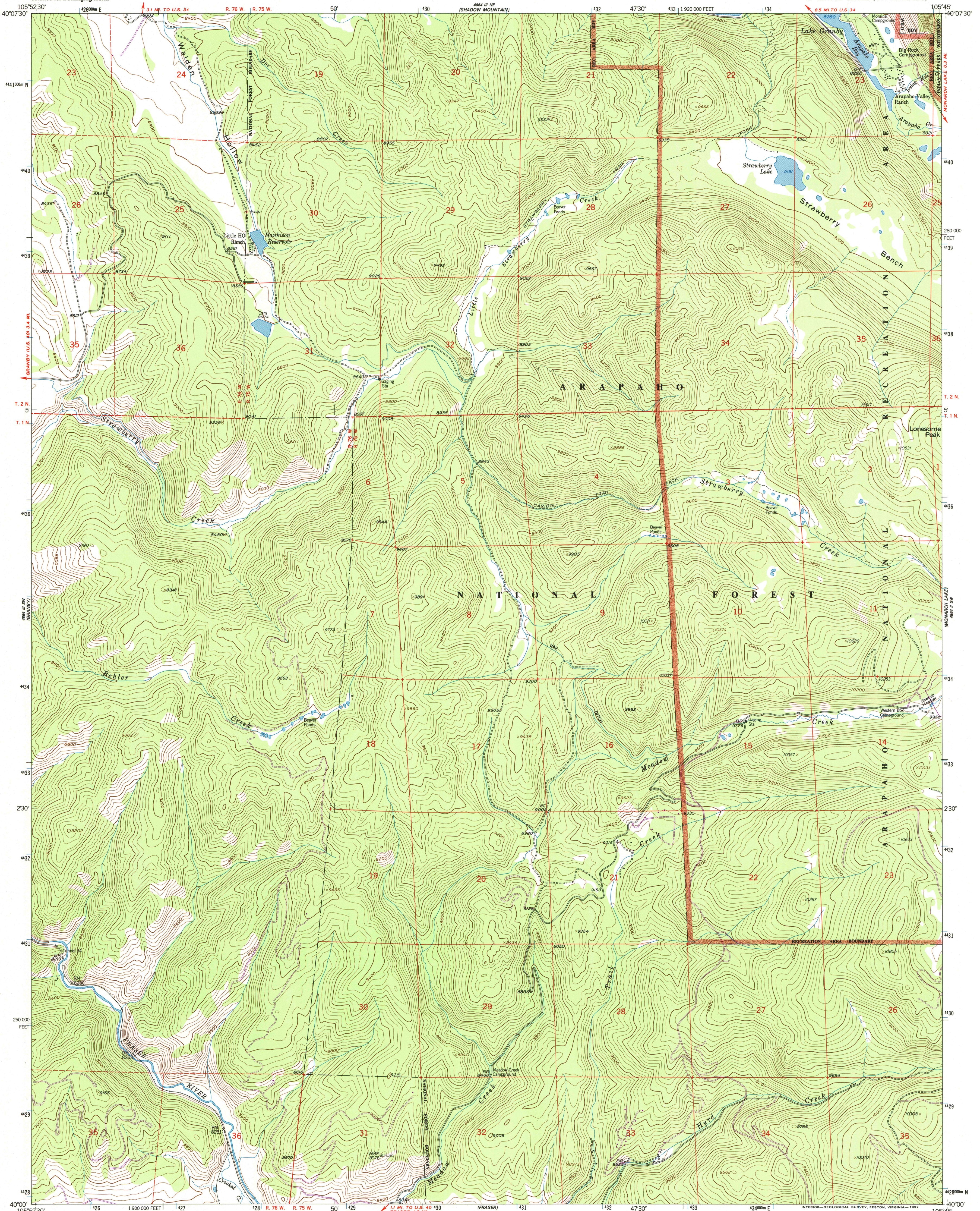




U.S. DEPARTMENT OF THE INTERIOR  
U.S. GEOLOGICAL SURVEY

STRAWBERRY LAKE QUADRANGLE  
COLORADO—GRAND CO.  
7.5 MINUTE SERIES (TOPOGRAPHIC)



Mapped, edited, and published by the Geological Survey

Control by USGS and NOS/NOAA

Topography by photogrammetric methods from aerial photographs taken 1953. Field checked 1958

Polyconic projection. 1927 North American Datum

10,000-foot grid based on Colorado coordinate system, north zone

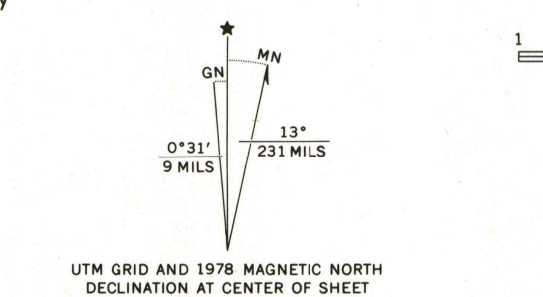
1000-meter Universal Transverse Mercator grid ticks, zone 13, shown in blue

The difference between 1927 North American Datum and North American Datum of 1983 (NAD 83) for 7.5 minute intersections is given in USGS Bulletin 1675. The NAD 83 is shown by dashed corner ticks

Unchecked elevations are shown in brown

Dashed land lines indicate approximate locations

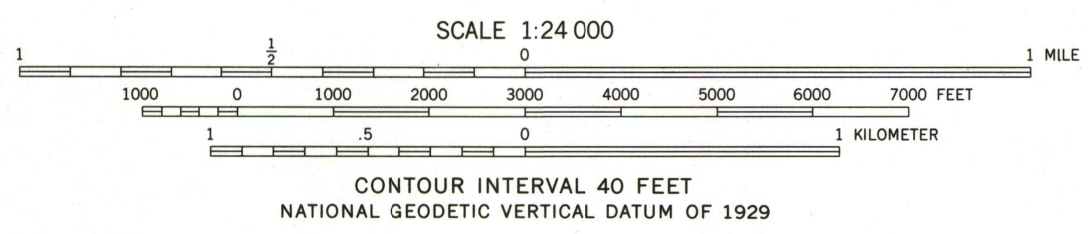
Certain land lines omitted in T.1N.-R.76W. because of insufficient data



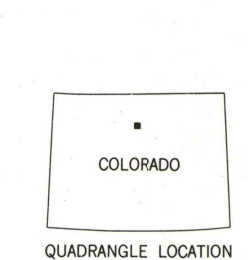
UTM GRID AND 1978 MAGNETIC NORTH DECLINATION AT CENTER OF SHEET

20% TOTAL RECOVERED FIBER

There may be private inholdings within the boundaries of the National or State reservations shown on this map



THIS MAP COMPLIES WITH NATIONAL MAP ACCURACY STANDARDS  
FOR SALE BY U.S. GEOLOGICAL SURVEY, P.O. BOX 25286, DENVER, COLORADO 80225  
A FOLDER DESCRIBING TOPOGRAPHIC MAPS AND SYMBOLS IS AVAILABLE ON REQUEST



ROAD CLASSIFICATION  
Light-duty ——— Unimproved dirt - - - - -

STRAWBERRY LAKE, COLO.  
40106-A7-TF-024

1958  
PHOTOREVISED 1978  
DMA 4864 III SE-SERIES V877

