

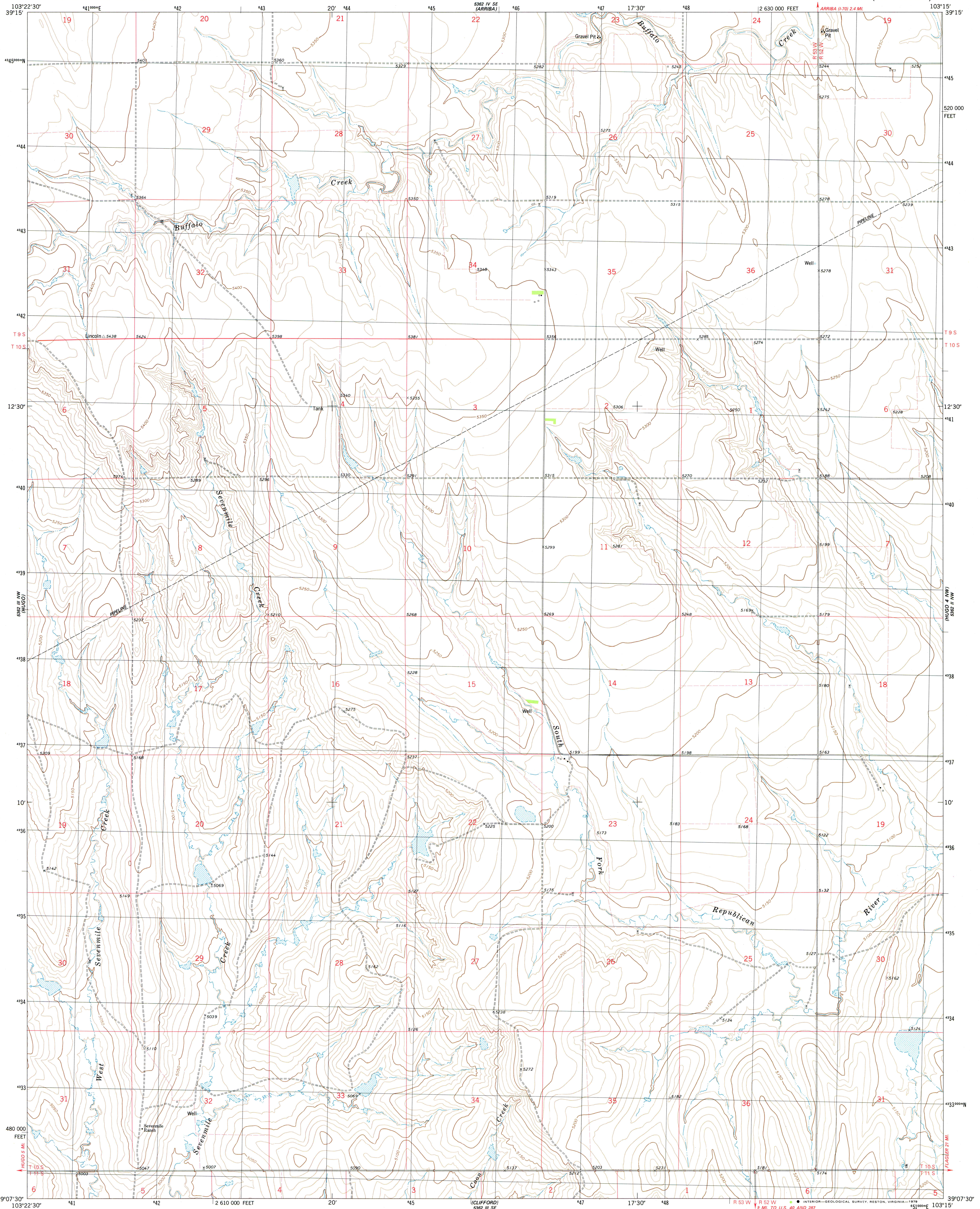
(SEE IV SW
CORNER EAST)

UNITED STATES
DEPARTMENT OF THE INTERIOR
GEOLOGICAL SURVEY

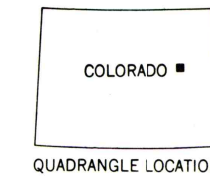
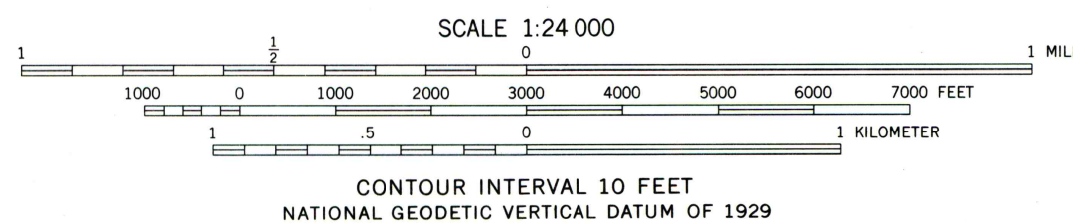
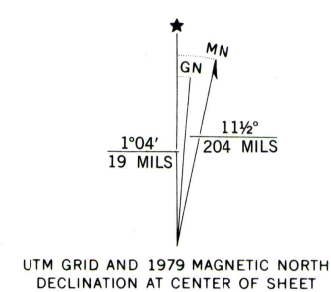


SEVENMILE RANCH QUADRANGLE
COLORADO—LINCOLN CO.
7.5 MINUTE SERIES (TOPOGRAPHIC)

(SEE IV SW
CORNER SW)



Mapped, edited, and published by the Geological Survey
Control by USGS and NOS/NOAA
Topography by photogrammetric methods from aerial photographs
taken 1973. Field checked 1975. Map edited 1979
Projection and 10,000-foot grid ticks: Colorado
coordinate system, central zone (Lambert conformal conic)
1000-meter Universal Transverse Mercator grid, zone 13
1927 North American datum
Fine red dashed lines indicate selected fence lines



ROAD CLASSIFICATION

Primary highway, hard surface	Light-duty road, hard or improved surface
Secondary highway, hard surface	Unimproved road
Interstate Route	U. S. Route
	State Route

SEVENMILE RANCH, COLO.
N3907.5—W10315/7.5

1979

DMA 5362 III NE—SERIES V877

THIS MAP COMPLIES WITH NATIONAL MAP ACCURACY STANDARDS
FOR SALE BY U. S. GEOLOGICAL SURVEY, DENVER, COLORADO 80225, OR RESTON, VIRGINIA 22092
A FOLDER DESCRIBING TOPOGRAPHIC MAPS AND SYMBOLS IS AVAILABLE ON REQUEST