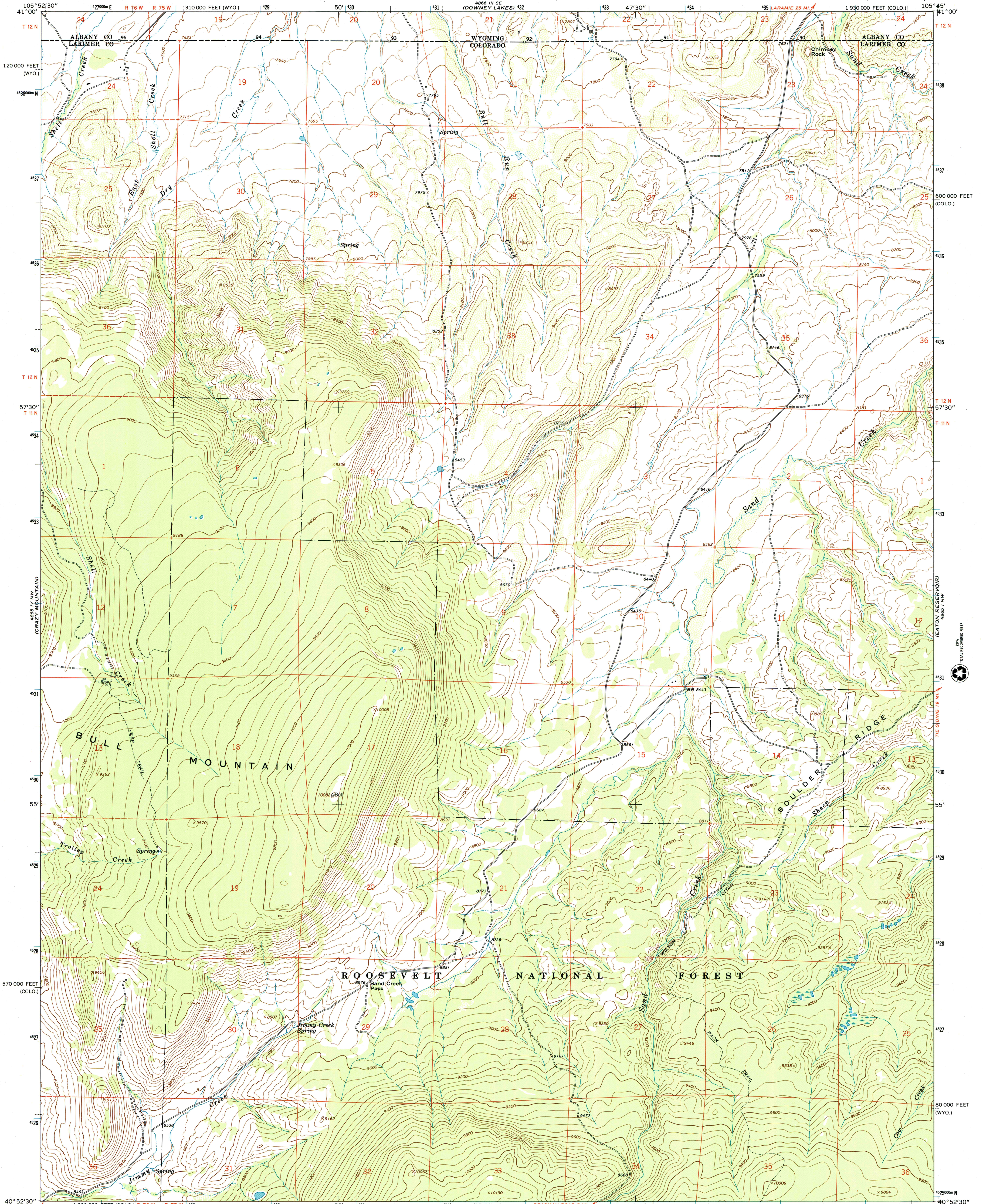


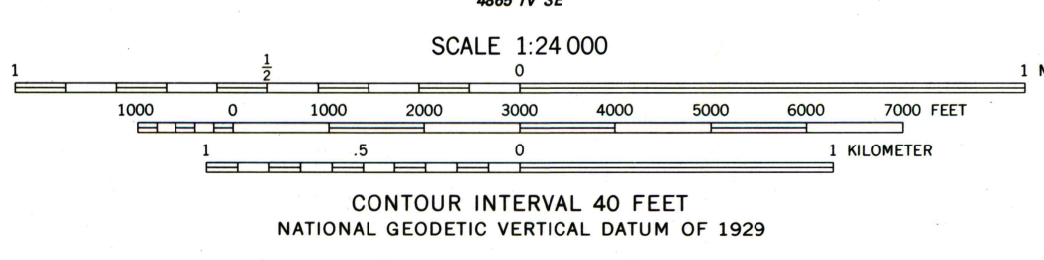
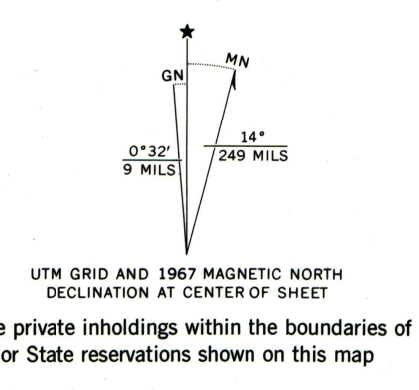


U.S. DEPARTMENT OF THE INTERIOR
U.S. GEOLOGICAL SURVEY

SAND CREEK PASS QUADRANGLE
COLORADO-WYOMING
7.5 MINUTE SERIES (TOPOGRAPHIC)



Mapped, edited, and published by the Geological Survey
Control by USGS and USC&GS
Topography by photogrammetric methods from aerial photographs taken 1966. Field checked 1967
Polyconic projection. 1927 North American datum 10,000-foot grids based on Colorado coordinate system, north zone and Wyoming coordinate system, east zone 1000-meter Universal Transverse Mercator grid ticks, zone 13, shown in blue
Fine red dashed lines indicate selected fence lines
T. 12 N., Sixth Principal Meridian, is duplicated in Colorado and Wyoming



ROAD CLASSIFICATION
Light-duty ————— Unimproved dirt - - - - -

SAND CREEK PASS, COLO.-WYO.
N4052.5-W10545.7.5
1967
DMA 4885 IV NE-SERIES V877

THIS MAP COMPLIES WITH NATIONAL MAP ACCURACY STANDARDS
FOR SALE BY U.S. GEOLOGICAL SURVEY, P.O. BOX 25286, DENVER, COLORADO 80225
A FOLDER DESCRIBING TOPOGRAPHIC MAPS AND SYMBOLS IS AVAILABLE ON REQUEST

To place on the predicted North American Datum 1983
move the projection lines 6 meters north and
49 meters east as shown by dashed corner ticks

4885 II SW JOHNSON RANCH

