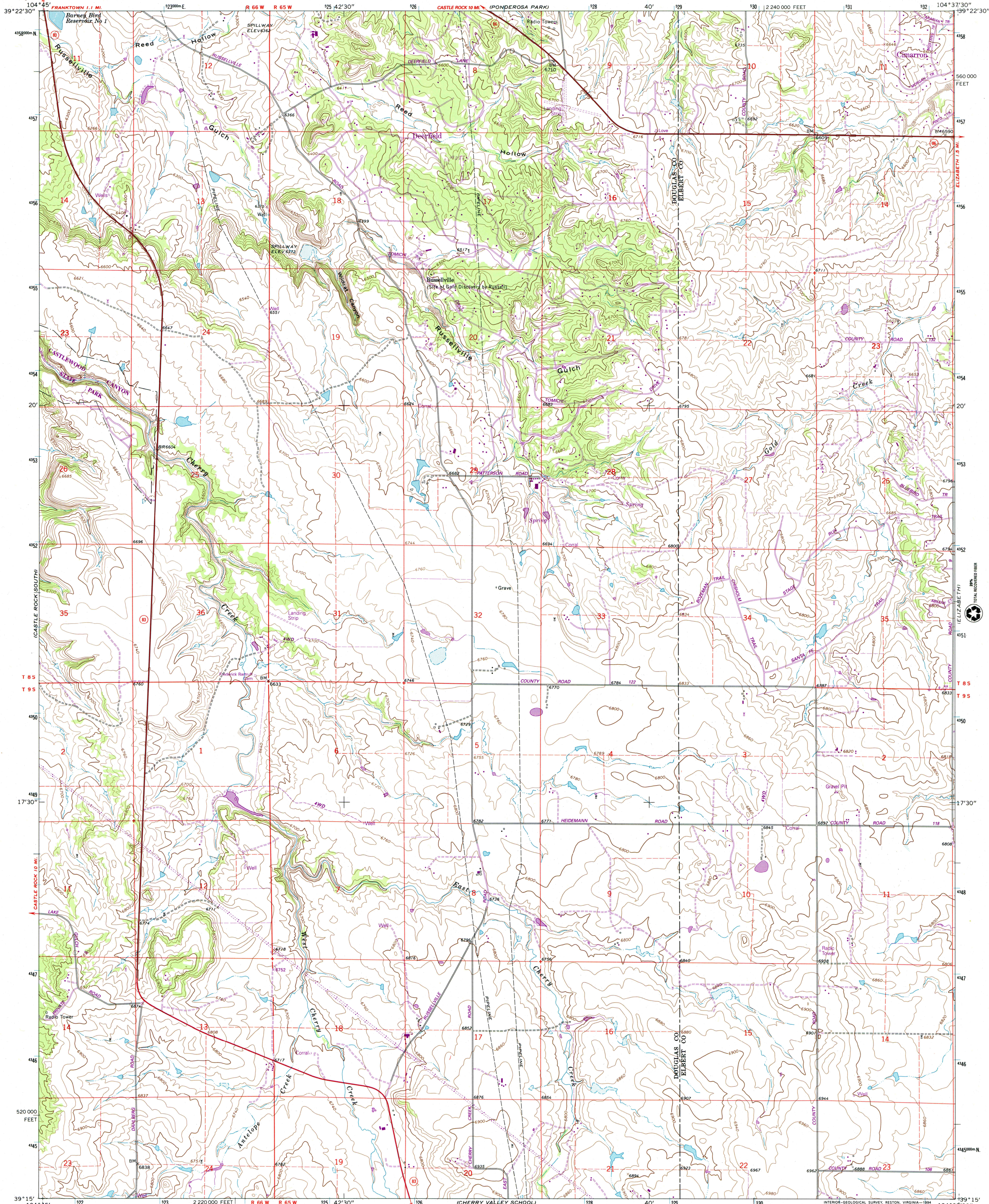




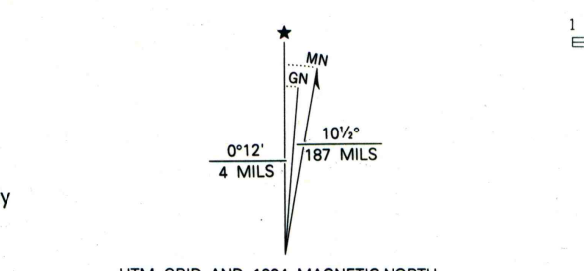
U.S. DEPARTMENT OF THE INTERIOR  
U.S. GEOLOGICAL SURVEY

RUSSELLVILLE GULCH QUADRANGLE  
COLORADO  
7.5 MINUTE SERIES (TOPOGRAPHIC)

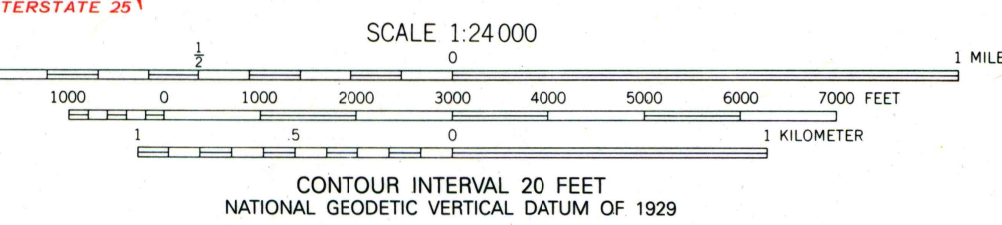


Produced by the United States Geological Survey in cooperation with the Inter-County Regional Planning Commission  
Control by USGS and NOS/NOAA  
Compiled from aerial photographs taken 1966. Revisions shown in purple compiled from aerial photographs taken 1988 and other sources and have been field checked. Map edited 1994  
Conflicts may exist between some updated features and previously mapped contours

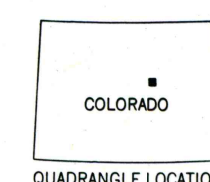
North American Datum of 1927 (NAD 27). Projection and 10,000-foot ticks: Colorado Coordinate System, central zone (Lambert Conformal Conic)  
Blue 1000-meter Universal Transverse Mercator ticks, zone 13  
North American Datum of 1983 (NAD 83) is shown by dashed corner ticks. The values of the shift between NAD 27 and NAD 83 for 7.5-minute intersections are obtainable from National Geodetic Survey NADCON software



There may be private holdings within the boundaries of the National or State reservations shown on this map



THIS MAP COMPLIES WITH NATIONAL MAP ACCURACY STANDARDS FOR SALE BY U.S. GEOLOGICAL SURVEY, P.O. BOX 25286, DENVER, COLORADO 80225  
A FOLDER DESCRIBING TOPOGRAPHIC MAPS AND SYMBOLS IS AVAILABLE ON REQUEST



ROAD CLASSIFICATION

Primary highway, hard surface	Light-duty road, hard or improved surface
Secondary highway, hard surface	Unimproved road
Interstate Route	U. S. Route
	State Route

RUSSELLVILLE GULCH, COLO.  
39104-C6-TF-024

1986  
REVISED 1994  
DMA 5062 1 SW-SERIES V877

