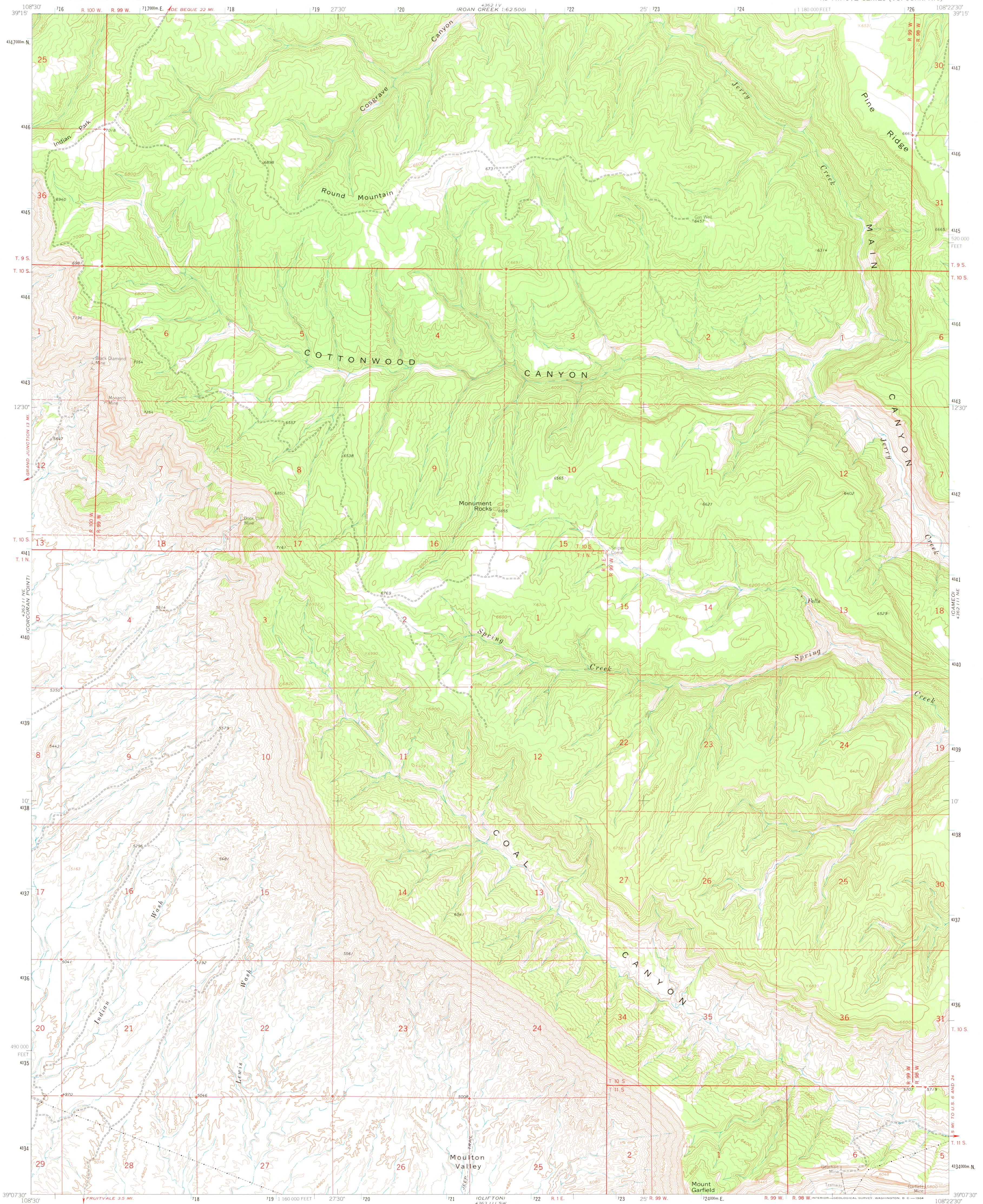
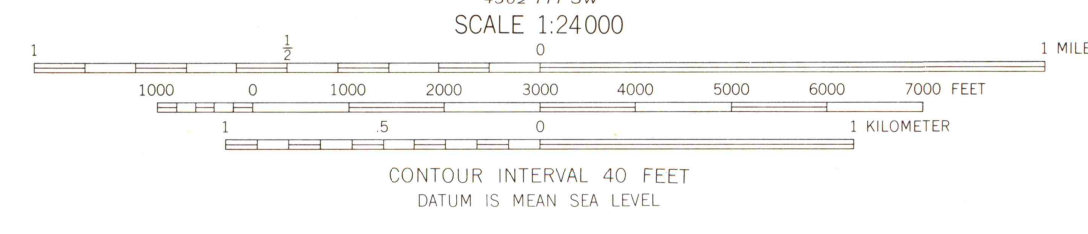
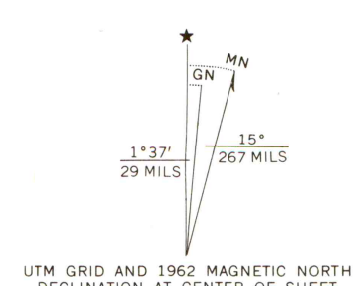


4362 11 N
IROAN CREEK
1:62 500



Mapped, edited, and published by the Geological Survey
Control by USGS and USC&GS
Topography by photogrammetric methods from aerial photographs taken 1956. Field checked 1962
Polyconic projection 1927 North American datum
10,000-foot grid based on Colorado coordinate system, central zone 1000-meter Universal Transverse Mercator grid ticks, zone 12, shown in blue
Certain land lines are omitted because of insufficient data



ROAD CLASSIFICATION
Unimproved dirt -----

THIS MAP COMPLIES WITH NATIONAL MAP ACCURACY STANDARDS
FOR SALE BY U.S. GEOLOGICAL SURVEY, DENVER 25, COLORADO OR WASHINGTON 25, D.C.
A FOLDER DESCRIBING TOPOGRAPHIC MAPS AND SYMBOLS IS AVAILABLE ON REQUEST

ROUND MOUNTAIN, COLO.
N3907.5 - W10822.5/7.5
1962

AMS 4362 111 NW-SERIES V877

GRAND JUNCTION
4362 11 NE

GRAND JUNCTION
4362 11 SE