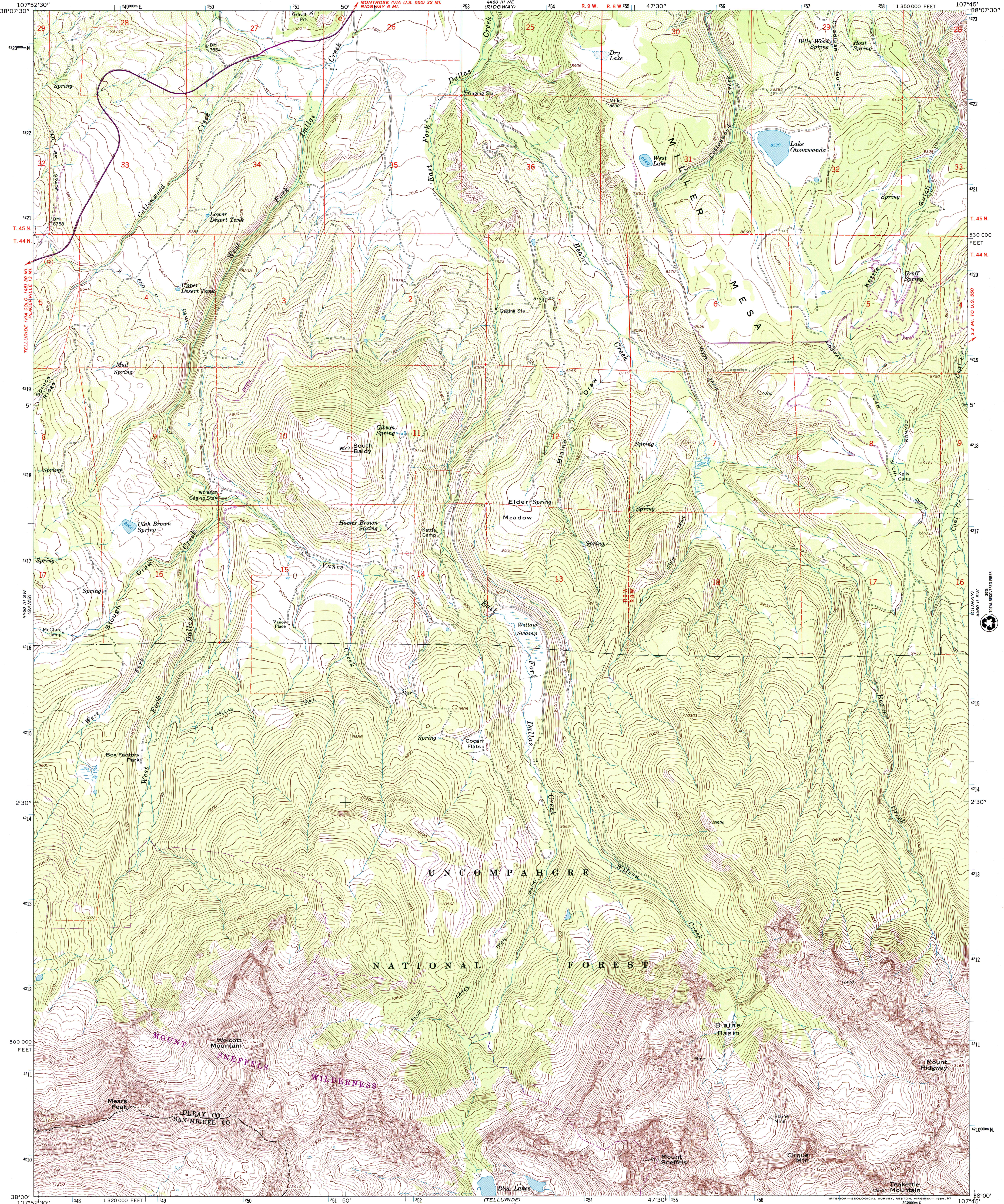




U.S. DEPARTMENT OF THE INTERIOR  
U.S. GEOLOGICAL SURVEY

MOUNT SNEFFELS QUADRANGLE  
COLORADO  
7.5 MINUTE SERIES (TOPOGRAPHIC)

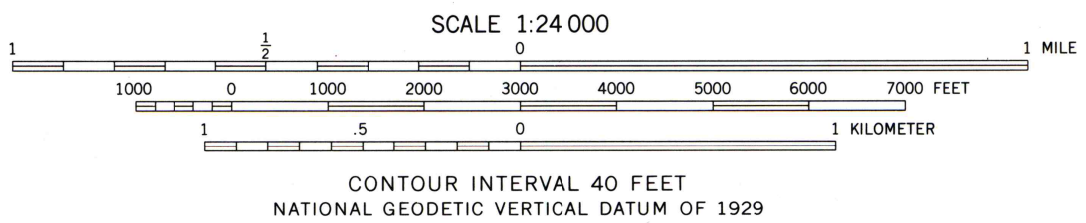
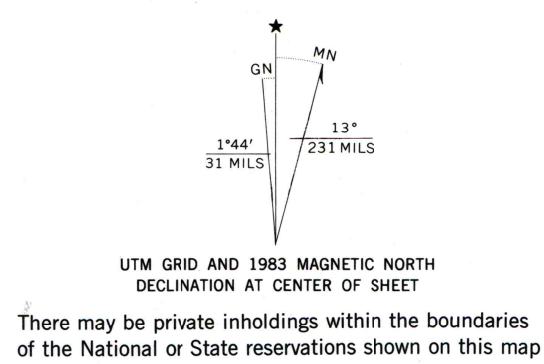


Mapped, edited, and published by the Geological Survey

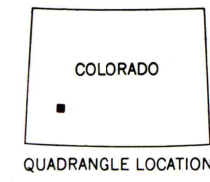
Control by USGS and NOS/NOAA  
Topography by photogrammetric methods from aerial photographs taken 1965. Field checked 1967

Polyconic projection. 1927 North American Datum  
10,000-foot grid based on Colorado coordinate system, south zone  
1000-meter Universal Transverse Mercator grid ticks, zone 13, shown in blue

Fine red dashed lines indicate selected fence lines  
Certain land lines are omitted because of insufficient data  
To place on the predicted North American Datum 1983 move the projection lines 4 meters north and 55 meters east as shown by dashed corner ticks



THIS MAP COMPLIES WITH MAP ACCURACY STANDARDS FOR SALE BY U.S. GEOLOGICAL SURVEY  
P.O. BOX 25286, DENVER, COLORADO 80225  
A FOLDER DESCRIBING TOPOGRAPHIC MAPS AND SYMBOLS IS AVAILABLE ON REQUEST



Revisions shown in purple and woodland compiled from aerial photographs taken 1978 and other source data  
This information not field checked. Map edited 1983

ROAD CLASSIFICATION  
Secondary highway, all weather, Light-duty road, all weather, hard surface  
Unimproved road, fair or dry weather

State Route  
Primary highway, all weather, hard surface

MOUNT SNEFFELS, COLO.  
38107-A7-TF-024

1967  
PHOTOREVISED 1983  
DMA 4460 III SE—SERIES V877

