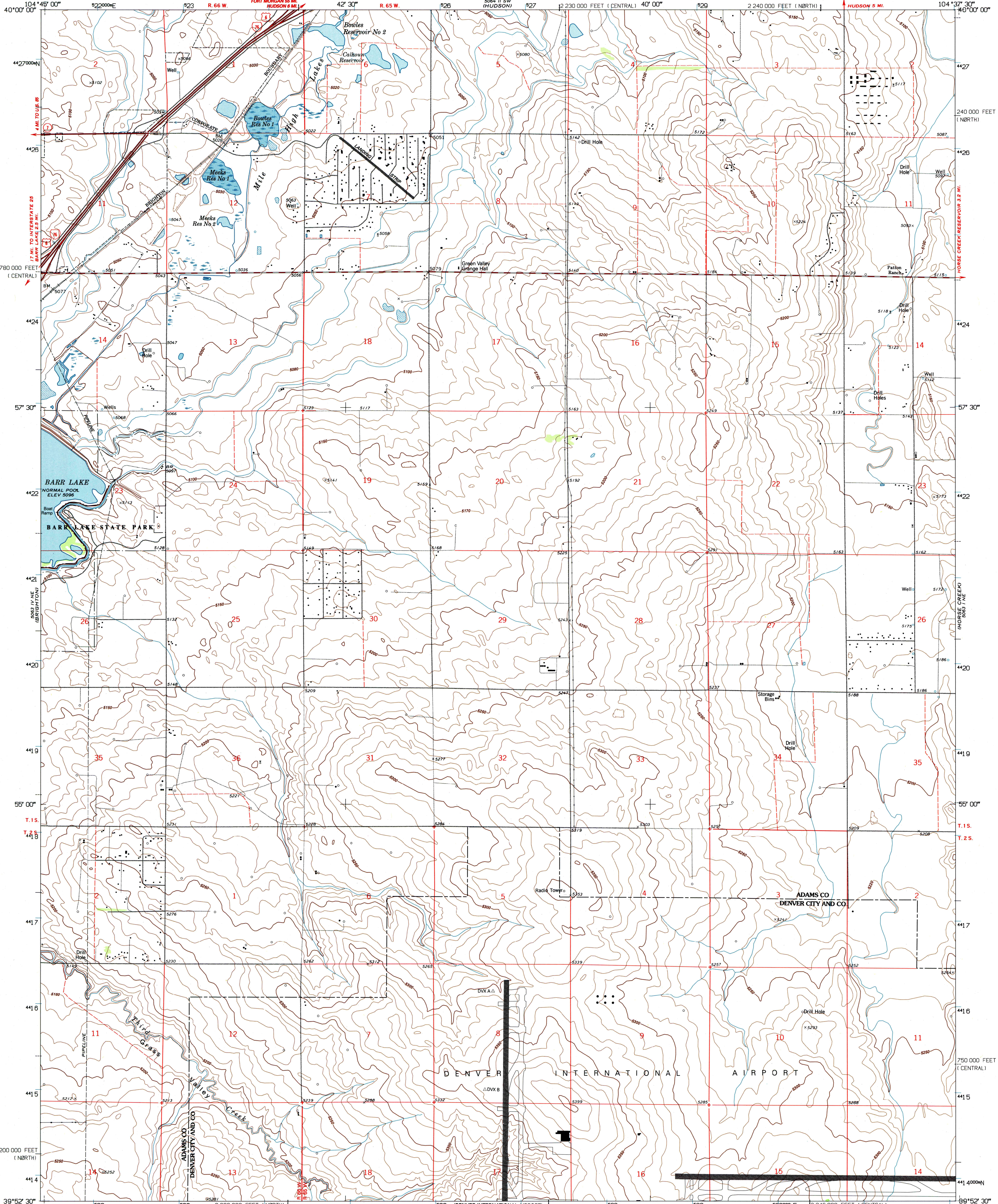




U.S. DEPARTMENT OF THE INTERIOR
U.S. GEOLOGICAL SURVEY

MILE HIGH LAKES QUADRANGLE
COLORADO
7.5 MINUTE SERIES (TOPOGRAPHIC)

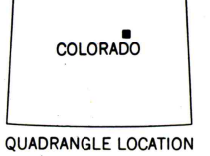
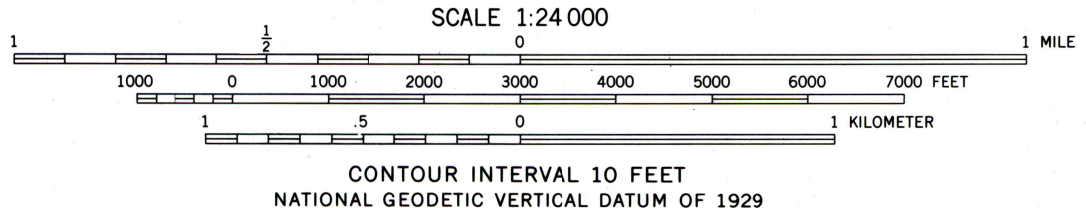
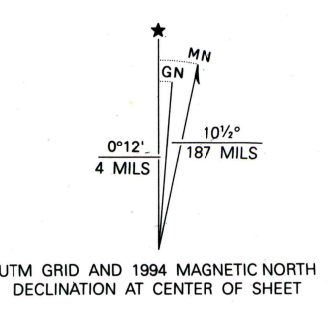


Produced by the United States Geological Survey

Control by USGS and NOS/NOAA
Compiled from aerial photographs taken 1954 and 1955. Revised from aerial photographs taken 1988 and other sources. Field checked 1996. Map edited 1994. Contours and land elevations have not been revised and may conflict with other content.

North American Datum of 1927 (NAD 27). Projection and blue 1000-meter Universal Transverse Mercator ticks, zone 13 10 000-foot ticks: Colorado Coordinate System, north and central zones. North American Datum of 1983 (NAD 83) is shown by dashed corner ticks. The values of the shift between NAD 27 and NAD 83 for 7.5-minute intersections are obtainable from National Geodetic Survey NADCON software.

There may be private inholdings within the boundaries of the National or State reservations shown on this map. Fine red dashed lines indicate selected fence and field lines where generally visible on aerial photographs. This information is unchecked.



ROAD CLASSIFICATION

Heavy-duty	Light-duty
Medium-duty	Unimproved dirt
Interstate Route	U.S. Route
	State Route

MILE HIGH LAKES, CO

39104-H6-TF-024

1966

REVISED 1994

DMA 5063 1 NW-SERIES V877

THIS MAP COMPLIES WITH NATIONAL MAP ACCURACY STANDARDS
FOR SALE BY U.S. GEOLOGICAL SURVEY, P.O. BOX 252266, DENVER, COLORADO 80226
A FOLDER DESCRIBING TOPOGRAPHIC MAPS AND SYMBOLS IS AVAILABLE ON REQUEST

