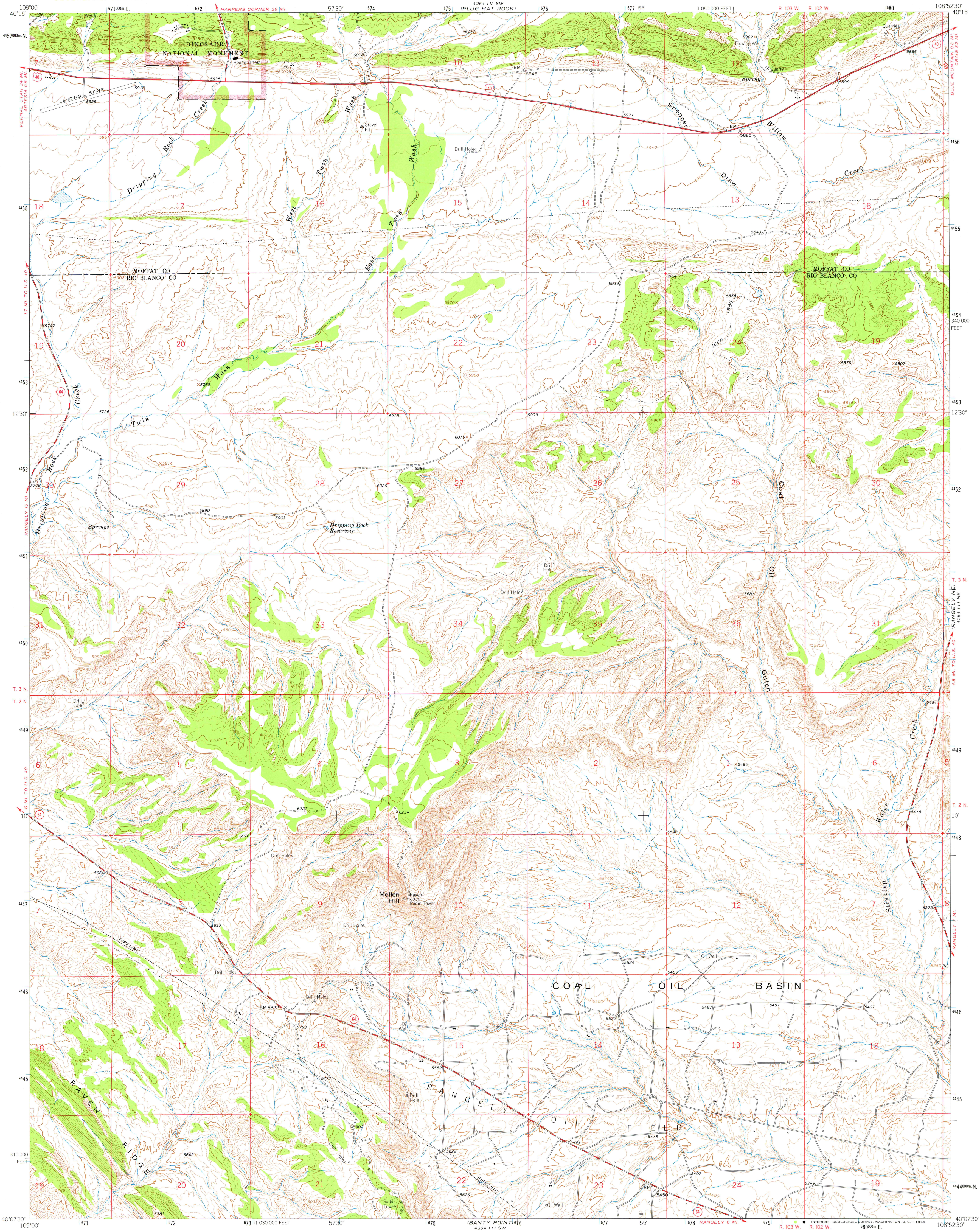


4264 1 V SW  
(PLUG HAT ROCK)

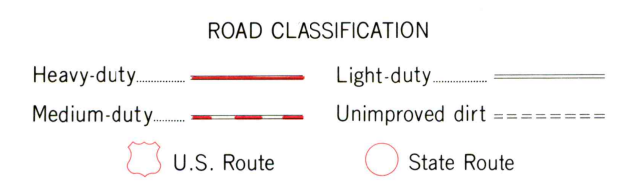
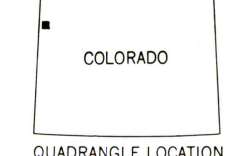
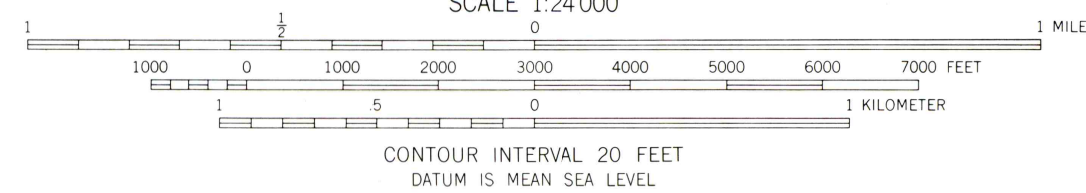
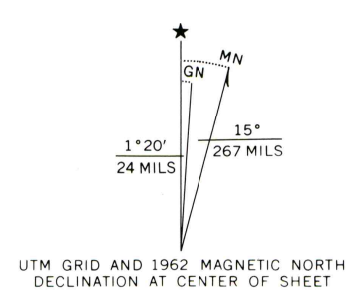


Mapped, edited, and published by the Geological Survey

Control by USGS and USC&GS

Topography by photogrammetric methods from aerial photographs taken 1961 and 1962. Field checked 1962

Polyconic projection. 1927 North American datum. 10,000-foot grid based on Colorado coordinate system, north zone. 1000 meter Universal Transverse Mercator grid ticks, zone 12, shown in blue



THIS MAP COMPLIES WITH NATIONAL MAP ACCURACY STANDARDS  
FOR SALE BY U.S. GEOLOGICAL SURVEY, DENVER 25, COLORADO OR WASHINGTON 25, D. C.  
A FOLDER DESCRIBING TOPOGRAPHIC MAPS AND SYMBOLS IS AVAILABLE ON REQUEST

MELLEN HILL, COLO.  
N4007.5 W10852.5/7.5

1962  
AMS 4264 111 NW-SERIES V877

4264 1 V SW  
(PLUG HAT ROCK)