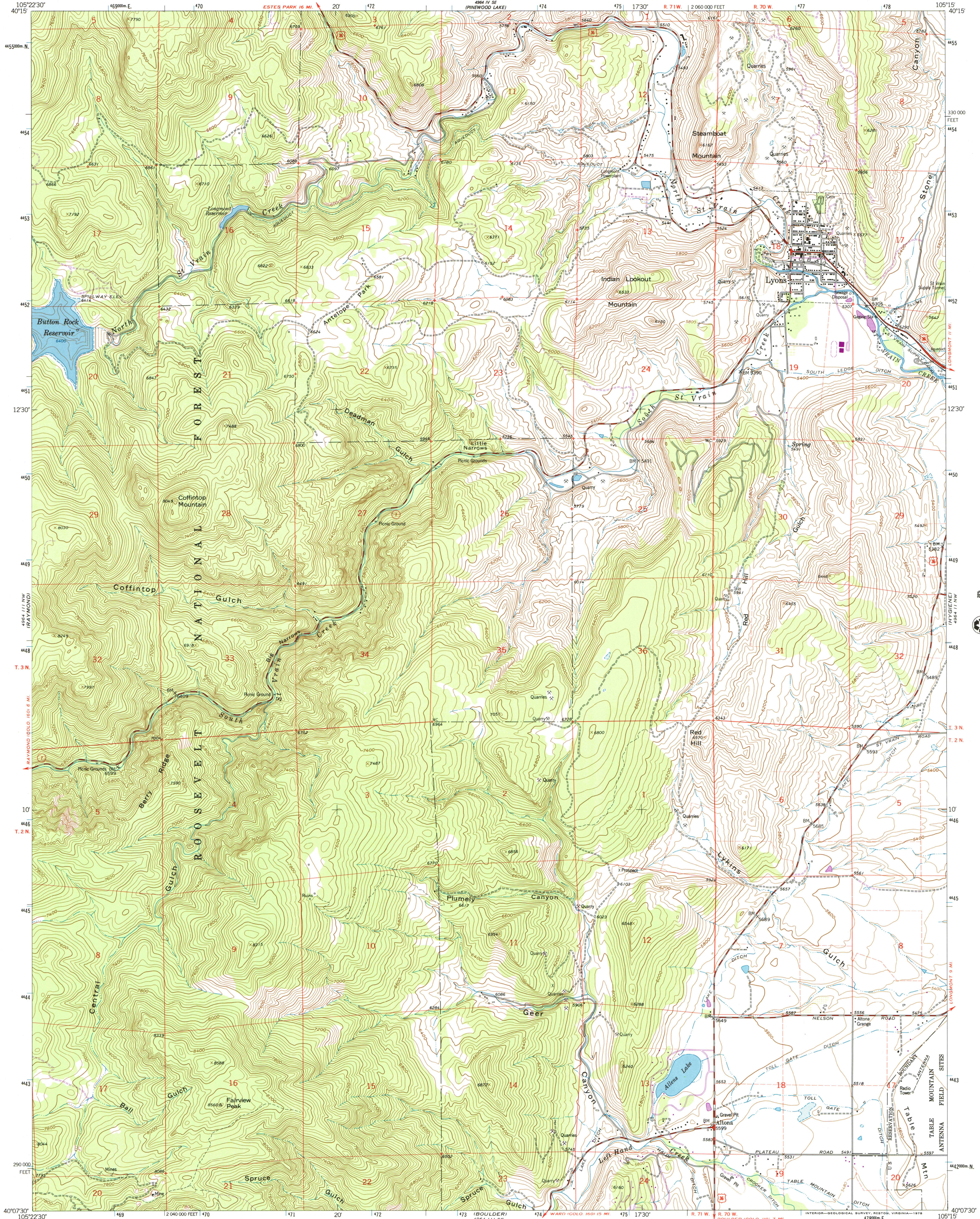




U.S. DEPARTMENT OF THE INTERIOR
U.S. GEOLOGICAL SURVEY

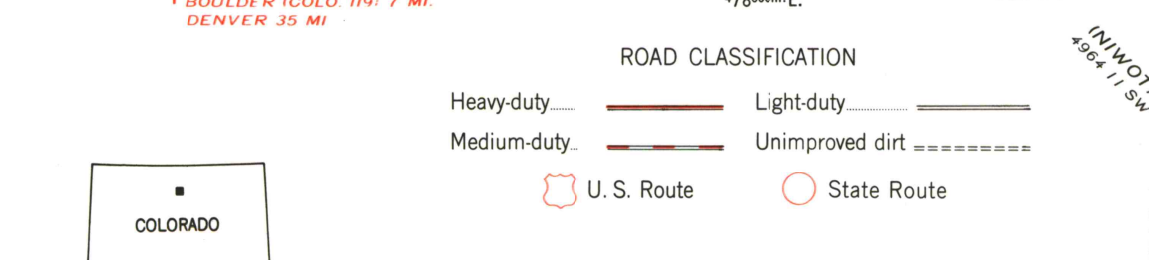
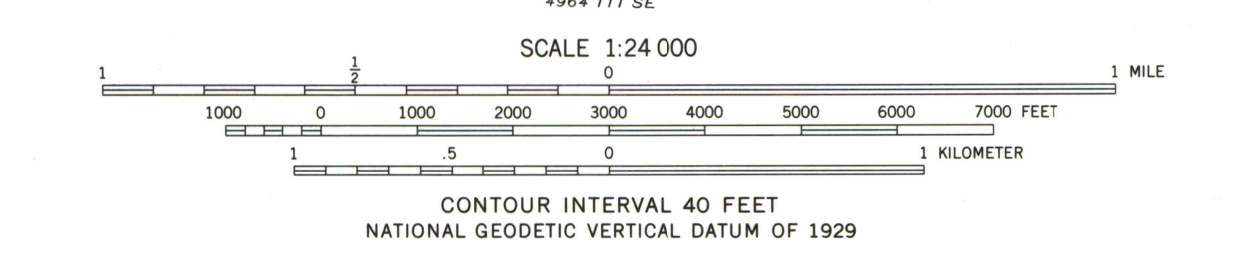
LYONS QUADRANGLE
COLORADO—BOULDER CO.
7.5 MINUTE SERIES (TOPOGRAPHIC)
NE/4 BOULDER 15 QUADRANGLE

4964 111 NW
CANYON LAKE RESERVOIR



Mapped, edited, and published by the Geological Survey
Revised in cooperation with the Inter-County
Regional Planning Commission
Control by USGS and NOS/NOAA
Topography by photogrammetric methods from aerial photographs
taken 1953. Field checked 1957. Revised from aerial
photographs taken 1967. Field checked 1968
Polyconic projection. 1927 North American datum
10,000-foot grid based on Colorado coordinate system,
north zone
1000-meter Universal Transverse Mercator grid ticks,
zone 13, shown in blue
Fine red dashed lines indicate selected fence lines
Areas covered by dashed light-blue pattern are subject
to controlled inundation

Revisions shown in purple compiled from aerial
photographs taken 1976. Map edited 1978
This information not field checked



QUADRANGLE LOCATION
COLORADO
LYONS, COLO.
NE/4 BOULDER 15 QUADRANGLE
N4007.5-W10515/7.5
1968
PHOTOREVISED 1978
AMS 4964 111 NE—SERIES V877

