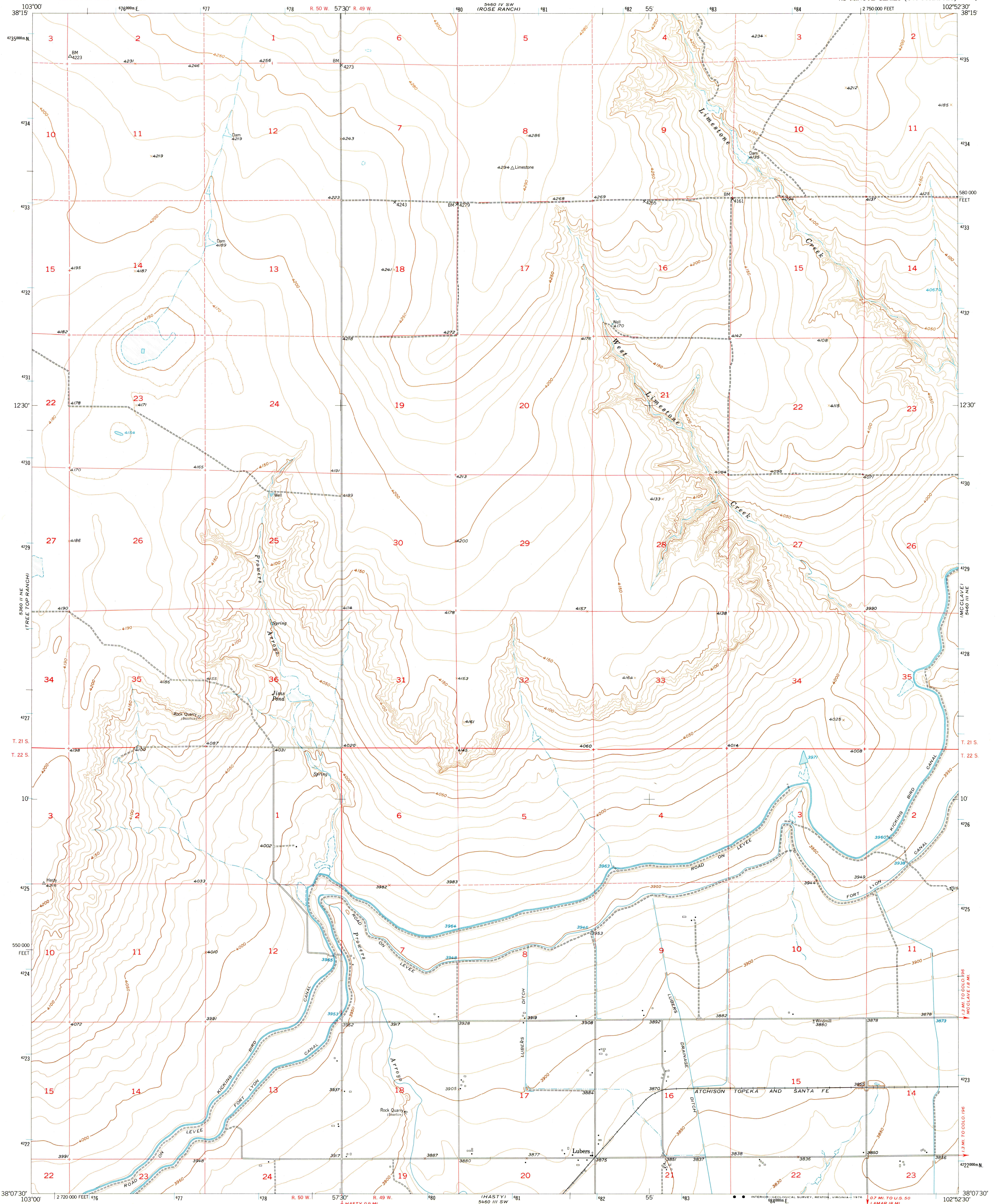
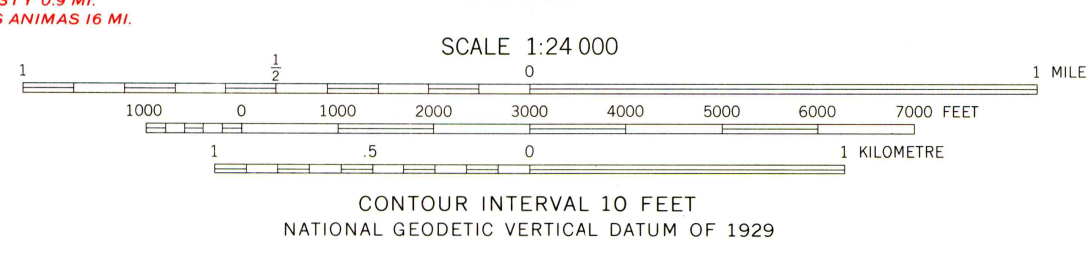
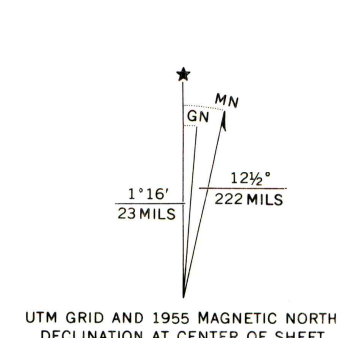


1/4 SEC. 24 NE  
1/4 SEC. 25 NE  
1/4 SEC. 26 NE  
1/4 SEC. 27 NE  
1/4 SEC. 28 NE  
1/4 SEC. 29 NE  
1/4 SEC. 30 NE  
1/4 SEC. 31 NE  
1/4 SEC. 32 NE  
1/4 SEC. 33 NE  
1/4 SEC. 34 NE  
1/4 SEC. 35 NE



1/4 SEC. 21 NE  
1/4 SEC. 22 NE  
1/4 SEC. 23 NE  
1/4 SEC. 24 NE  
1/4 SEC. 25 NE  
1/4 SEC. 26 NE  
1/4 SEC. 27 NE  
1/4 SEC. 28 NE  
1/4 SEC. 29 NE  
1/4 SEC. 30 NE  
1/4 SEC. 31 NE  
1/4 SEC. 32 NE  
1/4 SEC. 33 NE  
1/4 SEC. 34 NE  
1/4 SEC. 35 NE

Mapped, edited, and published by the Geological Survey  
Control by USGS and USC&GS  
Culture and drainage in part compiled from aerial photographs  
taken 1947. Topography by planetable surveys 1955  
Polyconic projection. 1927 North American datum  
10,000-foot grid based on Colorado coordinate system,  
south zone  
Dashed land lines indicate approximate locations  
1000-metre Universal Transverse Mercator grid ticks,  
zone 13, shown in blue



ROAD CLASSIFICATION	
Heavy-duty	Light-duty
Medium-duty	Unimproved dirt
U. S. Route	Slate Route

THIS MAP COMPLIES WITH NATIONAL MAP ACCURACY STANDARDS  
FOR SALE BY U. S. GEOLOGICAL SURVEY, DENVER, COLORADO 80225, OR RESTON, VIRGINIA 22092  
A FOLDER DESCRIBING TOPOGRAPHIC MAPS AND SYMBOLS IS AVAILABLE ON REQUEST

LUBERS, COLO.  
N3807.5-W10252.5/7.5  
1955  
AMS 5460 III NW-SERIES 877