

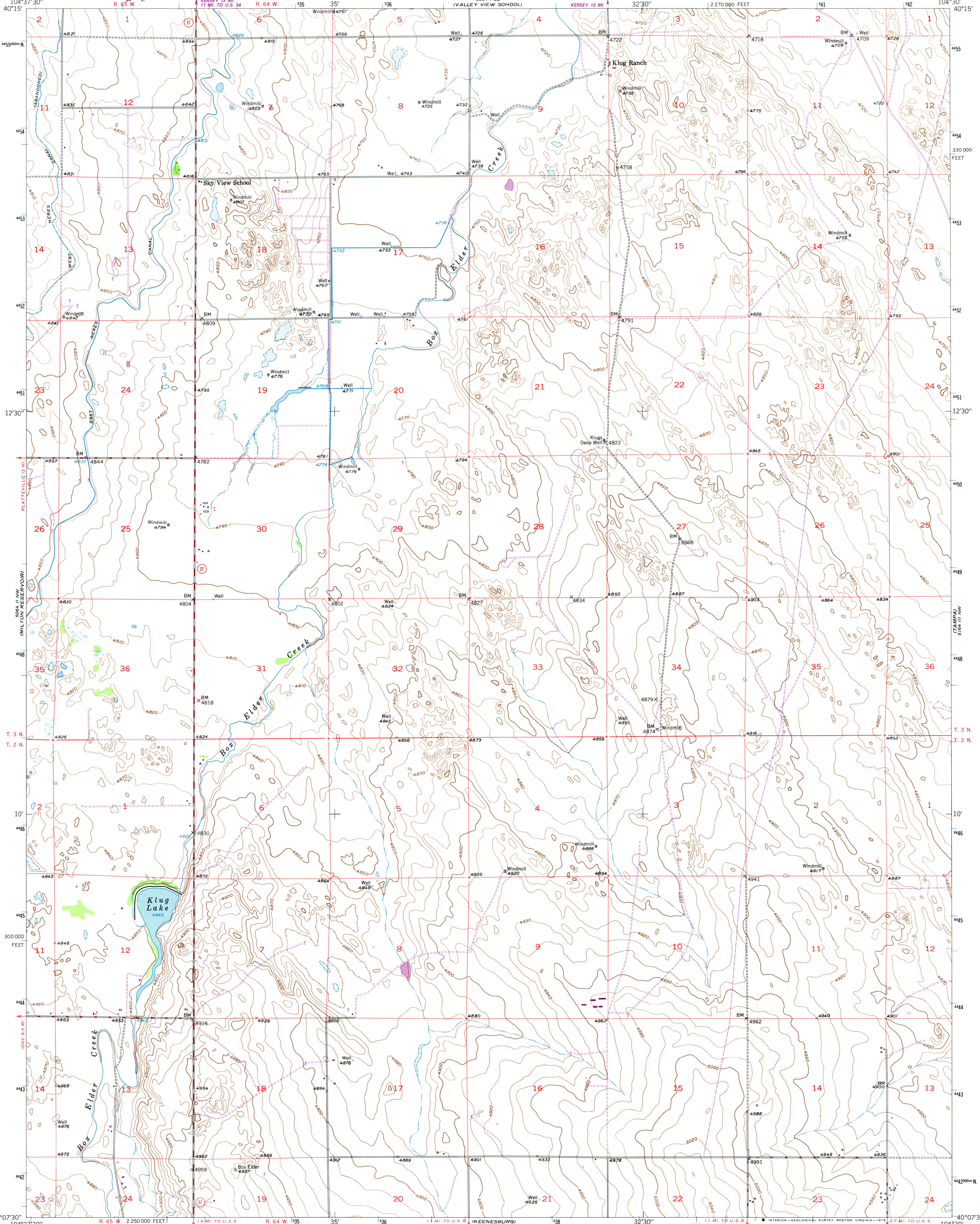
5064 1/2 SE  
U.S. STATE

UNITED STATES  
DEPARTMENT OF THE INTERIOR  
GEOLOGICAL SURVEY

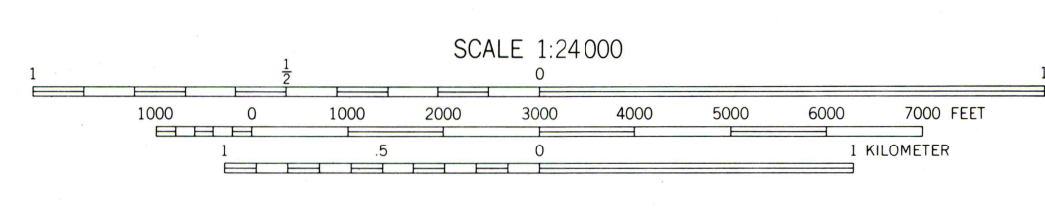
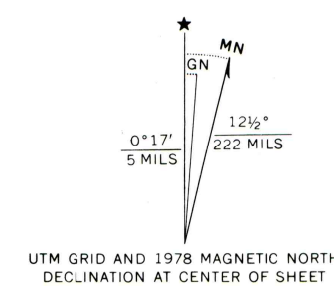


KLUG RANCH QUADRANGLE  
COLORADO-WELD CO.  
7.5 MINUTE SERIES (TOPOGRAPHIC)

5064 1/2 SW  
Hudson

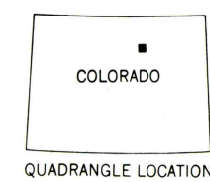


Maped, edited, and published by the Geological Survey as part of the Department of the Interior program for the development of the Missouri River Basin  
Control by USGS and NOS/NOAA  
Culture and drainage in part compiled from aerial photographs taken October 1948 and July-August 1949  
Topography by plane-table methods 1950  
Polyconic projection, 1927 North American datum  
10,000-foot grid based on Colorado coordinate system, north zone  
1000-meter Universal Transverse Mercator grid ticks, zone 13, shown in blue  
Revisions shown in purple compiled from aerial photographs taken 1975 and other source data. This information not field checked. Map edited 1978



CONTOUR INTERVAL 10 FEET  
NATIONAL GEODETIC VERTICAL DATUM OF 1929

THIS MAP COMPLIES WITH NATIONAL MAP ACCURACY STANDARDS  
FOR SALE BY U. S. GEOLOGICAL SURVEY, DENVER, COLORADO 80225, OR RESTON, VIRGINIA 22092  
A FOLDER DESCRIBING TOPOGRAPHIC MAPS AND SYMBOLS IS AVAILABLE ON REQUEST



ROAD CLASSIFICATION

HARD-SURFACE ALL WEATHER ROADS	DRY WEATHER ROADS
Heavy-duty  CLAYE LANE	Improved dirt
Medium-duty  CLAYE LANE	Unimproved dirt
Loose-surface, graded, or narrow hard-surface	
U. S. Route	State Route

KLUG RANCH, COLO.  
N4007.5-W10430/7.5  
1950  
PHOTOREVISED 1978  
DMA 5064 1/2 NE-SERIES V877