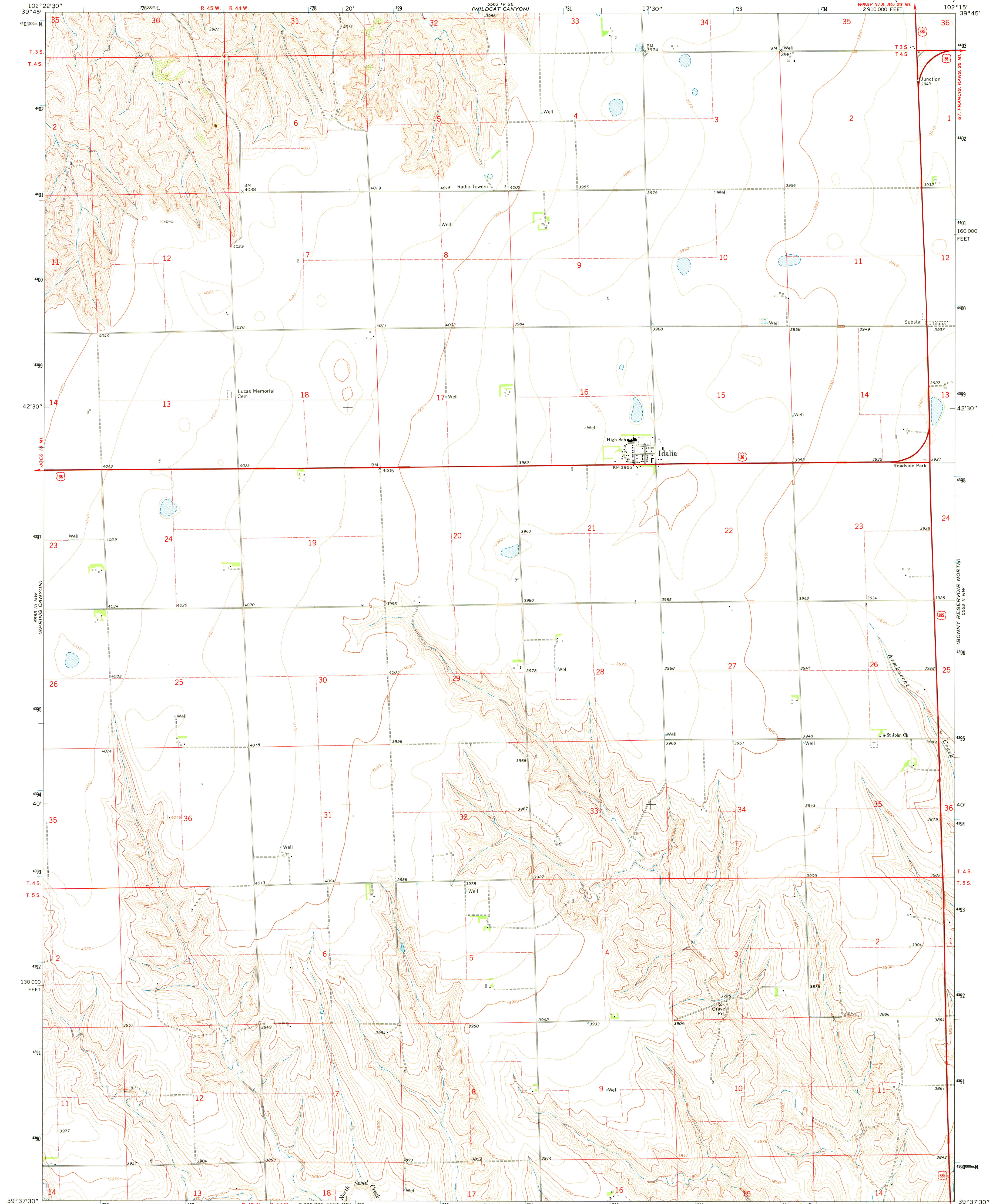
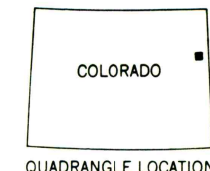
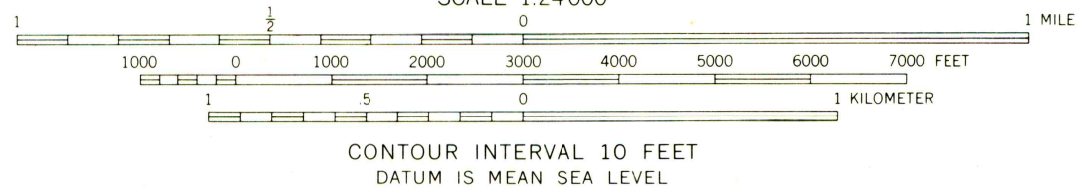
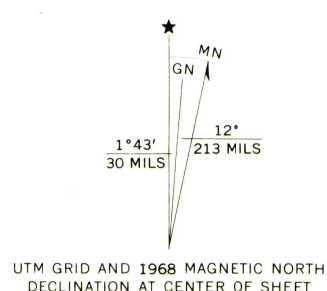


UNITED STATES  
DEPARTMENT OF THE INTERIOR  
GEOLOGICAL SURVEY

IDALIA QUADRANGLE  
COLORADO—YUMA CO.  
7.5 MINUTE SERIES (TOPOGRAPHIC)  
WRAY (U.S. 34) 23 MI.  
2 910 000 FEET



Mapped, edited, and published by the Geological Survey as part of the Department of the Interior program for the development of the Missouri River Basin Control by USGS and USC&GS  
Topography by photogrammetric methods from aerial photographs taken 1966. Field checked 1968  
Polyconic projection. 1927 North American datum 10,000-foot grid based on Colorado coordinate system, north zone  
1000-meter Universal Transverse Mercator grid ticks, zone 13, shown in blue  
Fine red dashed lines indicate selected fence lines



ROAD CLASSIFICATION  
Primary highway, all weather. Light-duty road, all weather, hard surface. Improved surface.  
Unimproved road, fair or dry weather.  
U. S. Route

THIS MAP COMPLIES WITH NATIONAL MAP ACCURACY STANDARDS  
FOR SALE BY U. S. GEOLOGICAL SURVEY, DENVER, COLORADO 80225, OR WASHINGTON, D. C. 20242  
A FOLDER DESCRIBING TOPOGRAPHIC MAPS AND SYMBOLS IS AVAILABLE ON REQUEST

IDALIA, COLO.  
N3937.5—W10215/7.5  
1968

AMS 5563 III NE—SERIES V877