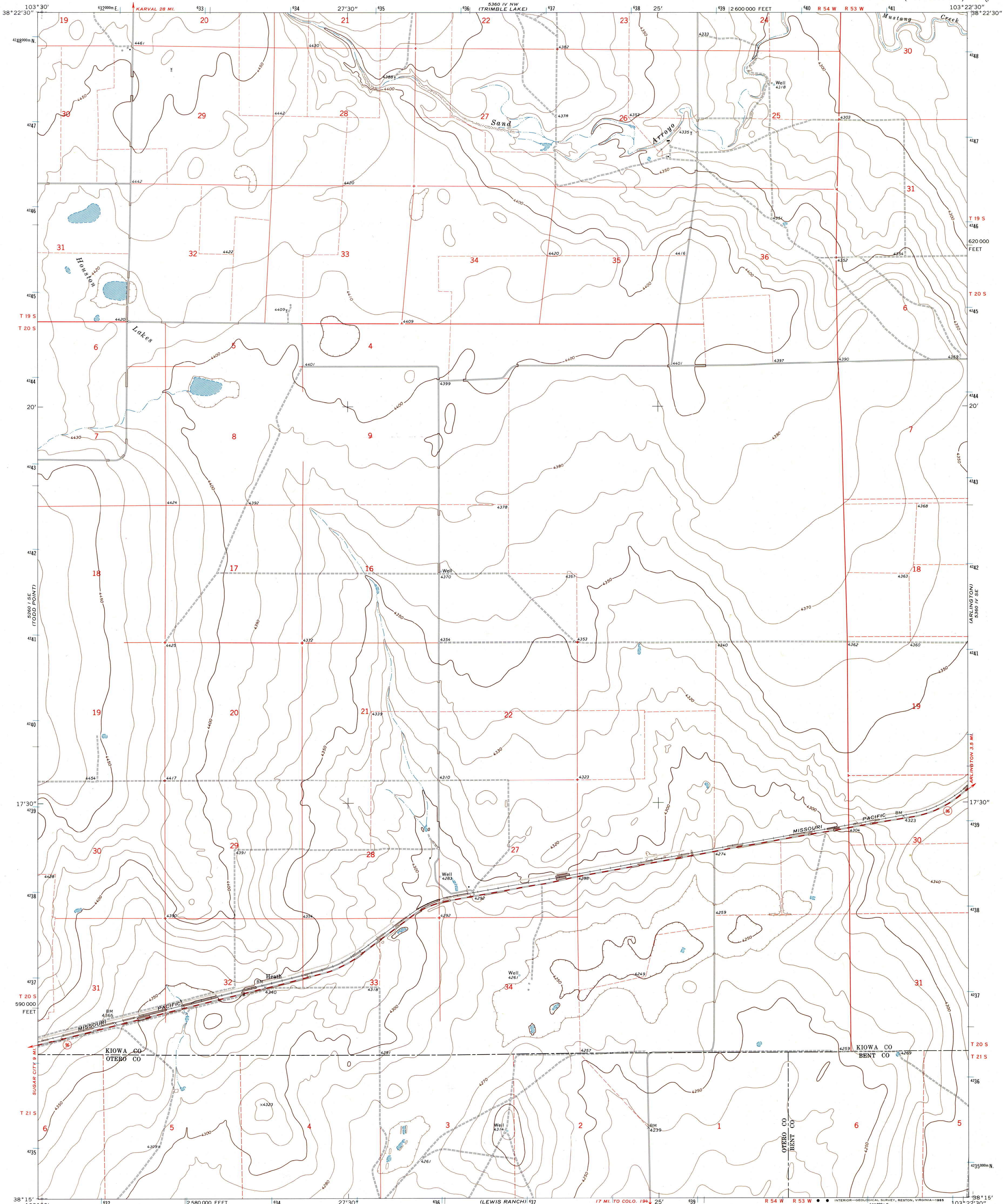


UNITED STATES
DEPARTMENT OF THE INTERIOR
GEOLOGICAL SURVEY

HOUSTON LAKES QUADRANGLE
COLORADO
7.5 MINUTE SERIES (TOPOGRAPHIC)



Mapped, edited, and published by the Geological Survey

Control by USGS and NOS/NOAA

Topography by photogrammetric methods from aerial photographs taken 1973. Field checked 1974. Map edited 1978

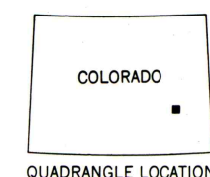
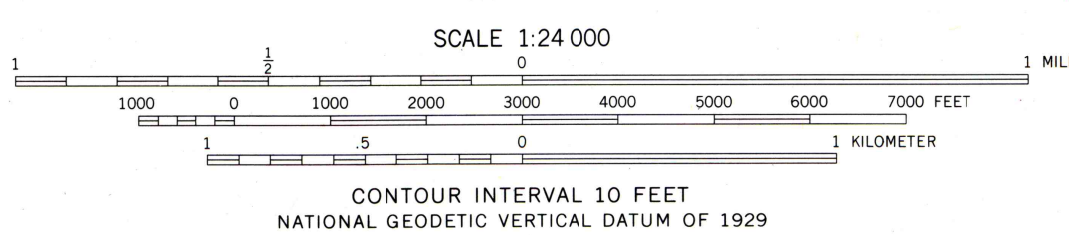
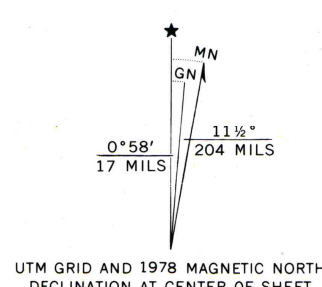
Projection and 10,000-foot grid ticks: Colorado coordinate system, south zone (Lambert conformal conic)

1000-meter Universal Transverse Mercator grid ticks, zone 13, shown in blue. 1927 North American Datum

Fine red dashed lines indicate selected fence lines

Land lines are omitted in areas of extensive tract surveys

To place on the predicted North American Datum 1983 move the projection lines 3 meters north and 44 meters east as shown by dashed corner ticks



ROAD CLASSIFICATION	
Primary highway, hard surface	Light-duty road, hard or improved surface
Secondary highway, hard surface	Unimproved road
Interstate Route	U.S. Route
	State Route

HOUSTON LAKES, COLO.
38103-C4-TF-024
1978

DMA 5360 IV SW-SERIES V877