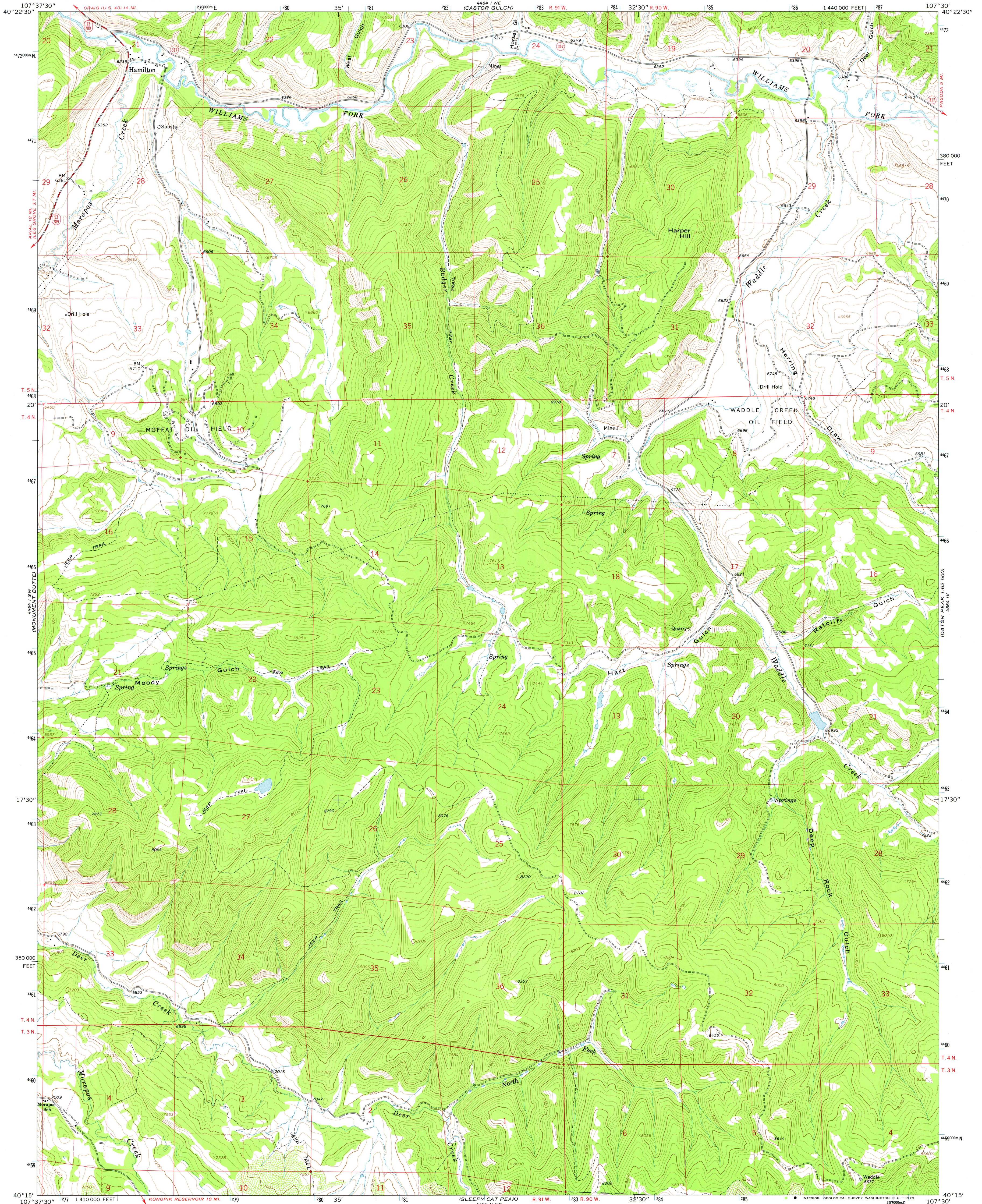
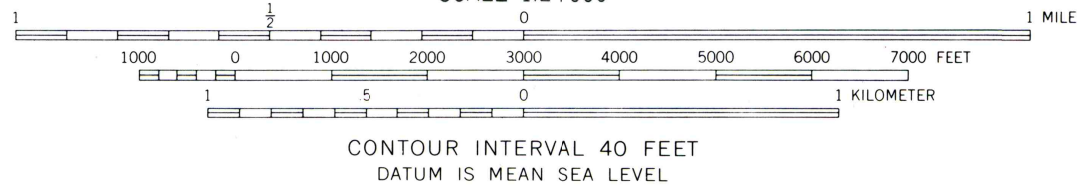
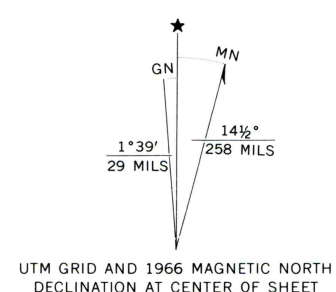


UNITED STATES
DEPARTMENT OF THE INTERIOR
GEOLOGICAL SURVEY

HAMILTON QUADRANGLE
COLORADO—MOFFAT CO.
7.5 MINUTE SERIES (TOPOGRAPHIC)
SE/4 MONUMENT BUTTE 15' QUADRANGLE



Mapped, edited, and published by the Geological Survey
Control by USGS and USC&GS
Topography by photogrammetric methods from aerial photographs taken 1962. Field checked 1966
Polyconic projection. 1927 North American datum
10,000-foot grid based on Colorado coordinate system, north zone
1000-meter Universal Transverse Mercator grid ticks, zone 13, shown in blue
Fine red dashed lines indicate selected fence lines



CONTOUR INTERVAL 40 FEET
DATUM IS MEAN SEA LEVEL



ROAD CLASSIFICATION
Medium-duty ——— Light-duty ———
Unimproved dirt - - - - - State Route

HAMILTON, COLO.
SE/4 MONUMENT BUTTE 15' QUADRANGLE
N4015—W10730/7.5

THIS MAP COMPLIES WITH NATIONAL MAP ACCURACY STANDARDS
FOR SALE BY U. S. GEOLOGICAL SURVEY, DENVER, COLORADO 80225, OR WASHINGTON, D. C. 20242
A FOLDER DESCRIBING TOPOGRAPHIC MAPS AND SYMBOLS IS AVAILABLE ON REQUEST

1966
AMS 4464 1 SE—SERIES V877