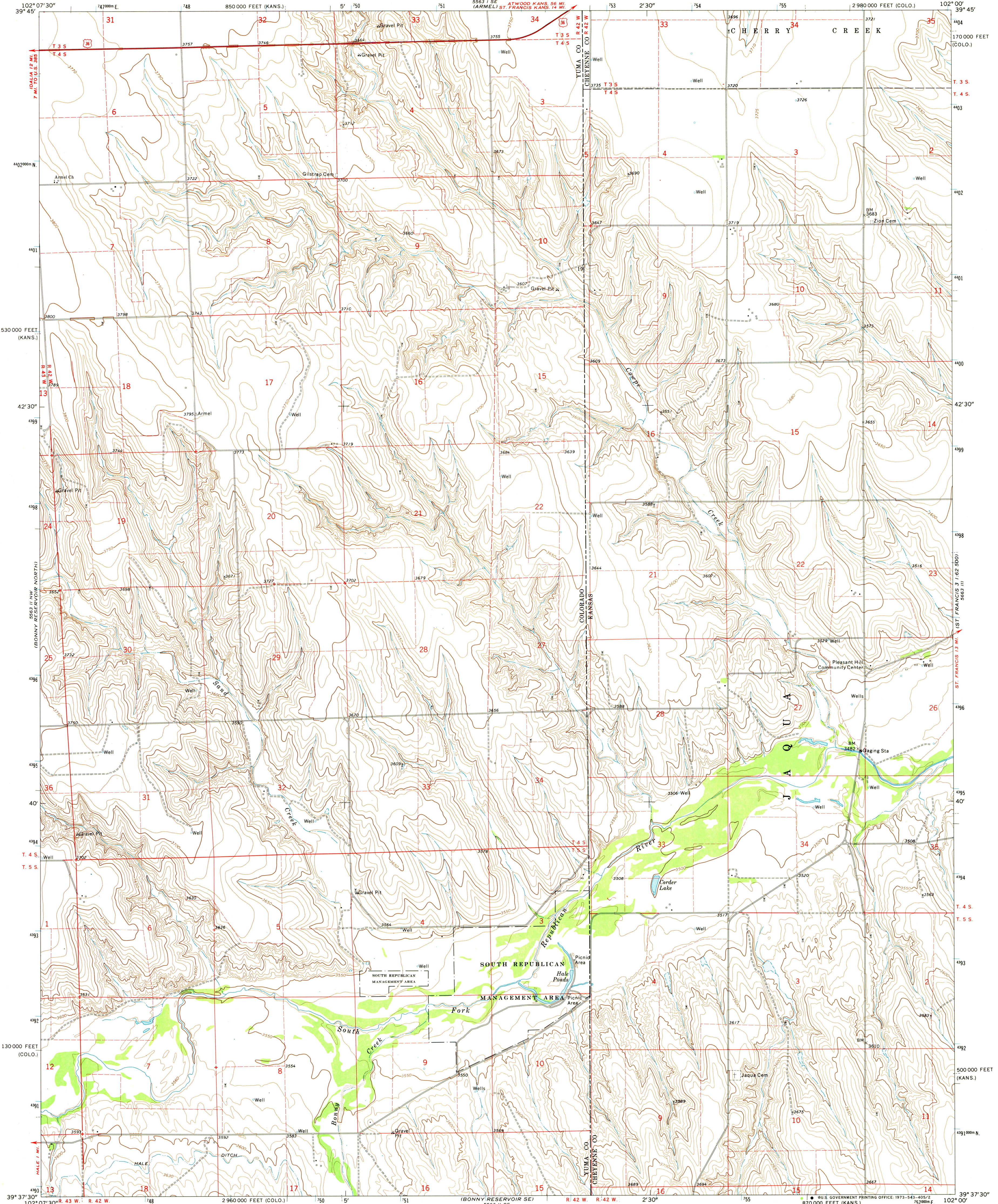
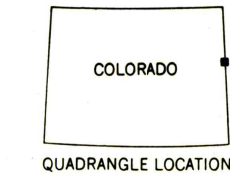
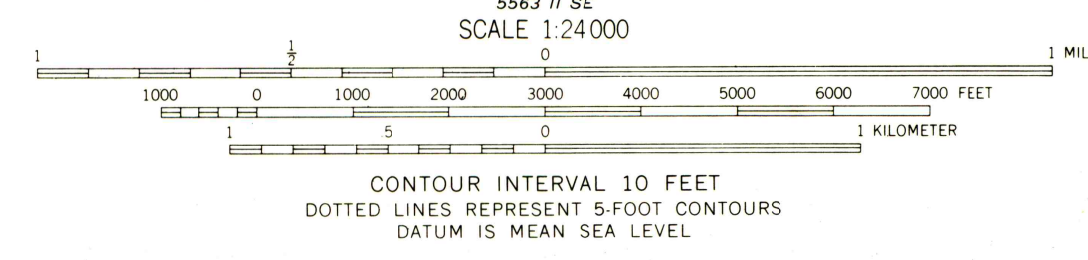
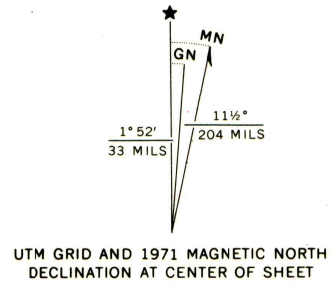


UNITED STATES  
DEPARTMENT OF THE INTERIOR  
GEOLOGICAL SURVEY

HALE PONDS QUADRANGLE  
COLORADO-KANSAS  
7.5 MINUTE SERIES (TOPOGRAPHIC)  
NE 1/4 BONNY RESERVOIR 15' QUADRANGLE



Mapped, edited, and published by the Geological Survey as part of the Department of the Interior program for the development of the Missouri River Basin Control by USGS and USC&GS  
Topography by photogrammetric methods from aerial photographs taken 1970. Field checked 1971  
Polyconic projection. 1927 North American datum 10,000-foot grids based on Colorado coordinate system, north zone and Kansas coordinate system, north zone 1000-meter Universal Transverse Mercator grid ticks, zone 13, shown in blue  
Fine red dashed lines indicate selected fence lines  
R. 42 W., Sixth Principal Meridian is duplicated in Colorado and Kansas



ROAD CLASSIFICATION

Primary highway, hard surface	Light-duty road, hard or improved surface
Secondary highway, hard surface	Unimproved road
Interstate Route	U. S. Route
	State Route

HALE PONDS, COLO.-KANS.

NE 1/4 BONNY RESERVOIR 15' QUADRANGLE  
N 3937.5-W10200/7.5

1971

AMS 5563 II NE-SERIES V877

THIS MAP COMPLIES WITH NATIONAL MAP ACCURACY STANDARDS  
FOR SALE BY U. S. GEOLOGICAL SURVEY, DENVER, COLORADO 80225 OR WASHINGTON, D. C. 20242  
A FOLDER DESCRIBING TOPOGRAPHIC MAPS AND SYMBOLS IS AVAILABLE ON REQUEST