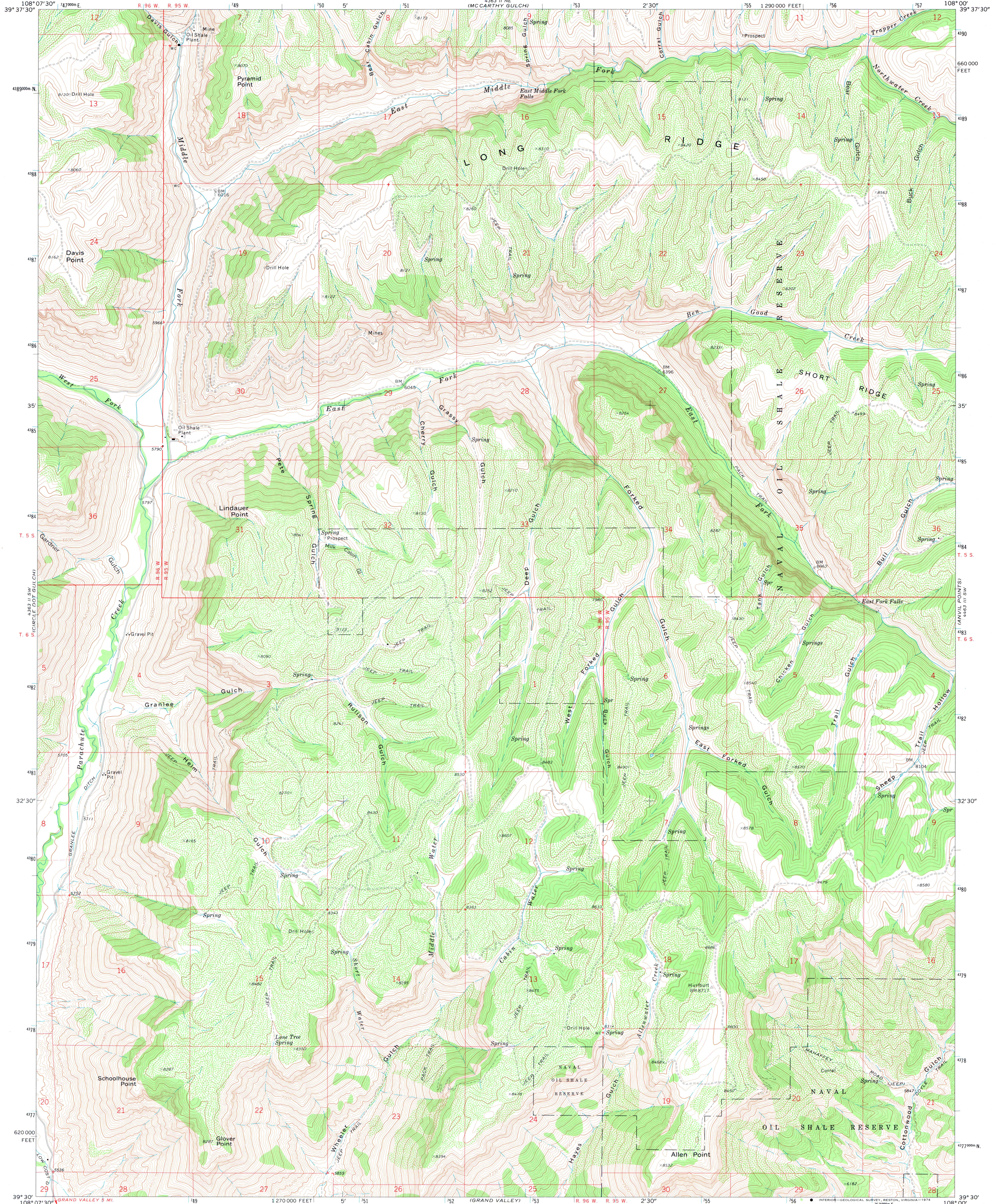
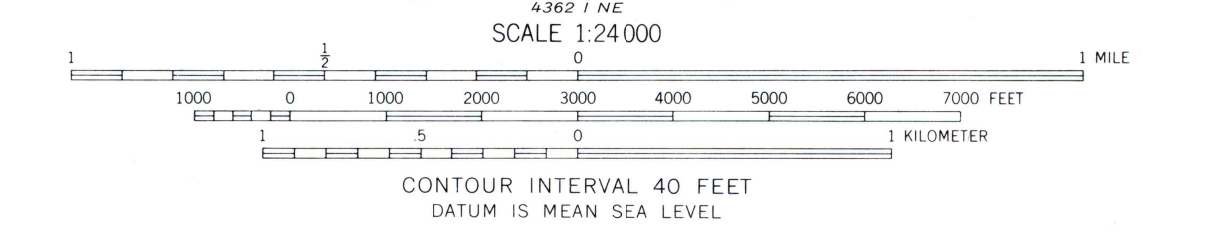
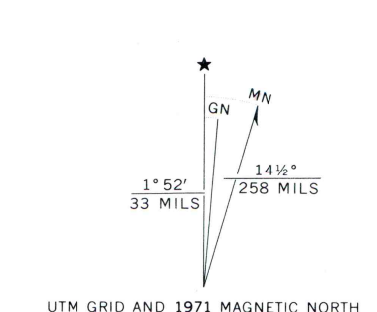


UNITED STATES
DEPARTMENT OF THE INTERIOR
GEOLOGICAL SURVEY

FORKED GULCH QUADRANGLE
COLORADO—GARFIELD CO.
7.5 MINUTE SERIES (TOPOGRAPHIC)
SE 1/4 PARACHUTE CREEK 15' QUADRANGLE



Mapped, edited, and published by the Geological Survey
Control by USGS and USC&GS
Topography by photogrammetric methods from aerial photographs taken 1970. Field checked 1971
Projection and 10,000-foot grid ticks: Colorado coordinate system, central zone (Lambert conformal conic)
1000-meter Universal Transverse Mercator grid ticks, zone 12, shown in blue. 1927 North American datum
Fine red dashed lines indicate selected fence lines



ROAD CLASSIFICATION
 Primary highway, hard surface ————
 Secondary highway, hard surface ————
 Interstate Route ————
 U. S. Route ————
 State Route ————
 Light-duty road, hard or improved surface ————
 Unimproved road ————

THIS MAP COMPLIES WITH NATIONAL MAP ACCURACY STANDARDS
 FOR SALE BY U. S. GEOLOGICAL SURVEY, DENVER, COLORADO 80225, OR RESTON, VIRGINIA 22092
 A FOLDER DESCRIBING TOPOGRAPHIC MAPS AND SYMBOLS IS AVAILABLE ON REQUEST

FORKED GULCH, COLO.
 SE 1/4 PARACHUTE CREEK 15' QUADRANGLE
 N3930—W10800/7.5

1971

AMS 4363 II SE—SERIES V877