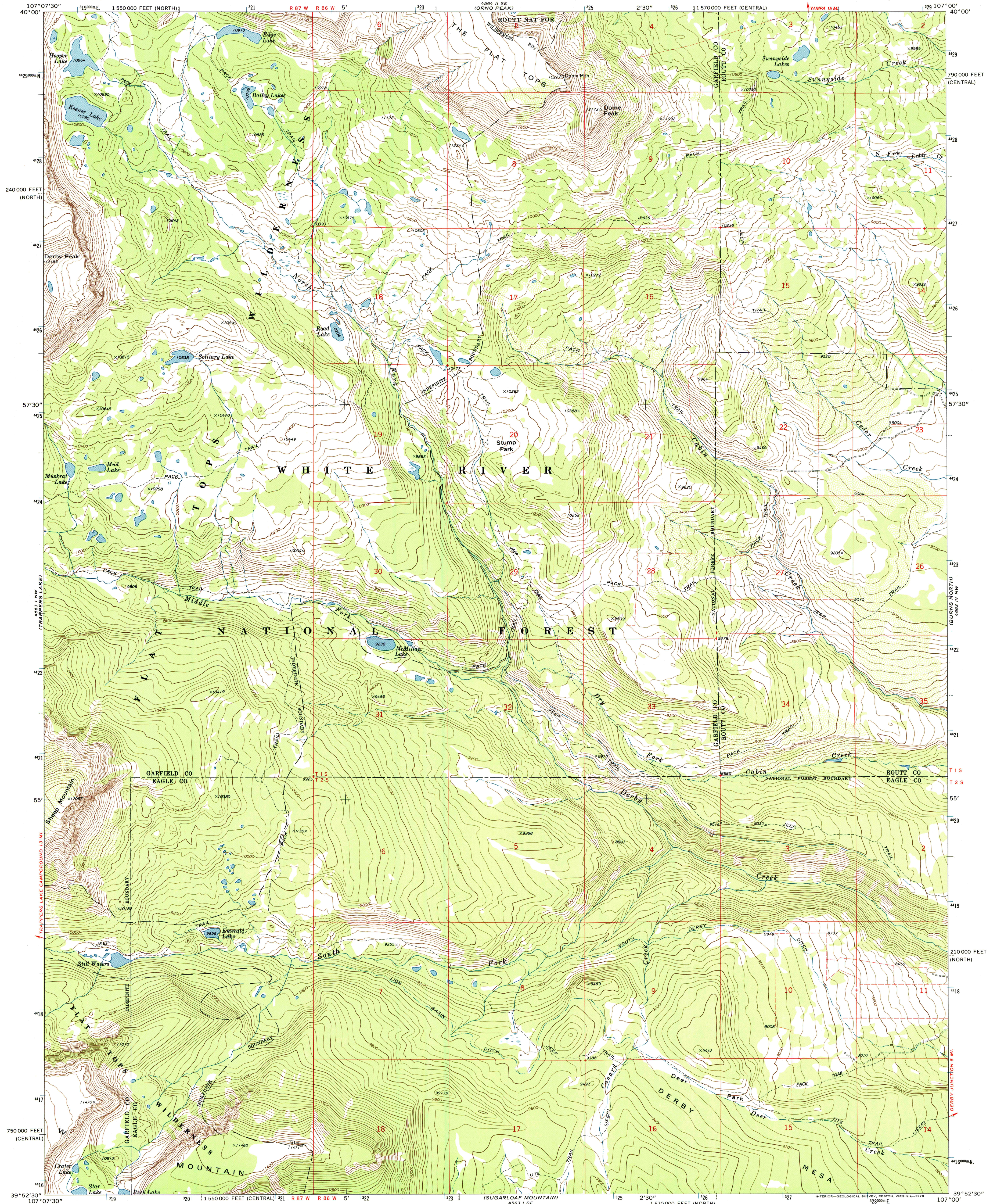




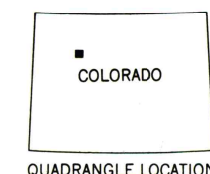
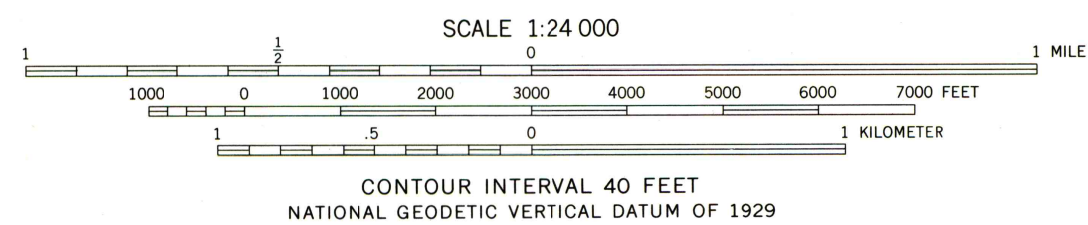
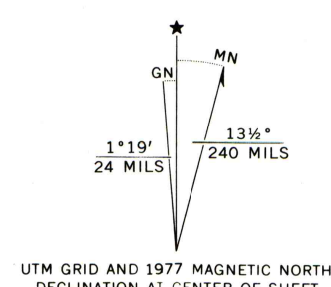
U.S. DEPARTMENT OF THE INTERIOR  
U.S. GEOLOGICAL SURVEY

DOME PEAK QUADRANGLE  
COLORADO  
7.5 MINUTE SERIES (TOPOGRAPHIC)



Mapped, edited, and published by the Geological Survey

Control by USGS, NOS/NOAA, and U. S. Forest Service  
Topography by photogrammetric methods from aerial photographs taken 1964-65. Field checked 1974. Map edited 1977.  
Projection: Colorado coordinate system, central zone (Lambert conformal conic)  
10,000-foot grid ticks based on Colorado coordinate system, central and north zones  
1000-meter Universal Transverse Mercator grid ticks, zone 13, shown in blue. 1927 North American datum  
Fine red dashed lines indicate selected fence lines  
Where omitted, land lines have not been established



ROAD CLASSIFICATION	
Primary highway, hard surface	Light-duty road, hard or improved surface
Secondary highway, hard surface	Unimproved road
Interstate Route	U. S. Route
	State Route

DOME PEAK, COLO.  
N3952.5—W10700/7.5

1977  
AMS 4563 1 NE—SERIES V877

THIS MAP COMPLIES WITH NATIONAL MAP ACCURACY STANDARDS  
FOR SALE BY U.S. GEOLOGICAL SURVEY, P.O. BOX 25286, DENVER, COLORADO 80225  
A FOLDER DESCRIBING TOPOGRAPHIC MAPS AND SYMBOLS IS AVAILABLE ON REQUEST

