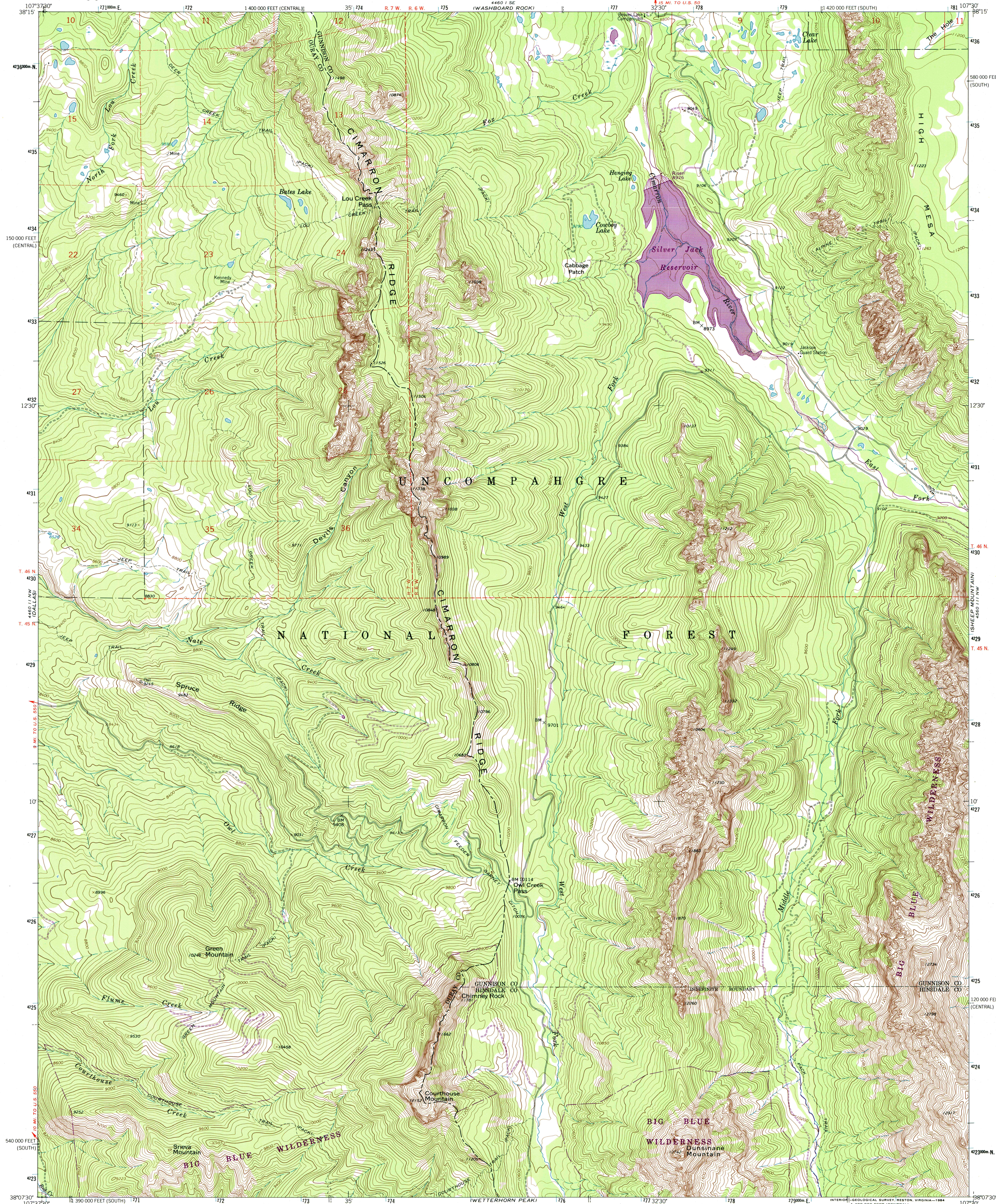




U.S. DEPARTMENT OF THE INTERIOR
U.S. GEOLOGICAL SURVEY

COURTHOUSE MOUNTAIN QUADRANGLE
COLORADO
7.5 MINUTE SERIES (TOPOGRAPHIC)



Mapped, edited, and published by the Geological Survey

Control by USGS and NOS/NOAA

Topography by photogrammetric methods from aerial photographs taken 1962. Field checked 1963

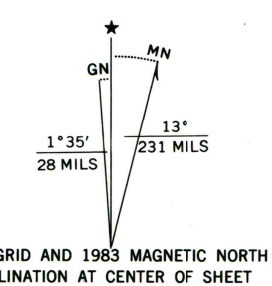
Polyconic projection. 1927 North American Datum

10,000-foot grids based on Colorado coordinate system, south and central zones

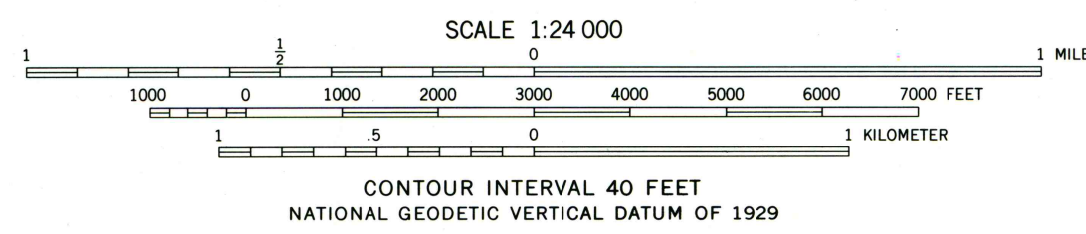
1000-meter Universal Transverse Mercator grid ticks, zone 13, shown in blue

Where omitted, land lines have not been established or are not shown because of insufficient data

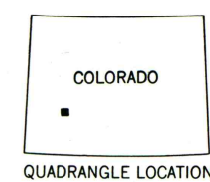
To place on the predicted North American Datum 1983 move the projection lines 4 meters north and 55 meters east as shown by dashed corner ticks



There may be private inholdings within the boundaries of the National or State reservations shown on this map



CONTOUR INTERVAL 40 FEET
NATIONAL GEODETIC VERTICAL DATUM OF 1929



THIS MAP COMPLIES WITH NATIONAL MAP ACCURACY STANDARDS
FOR SALE BY U.S. GEOLOGICAL SURVEY, P.O. BOX 25286, DENVER, COLORADO 80225
A FOLDER DESCRIBING TOPOGRAPHIC MAPS AND SYMBOLS IS AVAILABLE ON REQUEST

Revisions shown in purple and woodland compiled from aerial photographs taken 1978 and other source data
This information not field checked. Map edited 1983

COURTHOUSE MOUNTAIN, COLO.
38107-B5-TF-024

1963
PHOTOREVISED 1983
DMA 4460 11 NE-SERIES V877

