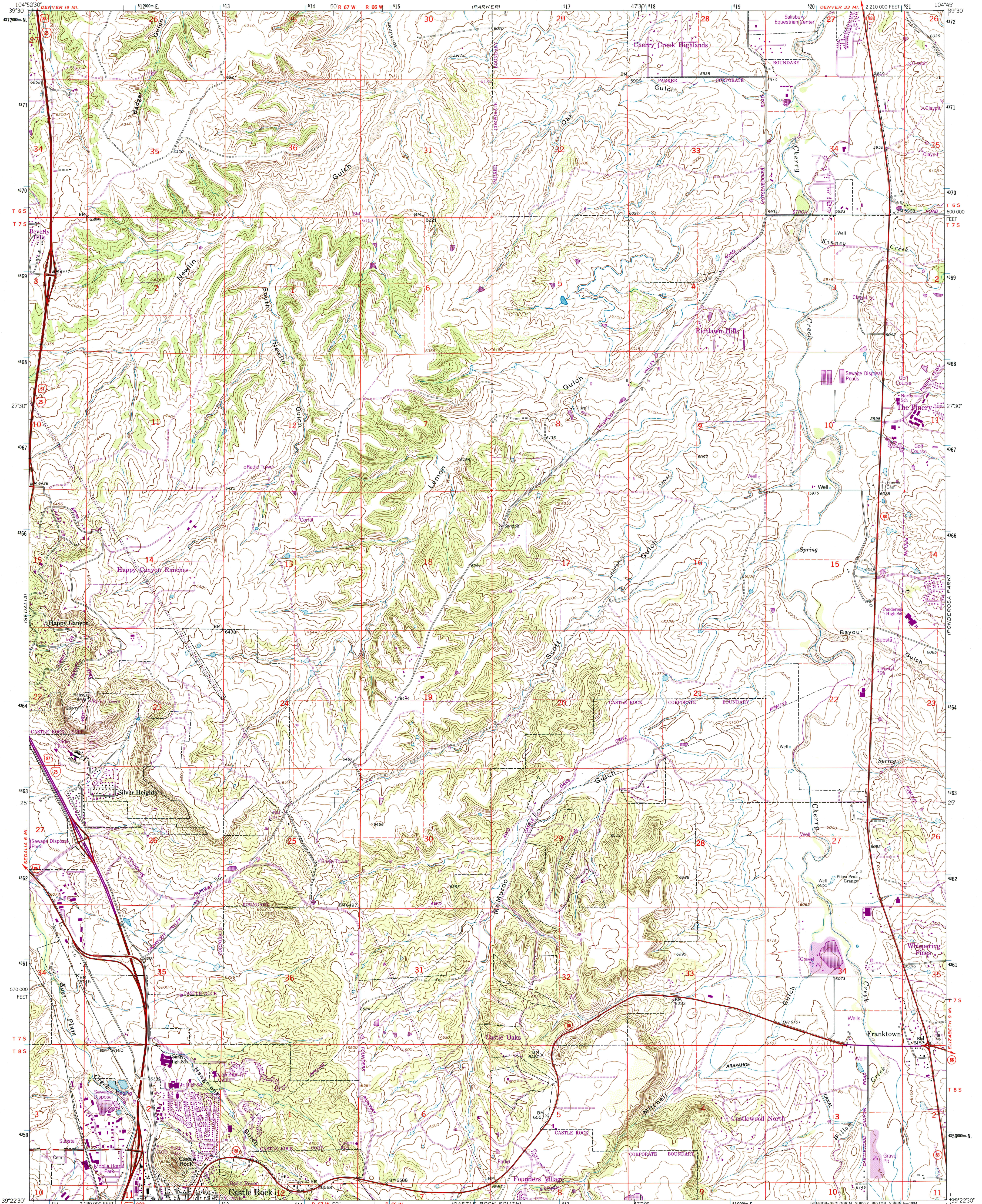


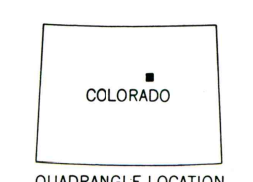
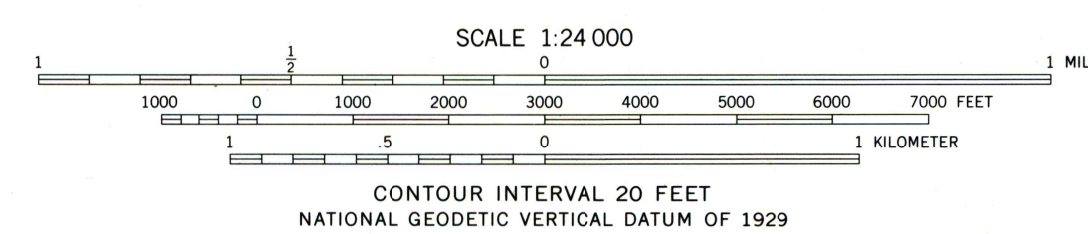
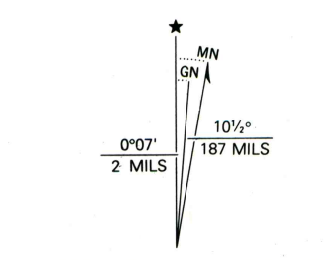


U.S. DEPARTMENT OF THE INTERIOR
U.S. GEOLOGICAL SURVEY

CASTLE ROCK NORTH QUADRANGLE
COLORADO-DOUGLAS CO.
7.5 MINUTE SERIES (TOPOGRAPHIC)



Produced by the United States Geological Survey in cooperation with the Inter-County Regional Planning Commission
Control by USGS and NOS/NOAA
Compiled from aerial photographs taken 1964. Revisions shown in purple compiled from aerial photographs taken 1988 and other sources and have been field checked. Map edited 1994. Conflicts may exist between some updated features and previously mapped contours.
North American Datum of 1927 (NAD 27). Projection and 10,000-foot ticks: Colorado Coordinate System, central zone (Lambert Conformal Conic)
Blue 1000-meter Universal Transverse Mercator ticks, zone 13
North American Datum of 1983 (NAD 83) is shown by dashed corner ticks. The values of the shift between NAD 27 and NAD 83 for 7.5-minute intersections are obtainable from National Geodetic Survey NADCON software



ROAD CLASSIFICATION

Heavy-duty	Light-duty
Medium-duty	Unimproved dirt
Interstate Route	U.S. Route
	State Route

THIS MAP COMPLIES WITH NATIONAL MAP ACCURACY STANDARDS
FOR SALE BY U.S. GEOLOGICAL SURVEY, P.O. BOX 25286, DENVER, COLORADO 80225
A FOLDER DESCRIBING TOPOGRAPHIC MAPS AND SYMBOLS IS AVAILABLE ON REQUEST

CASTLE ROCK NORTH, COLO.
39104-D7-TF-024

1965
REVISED 1994
DMA 5062 IV-NE-SERIES V877

