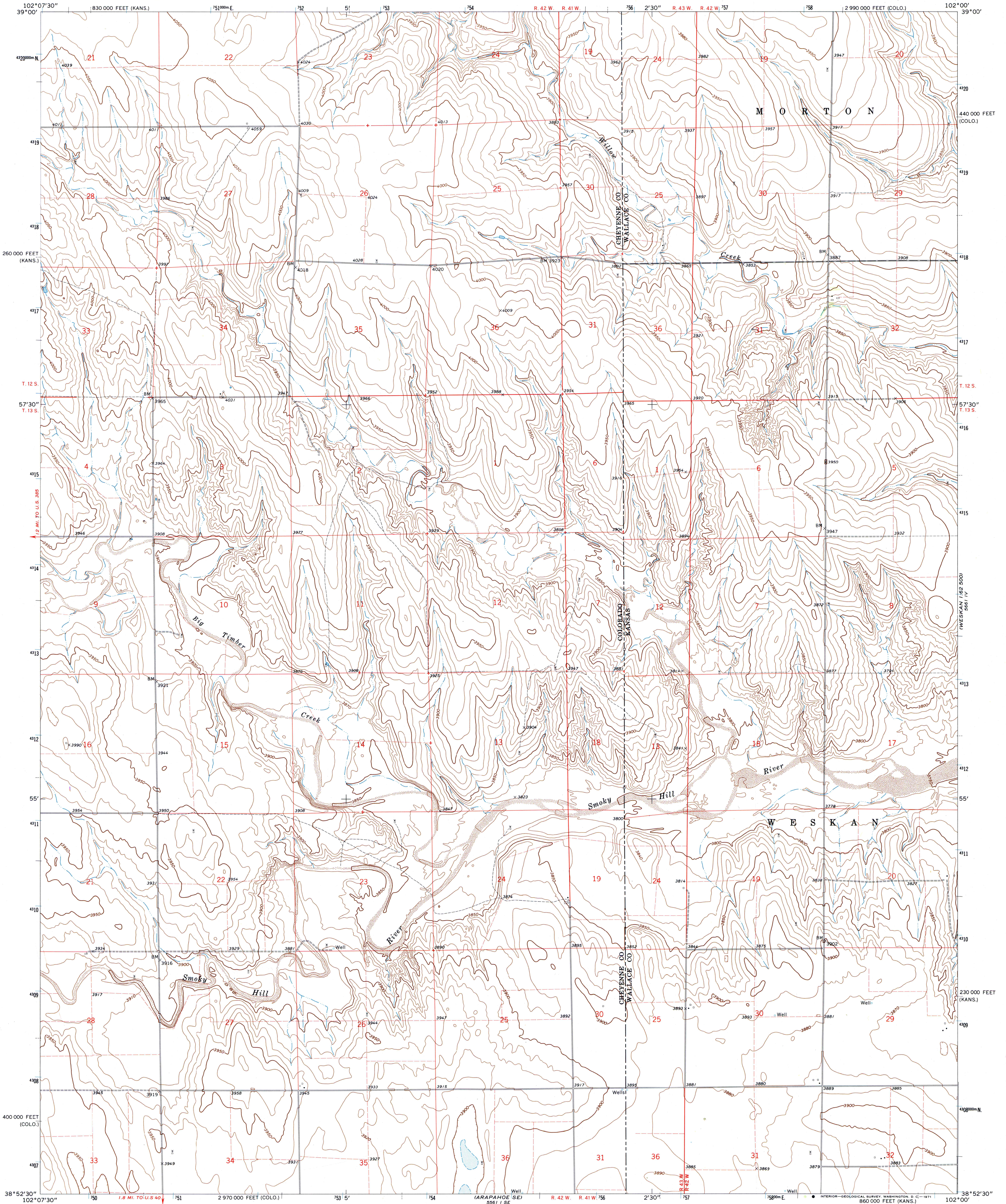


8667 1/1
HORSESHOE
1:62,500
DRAWN



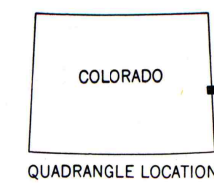
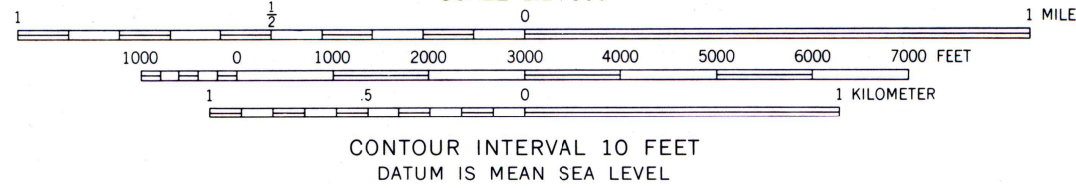
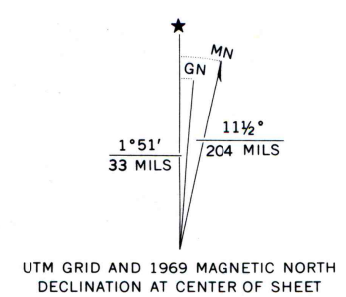
Mapped, edited, and published by the Geological Survey in cooperation with State of Kansas agencies

Control by USGS and USC&GS

Topography by photogrammetric methods from aerial photographs taken 1968. Field checked 1969

Polyconic projection. 1927 North American datum 10,000-foot grid based on Colorado coordinate system, central zone, and Kansas coordinate system, north zone 1000-meter Universal Transverse Mercator grid ticks, zone 13, shown in blue

Fine red dashed lines indicate selected fence and field lines where generally visible on aerial photographs. This information is unchecked



ROAD CLASSIFICATION
Light-duty road, all weather, improved surface
Unimproved road, fair or dry weather

THIS MAP COMPLIES WITH NATIONAL MAP ACCURACY STANDARDS
FOR SALE BY U. S. GEOLOGICAL SURVEY, DENVER, COLORADO 80225, OR RESTON, VIRGINIA 22092
AND BY THE STATE GEOLOGICAL SURVEY, LAWRENCE, KANSAS 66044
A FOLDER DESCRIBING TOPOGRAPHIC MAPS AND SYMBOLS IS AVAILABLE ON REQUEST

ARAPAHOE NE, COLO.-KANS.
N3852.5-W10200/7.5

1969

AMS 5561 1 NE-SERIES V877

WESKAN 1:62,500
SER. 13