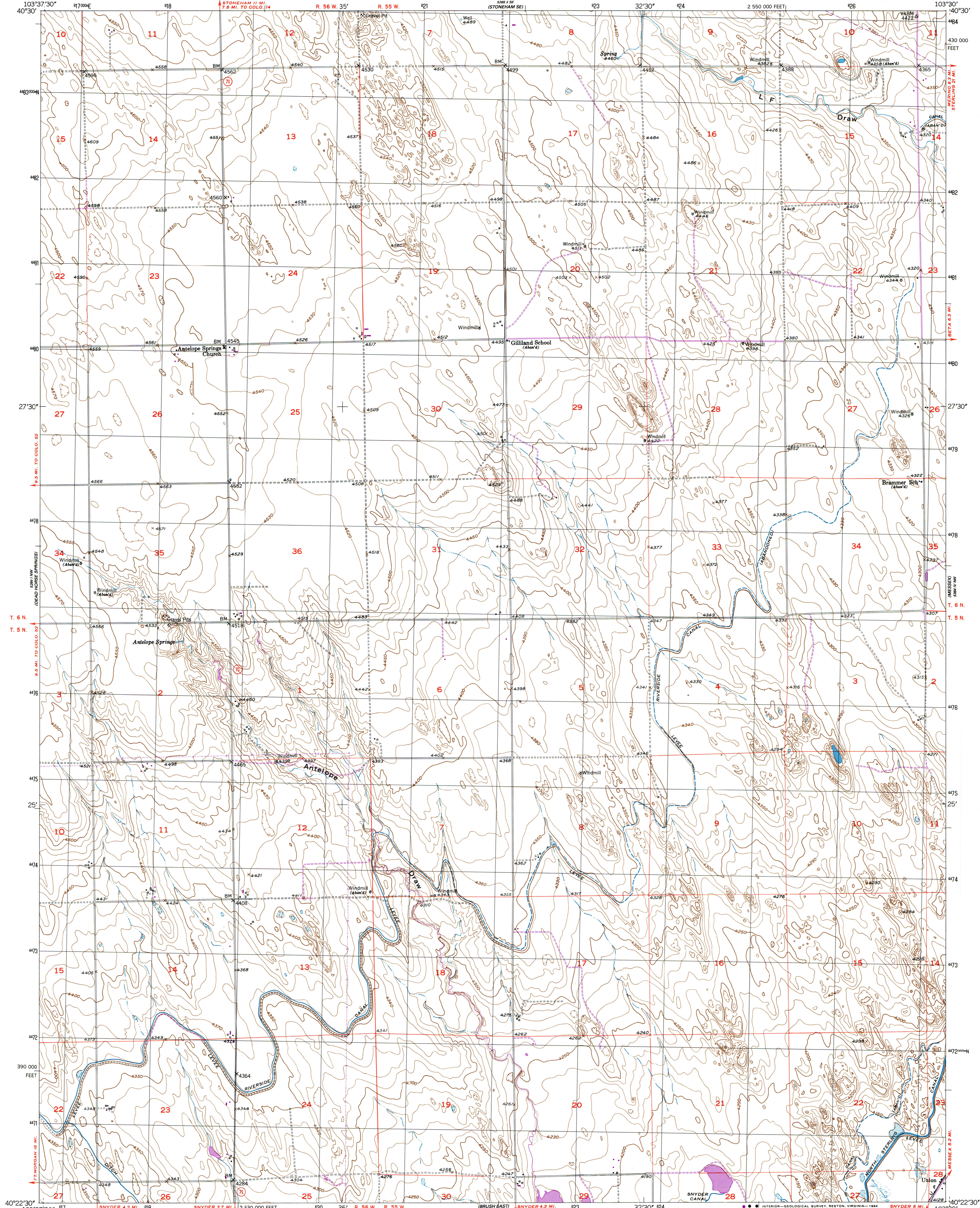
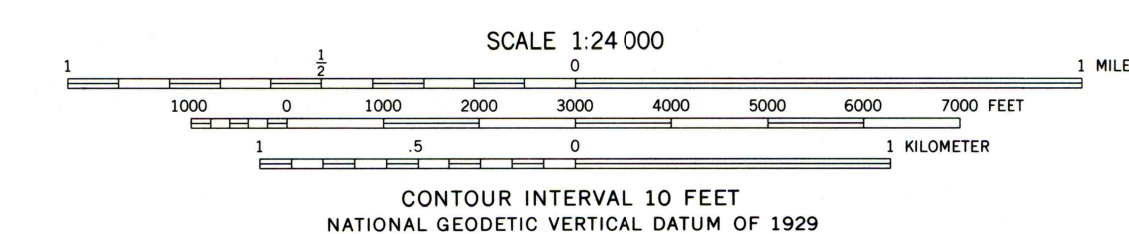
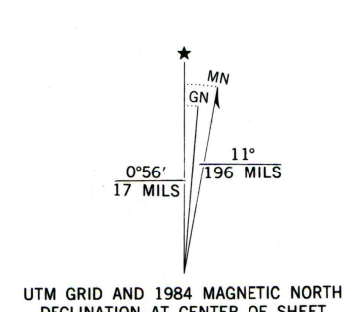


UNITED STATES
DEPARTMENT OF THE INTERIOR
GEOLOGICAL SURVEY

ANTELOPE SPRINGS QUADRANGLE
COLORADO-MORGAN CO.
7.5 MINUTE SERIES (TOPOGRAPHIC)



Mapped, edited, and published by the Geological Survey as part of the Department of the Interior program for the development of the Missouri River Basin. Control by USGS and NOS/NOAA. Topography by photogrammetric methods from aerial photographs taken 1948 and planetable surveys 1951. Polyconic projection. 10,000-foot grid ticks based on Colorado coordinate system, north zone. 1000-meter Universal Transverse Mercator grid, zone 13. 1927 North American Datum. To place on the predicted North American Datum 1983 move the projection lines 5 meters north and 44 meters east as shown by dashed corner ticks. Revisions shown in purple and woodland compiled from aerial photographs taken 1982 and other sources. This information not field checked. Map edited 1984.



ROAD CLASSIFICATION

Heavy-duty	4 LANE 6 LANE	Light duty
Medium-duty	4 LANE 6 LANE	Unimproved dirt
U.S. Route		State Route

ANTELOPE SPRINGS, COLO.
40103-05-TF-024

1951
PHOTOREVISED 1984
DMA 5264 1 NE - SERIES V877

THIS MAP COMPLIES WITH NATIONAL MAP ACCURACY STANDARDS. FOR SALE BY U. S. GEOLOGICAL SURVEY, DENVER, COLORADO 80225, OR RESTON, VIRGINIA 22092. A FOLDER DESCRIBING TOPOGRAPHIC MAPS AND SYMBOLS IS AVAILABLE ON REQUEST.